

Plat of Survey No. 142 ~~277~~ Claim No.

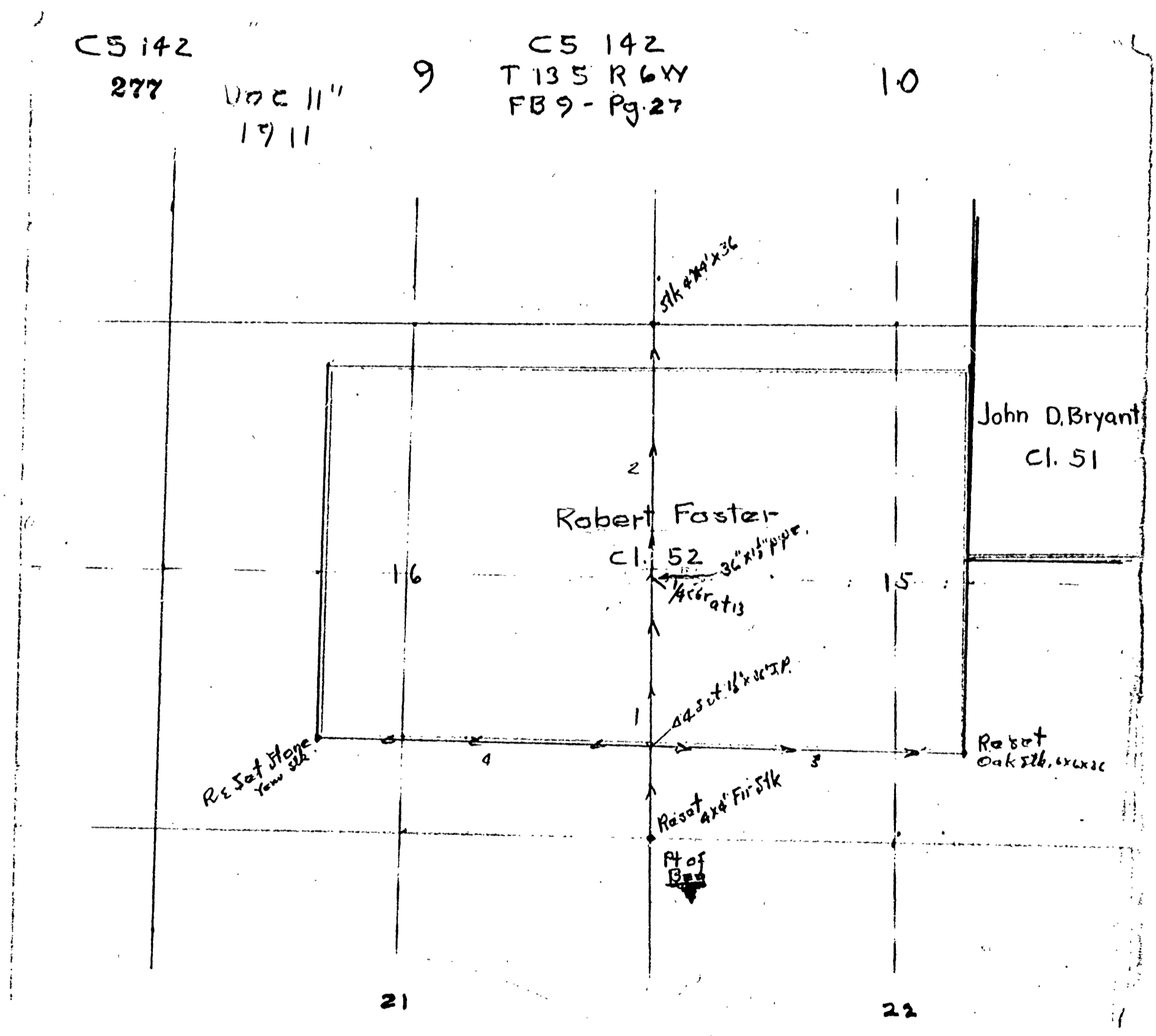
MADE FOR *J. G. Whitman*

Section Township 13 South Range 6 West

Scale: Chains to the Inch.

Field Notes recorded at page . Vol. , Record of Surveys.

*Field book 9 - page 27*









29

40

41

Rest SE cor Filler Cl. Dak strata 6x6x36"

Back to Sta. #46

Thru 589-45 W

42

43

44

45

46

47

48

49

50

51

52

53

54

55

Set Stone

Set

5.372 ✓

+12- 2.818 ✓

1.286 ✓, 512 S

5.926

1.198

3.511

2.297

5.300

.245

2.543 .034 N

2.209

2.362 .036 N

4.742

1.855

3.105 .022 S

5.305

.139

1.200

4.917

2.424

at Sta. # 16

1.067

W.098

at 47 Sta #

1.03

N.032

12 2.813

1879 60719

25312 11574

1964 128

2222 11791

27012

7-20 2543

2543 2789

2888 16695

2282 14845

25220 18911

6-20 1200

9398 317

10800 44253

10800 44292

11926 44392

51499 18300

15492

28503

27535

43228

34259

11726

52118

346

516-30 F 1286

57893

3858 11574

11574 1108

5120 58857

2-30 530

5305 5305

44199 74899

27945 47745

27945 47745

30783 52967

17 13187

2424 13254

3609 33209

21816 92778

1214 5301

1142 397

28180 098476

1405 10005

5001 1099

5002 103

935577 19902

570 55300

2574 59206

27535 99945

034 N 06061

W 41 3522

36810 4362

2522 1362

756 1194

151 5046

17 32700

03446 21046

1022371 310

03446 49036

6-40 42899

5926 42899

53334 53334

53334 53334

11779 11779

57499 57499

58860 58860

1198 1198

5517 5517

2300 2300

245 245

25 25

25 25

25 25

25 25

25 25

25 25

25 25

25 25

25 25

25 25

25 25

25 25

25 25

25 25

25 25

25 25

25 25

25 25

25 25

25 25

25 25

30

56

+12-40 1.270

57

+10-50 2.808

58

+8- 2.193

Rest S.W. cor. Foster 66 52

Set Iron Stake 4 X X 40

Fin 16" N 66-35 E

Sub. cor.

Set Stake Iron pipe 36" x 1 1/2" at Sta # 4

Fin 30" N 76-20 W

Fin 24" N 16-20 W +3-40

Set Pipe iron 36" x 1 1/2"

Fin 38" N 56-40 E

Fin 18" S 65-20 E 4 1/2 X

Thence N 26' W

59

60

61

62

63

64

Set pipe 36" x 1 1/2"

Fin 18" N 86-20 W

Fin 30" N 14-55 W

12-40  
1.279  
1.2389

10-50  
2.808  
2.5272

8  
2.193  
2.1715

5  
106.476  
106.731

N  
0.22  
4.76

0.36  
0.34  
0.39

0.16  
0.12  
0.13

0.0212  
0.058  
0.054

106.476  
130.488  
140.040

0.67  
0.50  
0.54

1.3174  
92.218  
52.665

0.97882  
1.357  
1.678

0.2051  
4.20  
5.297

4.1799  
4.7673  
4.767

0.70  
5.2817  
4.1514

1.034  
4.234  
4.089

58.106  
33.87  
2.1

4.1514  
1.46  
1.22

1.76  
2.653  
2.29  
0.16

13-40  
1.279  
1.2389

10-50  
2.808  
2.5272

8  
2.193  
2.1715

5  
106.476  
106.731

N  
0.22  
4.76

0.36  
0.34  
0.39

0.16  
0.12  
0.13

0.0212  
0.058  
0.054

106.476  
130.488  
140.040

0.67  
0.50  
0.54

1.3174  
92.218  
52.665

0.97882  
1.357  
1.678

0.2051  
4.20  
5.297

4.1799  
4.7673  
4.767

0.70  
5.2817  
4.1514

1.034  
4.234  
4.089

58.106  
33.87  
2.1

4.1514  
1.46  
1.22

1.76  
2.653  
2.29  
0.16

13-40  
1.279  
1.2389

10-50  
2.808  
2.5272

8  
2.193  
2.1715

5  
106.476  
106.731

N  
0.22  
4.76

0.36  
0.34  
0.39

0.16  
0.12  
0.13

0.0212  
0.058  
0.054

106.476  
130.488  
140.040

0.67  
0.50  
0.54

1.3174  
92.218  
52.665

0.97882  
1.357  
1.678

0.2051  
4.20  
5.297

4.1799  
4.7673  
4.767

0.70  
5.2817  
4.1514

1.034  
4.234  
4.089

58.106  
33.87  
2.1

4.1514  
1.46  
1.22

1.76  
2.653  
2.29  
0.16

12-40  
1.279  
1.2389

10-50  
2.808  
2.5272

8  
2.193  
2.1715

5  
106.476  
106.731

N  
0.22  
4.76

0.36  
0.34  
0.39

0.16  
0.12  
0.13

0.0212  
0.058  
0.054

106.476  
130.488  
140.040

0.67  
0.50  
0.54

1.3174  
92.218  
52.665

0.97882  
1.357  
1.678

0.2051  
4.20  
5.297

4.1799  
4.7673  
4.767

0.70  
5.2817  
4.1514

1.034  
4.234  
4.089

58.106  
33.87  
2.1

4.1514  
1.46  
1.22

1.76  
2.653  
2.29  
0.16

12-40  
1.279  
1.2389

10-50  
2.808  
2.5272

8  
2.193  
2.1715

5  
106.476  
106.731

N  
0.22  
4.76

0.36  
0.34  
0.39

0.16  
0.12  
0.13

0.0212  
0.058  
0.054

106.476  
130.488  
140.040

0.67  
0.50  
0.54

1.3174  
92.218  
52.665

0.97882  
1.357  
1.678

0.2051  
4.20  
5.297

4.1799  
4.7673  
4.767

0.70  
5.2817  
4.1514

1.034  
4.234  
4.089

58.106  
33.87  
2.1

4.1514  
1.46  
1.22

1.76  
2.653  
2.29  
0.16

31

Thence 589.52 W

65

66

67

Set pipe 26" x 1/2" at Sta # 14

Fin 18" N 37-35 E

Fin 34" S 73-10 E

-5-20 2.190

-6-30 4.601

+5 - 1.565

-10-30 1.760 +.004

Sta # 14 W. ~~327~~ 327

1.054

1.340

4.59

2.190
4.601
1.565
1.760
10,116
10.0

