

C.S. 2826

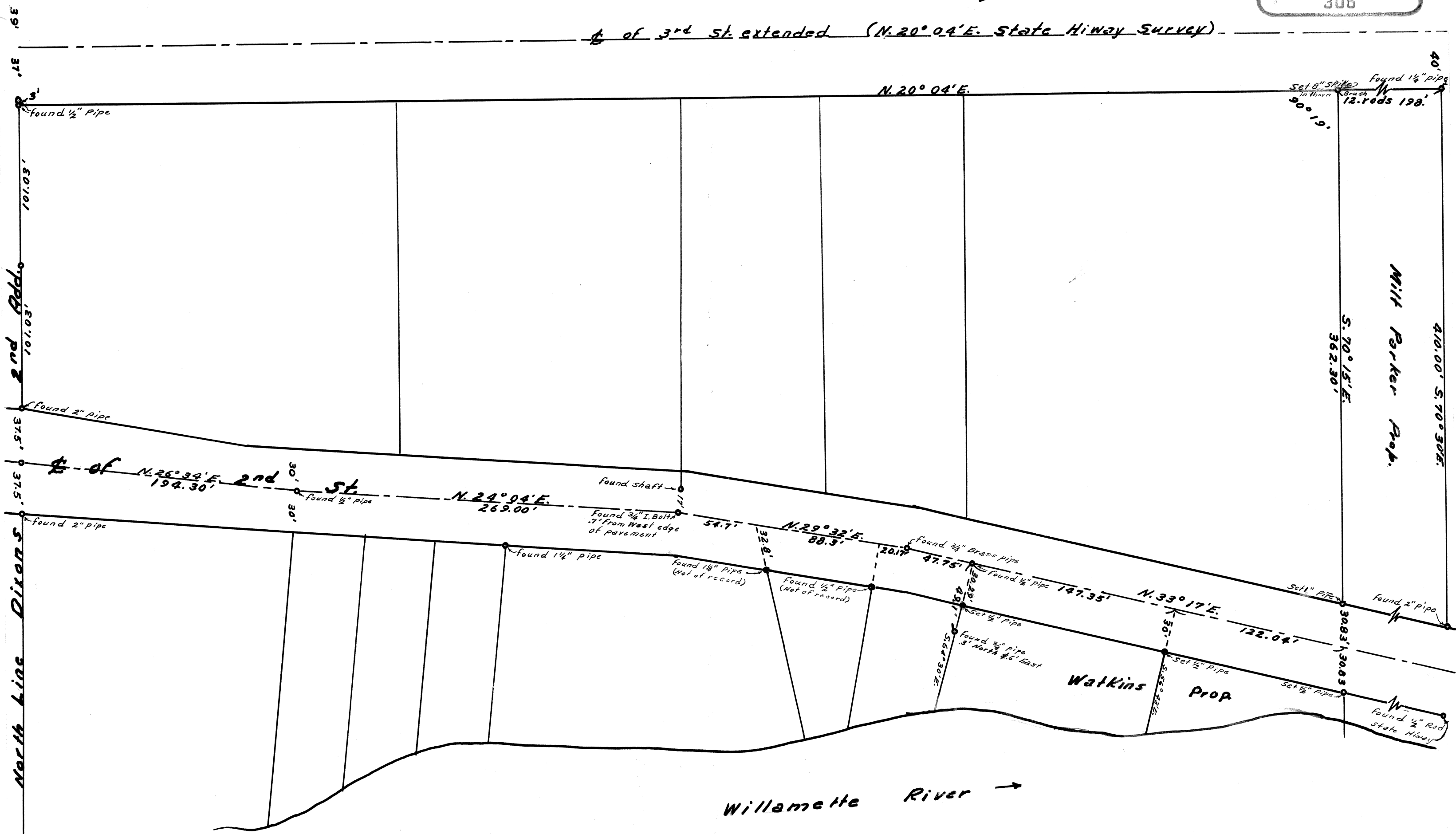
Survey For Tobias Watkins in the City of Corvallis Benton County Ore.

bearings of 2nd street extended from most southerly course of N.26°34'E.
bearings of South line of Milt Parker property, from East line of 3rd St.
Scale 1" = 60'
10-5-56 by J.W. Hanna

REGISTERED
OREGON
LAND SURVEYOR

J. W. Hanna
NOV. 6, 1953
J. W. HANNA
306

North



CS 2826

1" pipe

3083

3083

3083

3083

3083

3083

3083

3083

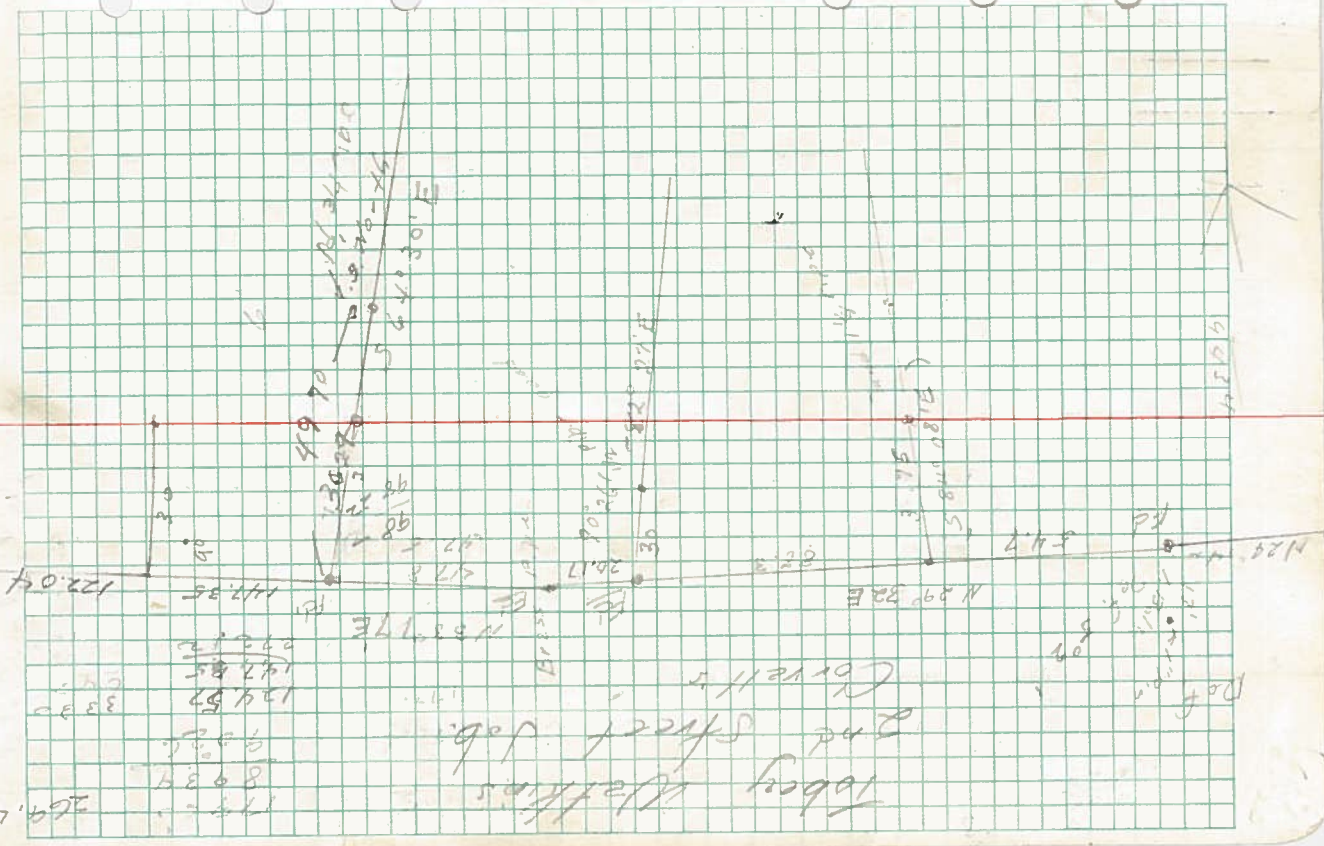
3083

3083

3083

3083

3083



Toboy Station
 2nd Street Job.
 Corvett's

Def

25.106

25.106

25.106

25.106

25.106

25.106

25.106

25.106

Dixon

Center Highway

City School

2.741
2.100
2.335

97.06

4.4

1.1

19.47
2.335
2.741

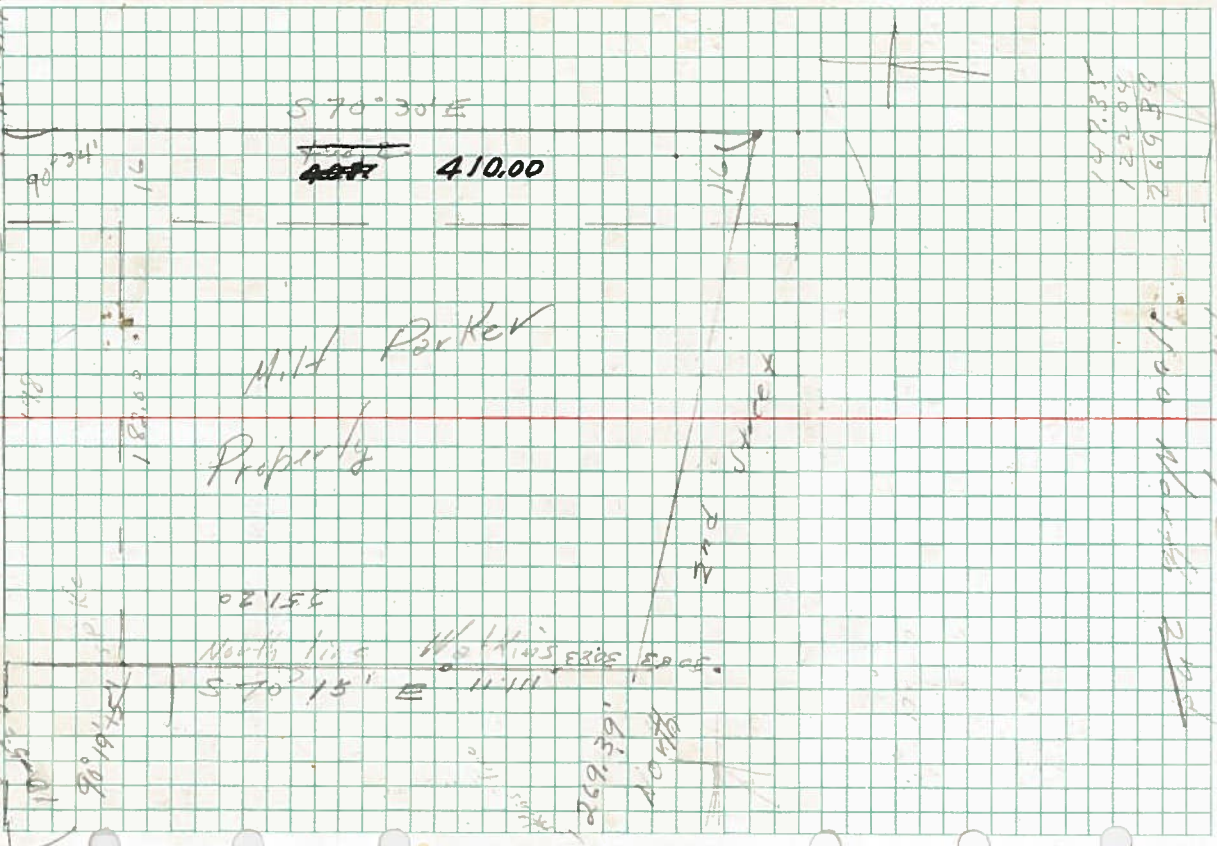
12.80
12.80
12.80

1.00
1.11

1.00
1.11
1.22
1.33
1.44
1.55
1.66
1.77
1.88
1.99
2.10
2.21
2.32
2.43
2.54
2.65
2.76
2.87
2.98
3.09
3.20
3.31
3.42
3.53
3.64
3.75
3.86
3.97
4.08
4.19
4.30
4.41
4.52
4.63
4.74
4.85
4.96
5.07
5.18
5.29
5.40
5.51
5.62
5.73
5.84
5.95
6.06
6.17
6.28
6.39
6.50
6.61
6.72
6.83
6.94
7.05
7.16
7.27
7.38
7.49
7.60
7.71
7.82
7.93
8.04
8.15
8.26
8.37
8.48
8.59
8.70
8.81
8.92
9.03
9.14
9.25
9.36
9.47
9.58
9.69
9.80
9.91
10.02
10.13
10.24
10.35
10.46
10.57
10.68
10.79
10.90
11.01
11.12
11.23
11.34
11.45
11.56
11.67
11.78
11.89
12.00

DIETZEN NO. 384-6

of 3 rods
Hwy BC via N 20° 34' E
4. 1500 E



58692
50221
182271

11.11
182.00
165.69