

Willamette River

set 3/4" pipe → 208.56'

461.35'

set 3/4" pipe → 208.56'

90° 54' 45" fd. 1 1/4" pipe

C. S. No. 2883

Earl B. Hathaway

Survey in T. G. Hogue Cl. # 77 Section 13

T. 12 S. R. 5 W. of the Will. Mer.

Scale 1" = 200'

Feb. 8, 1957

REGISTERED
OREGON
LAND SURVEYOR

J. W. Hanna
NOV. 6, 1953
J. W. HANNA
306



set 3/4" pipe → N. 89° 19' E. 223.00'

208.56'

set 3/4" pipe →

1975.00'

fd. 3/4" pipe

90.750' N. 0° 13' E.

N. 0° 13' E.

set 1/2" pipe

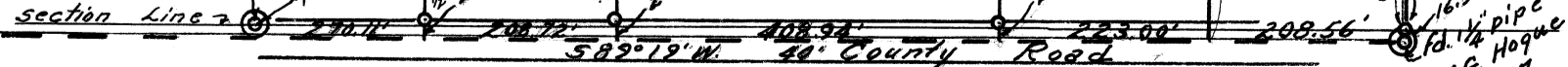
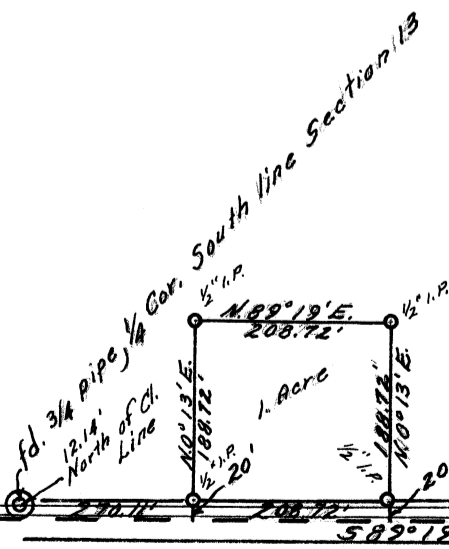
Vol. - 133 - 717

90° 54'

fd. iron Bolt

16.90' fd. 1 1/4" pipe

S.E. Cor. T.G. Hogue Cl. # 77



Note S.E. Cor. Cl. # 77 #
1. Ft. West of 1/16" Corner