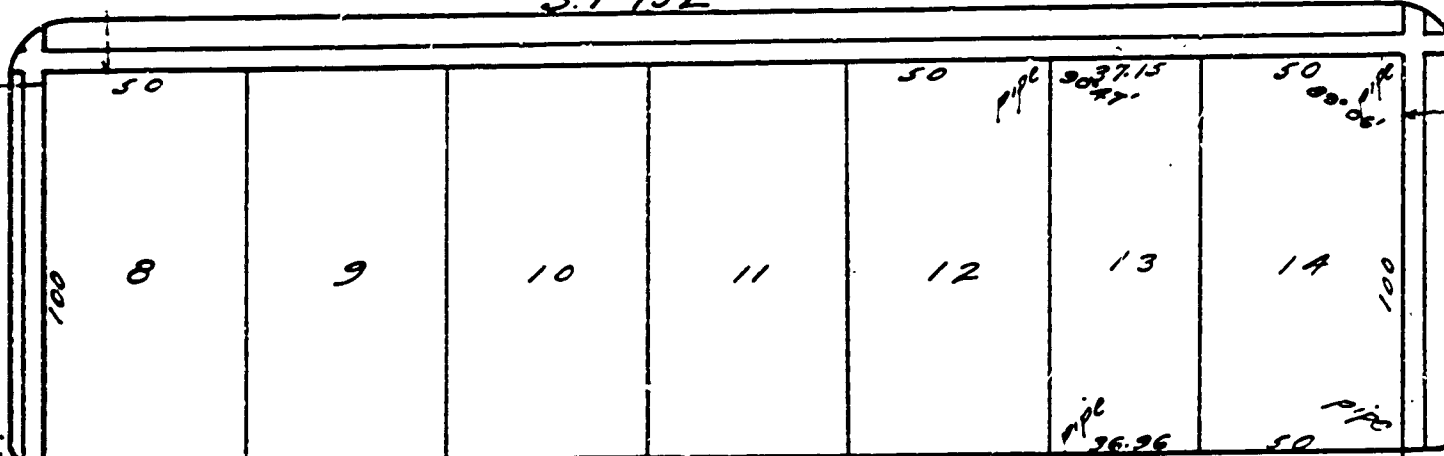


2900

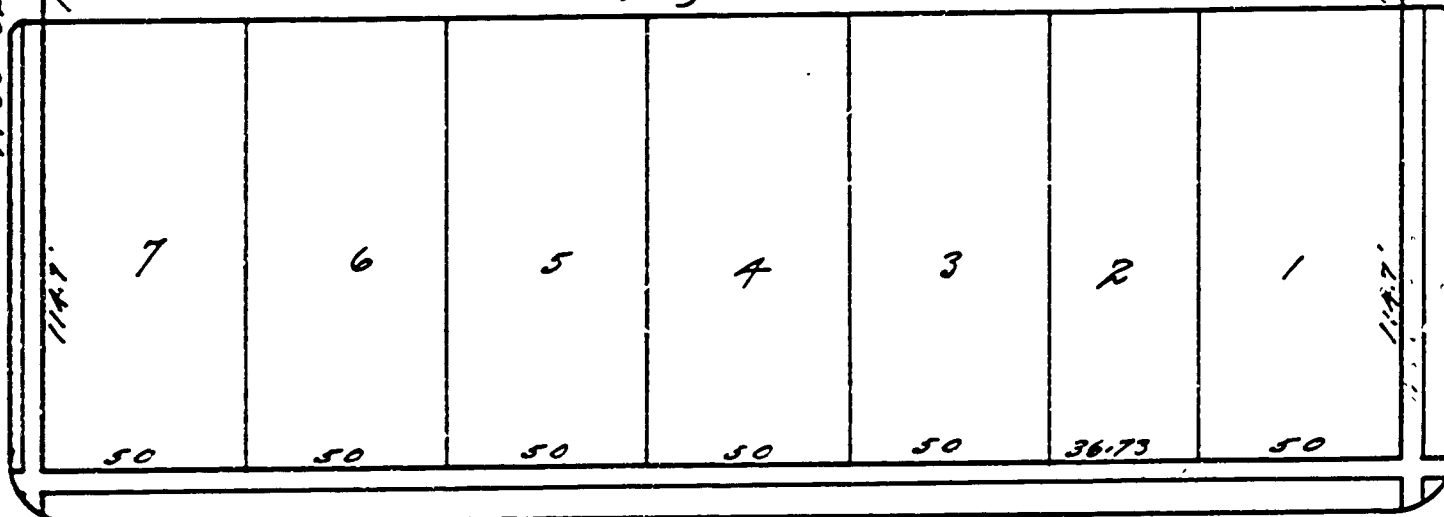
BLOCK 2 - HOLLENBERG'S ADDITION  
TO CORVALLIS, BENTON CO., ORE.

31<sup>ST</sup> STREET

S. 1° 15' E



14' ALLEY



30<sup>TH</sup> STREET

JACKSON ST.  
N. 89° 32' E.

VAN BUREN STREET  
S. 89° 39' W.