

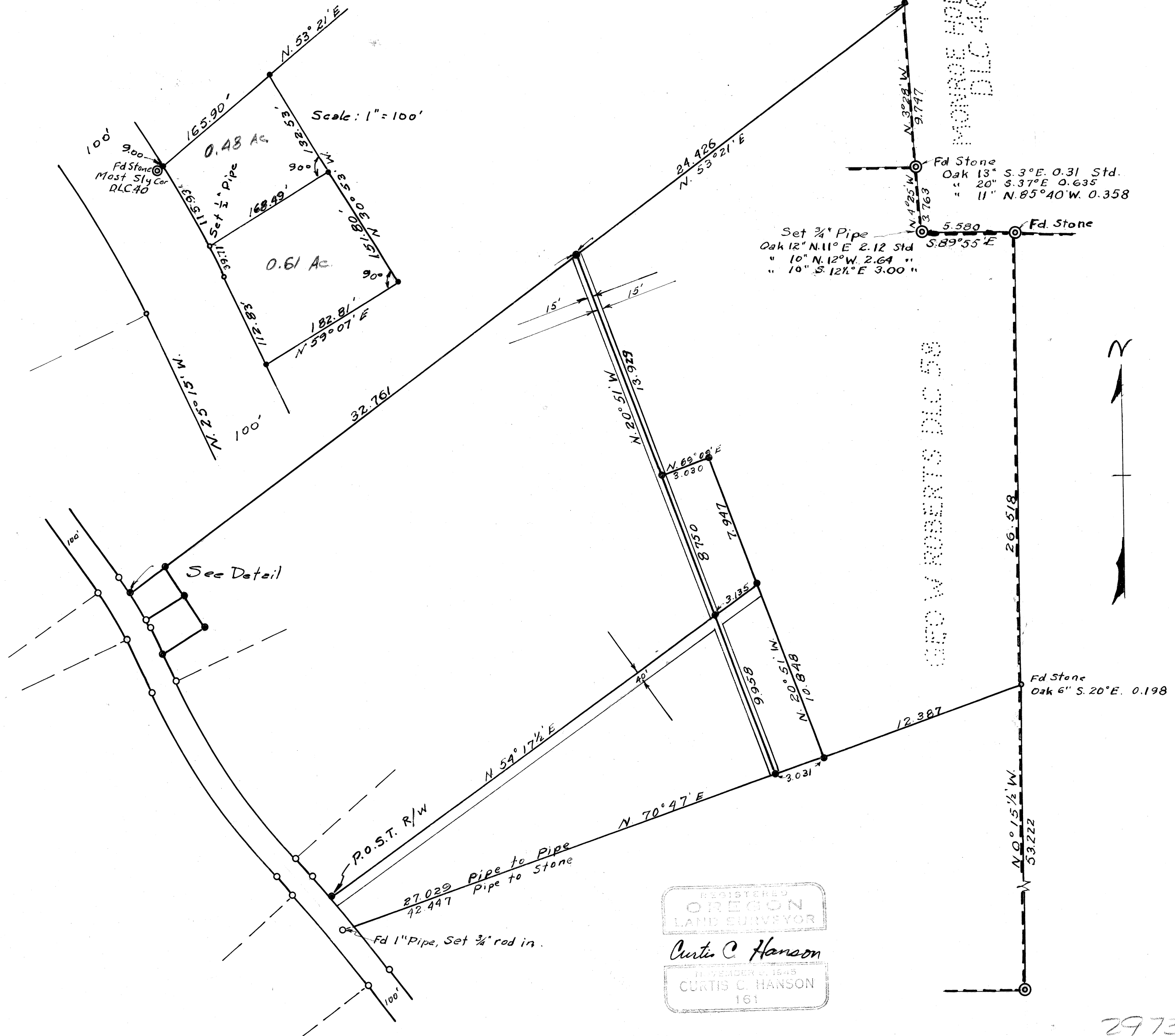
C.S. 2973

ROD L. BRENNEMAN

GEO. W. ROBERTS D.L.C. 59, TWP. 10 S., R. 4 W., W.M.

Scale: 1 in. = 5 chains

July 30, 1957



REGISTERED  
 OREGON  
 LAND SURVEYOR  
 Curtin C. Hanson  
 MEMBER O. L.S.-45  
 CURTIS C. HANSON  
 161

C. S. # 2973

5.30-57

AP  
Fillison

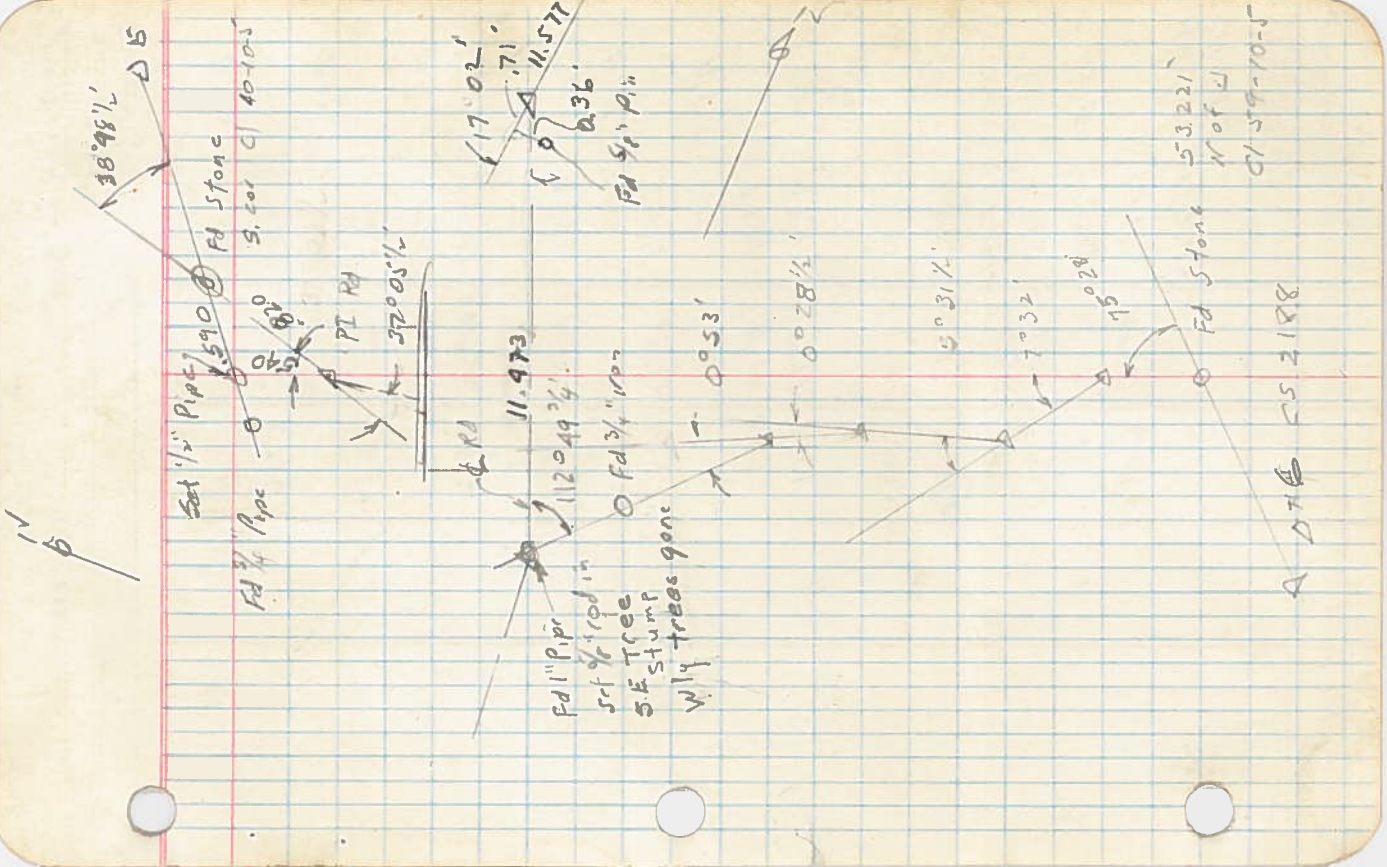
For Rob L. Arreneman

LINE DATE \_\_\_\_\_ PARTY \_\_\_\_\_

PROJECT \_\_\_\_\_

STATION POINTS 172 - 198251

1" Pipe & RA	7.927	+2°30'	7.919
D4	6.105	-1°12'	6.104
B3	4.0°53'		
	7.997	-4°41'	7.970
	7.873	-8°55'	7.778
D1	4.5°16'	-7°33'	4.477
FA Stone with +		LT 75°28'	from Δ#6 CS 2188



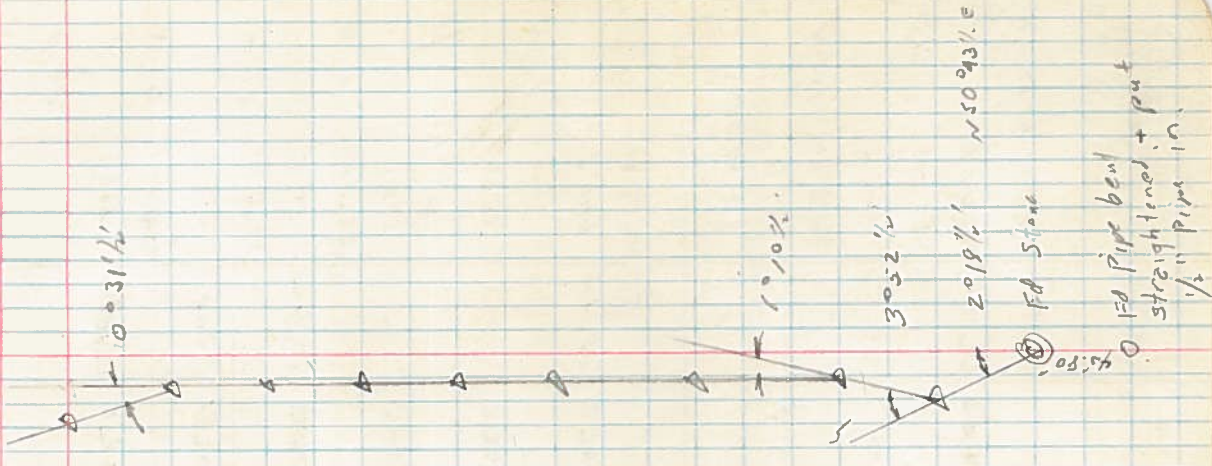


PROJECT \_\_\_\_\_ LINE DATE \_\_\_\_\_ PARTY \_\_\_\_\_

PROJECT

REC'D: 11/20/1972 100251

D 18	1.804	- 885	1.786
D 12	2.027	-	2.027
D 11	2.547	+ 9032	2.512
D 10	4.985	+ 10°55'	4.995
D 7	5.015	+ 13°26'	4.978
D 8	9.355	+ 10°13'	4.290
	7.931	+ 3048	7.914
D 7	6.982	+ 4°04'	6.964
	7.876	+ 0°41'	7.875
D 6	7.965	- 1°44'	7.961
D 5	6.112	- 7°12'	6.064
Most Sly		+ 2°18'	
Cor. C140			



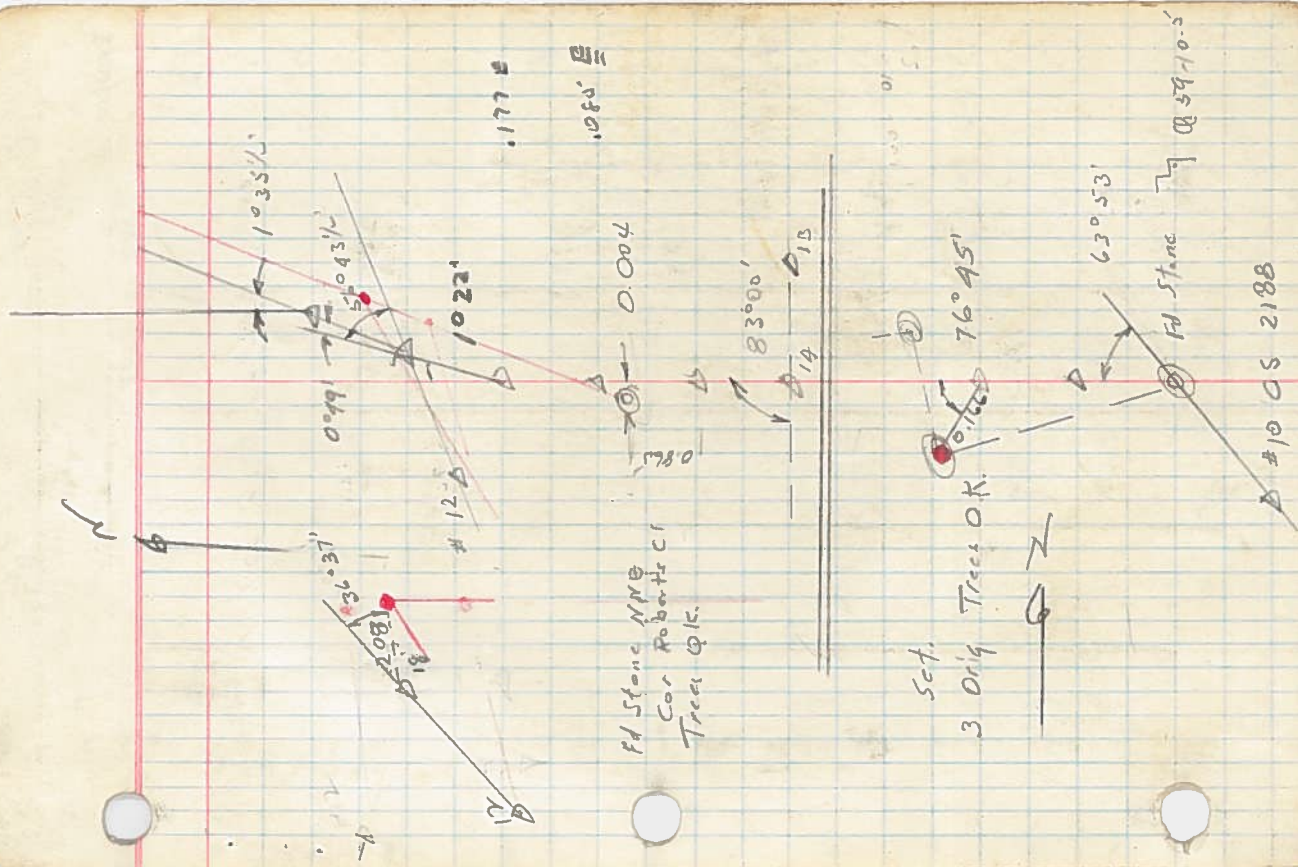
45.80'  
 2018 1/2'  
 3052 1/2'  
 1°10 1/2'  
 10°31 1/2'  
 Fd Stone  
 1/2" Pipe bend  
 straightened + put  
 1/2" Pipe in.

LINE DATE PARTY

PROJECT

KILHAM FOREST-173-196251

D 20	1.818	-10°33'	1.782
D 19	41°35'1/2	-4°26'	3.300
D 18	Rt 0°49'	-4°02'	3.907
D 17	Rt 1°22'	-	2.961
D 16	2.961	-	3.755
D 15	3.755	-	2.743
D 14	2.744	+1°51'	2.743
D 13	Rt 83°00'	-	0.166
Roberts Cl.	0.166	-	0.166
D 14	41°76°45'	+5°10'	2.748
D 13	2.759	+5°10'	2.748
FD Stone	2.865	+12°58'	2.792
EMR 6159	41°63°55'	-	-





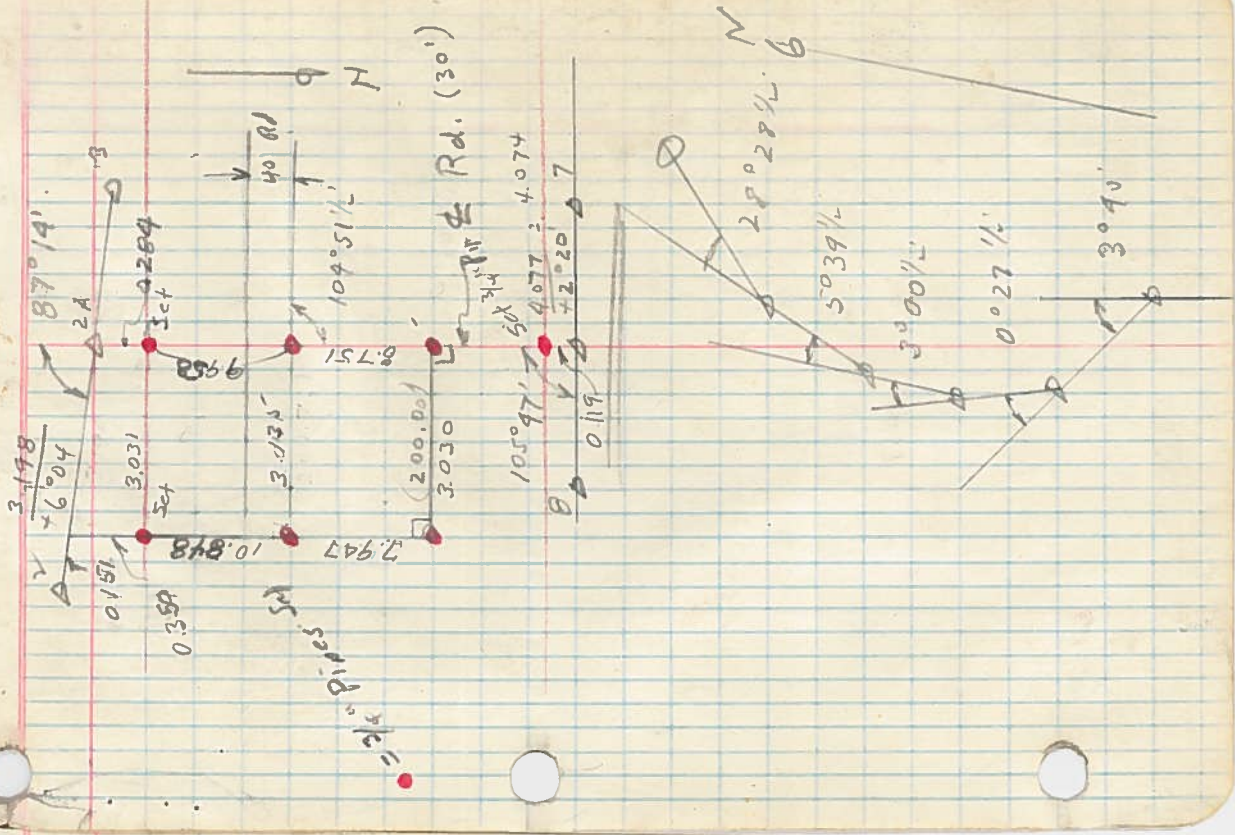
LINE DATE PARTY

PROJECT

KILMAN FORM P-172-196231

D 2-A	3.789	-2026	3786
D 2-C	6.453	-	6.453
A 25	0.758	-	0.758
Pipe 7/4"	8000	+2019'	7993
	6056	+2051'	6048
	8,000	-	8000
7-A	Rt 105° 47'		
1st Stone	On top	Tree - 0.4	
	.894	-	
D 24	Rt 28° 28 1/2'		
	1.664	+7° 17'	1.657
D 23	Rt 5° 39 1/2'		
	2.481	+12° 20'	2.924
D 22	Rt 3° 00 1/2'		
	2.526	+4° 43'	2.517
	Rt 0° 27 1/2'		
	<del>76023</del>		
D 21	1.612	-16° 33'	1.545
A 20	Lt 3° 40'		

= 3.1 FU



LINE DATE \_\_\_\_\_ PARTY \_\_\_\_\_

PROJECT \_\_\_\_\_

KELHAM FORM #3172-106251

0 27. Intert 83027'  
 5.869 + 324 5' 861  
 7.620 — 7620  
 7.490 - 0.58' 7439  
 7.910 - 9.52 7881

S.W. Cor N Hill Lot

