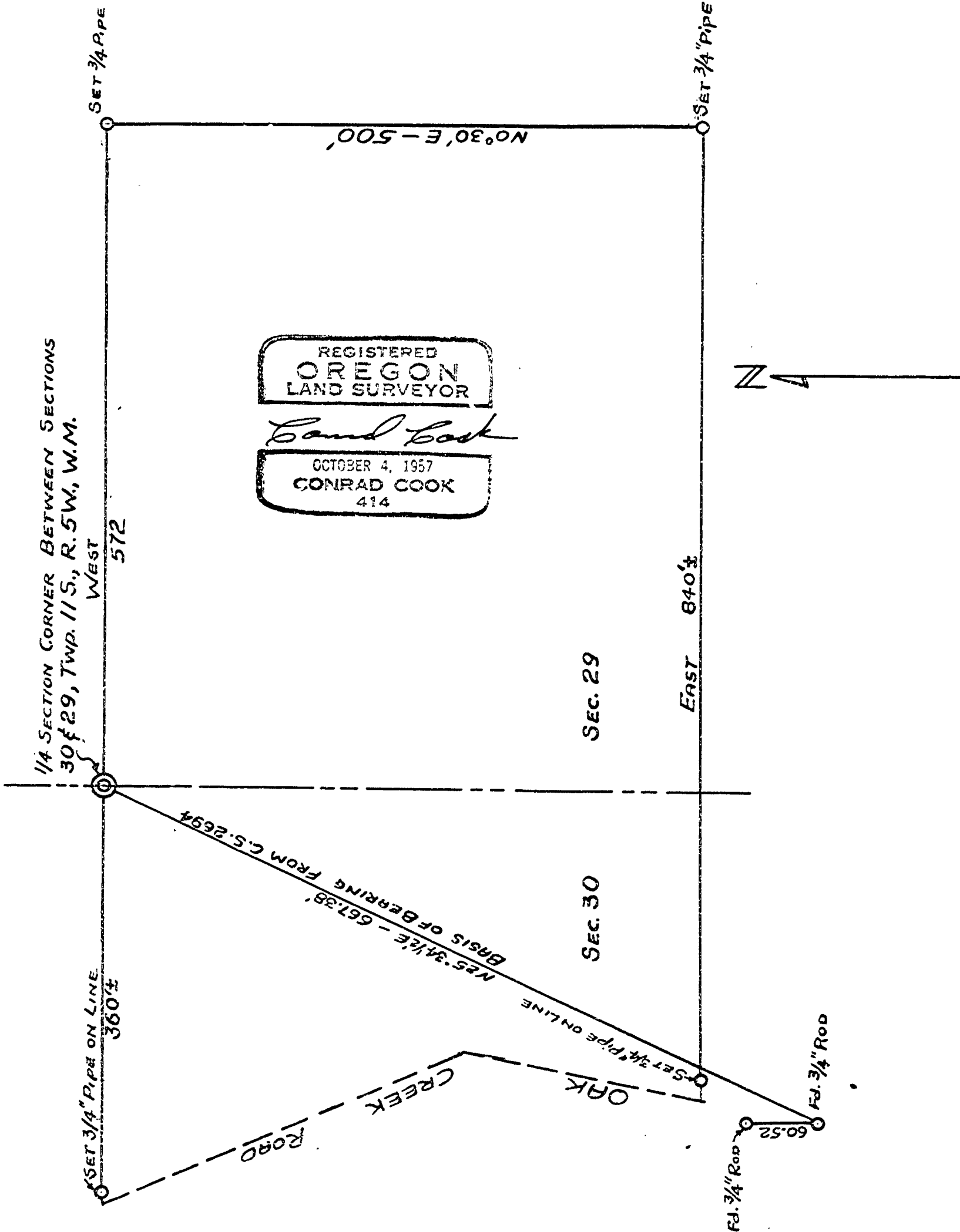


GILBERT A. PRUITT

IN SECS. 29 & 30, T.11S., R.5W., W.M.
BENTON COUNTY, OREGON

January 11, 1958

Scale: 1" = 100'



1/4 SECTION CORNER BETWEEN SECTIONS
30 & 29, Twp. 11 S., R. 5 W., W.M.

SET 3/4" PIPE

WEST
572

SET 3/4" PIPE ON LINE
360 ±

SET 3/4" PIPE ON LINE

REGISTERED
OREGON
LAND SURVEYOR

Conrad Cook

OCTOBER 4, 1957
CONRAD COOK
414

SEC. 29

SEC. 30

EAST 84° 0' ±

N

Fd. 3/4" Rod

Fd. 3/4" Rod

60.52

CREEK ROAD

SET 3/4" PIPE ON LINE

N 25° 34' E - 667.38'
BASIS OF BEARING FROM C.S. 2694