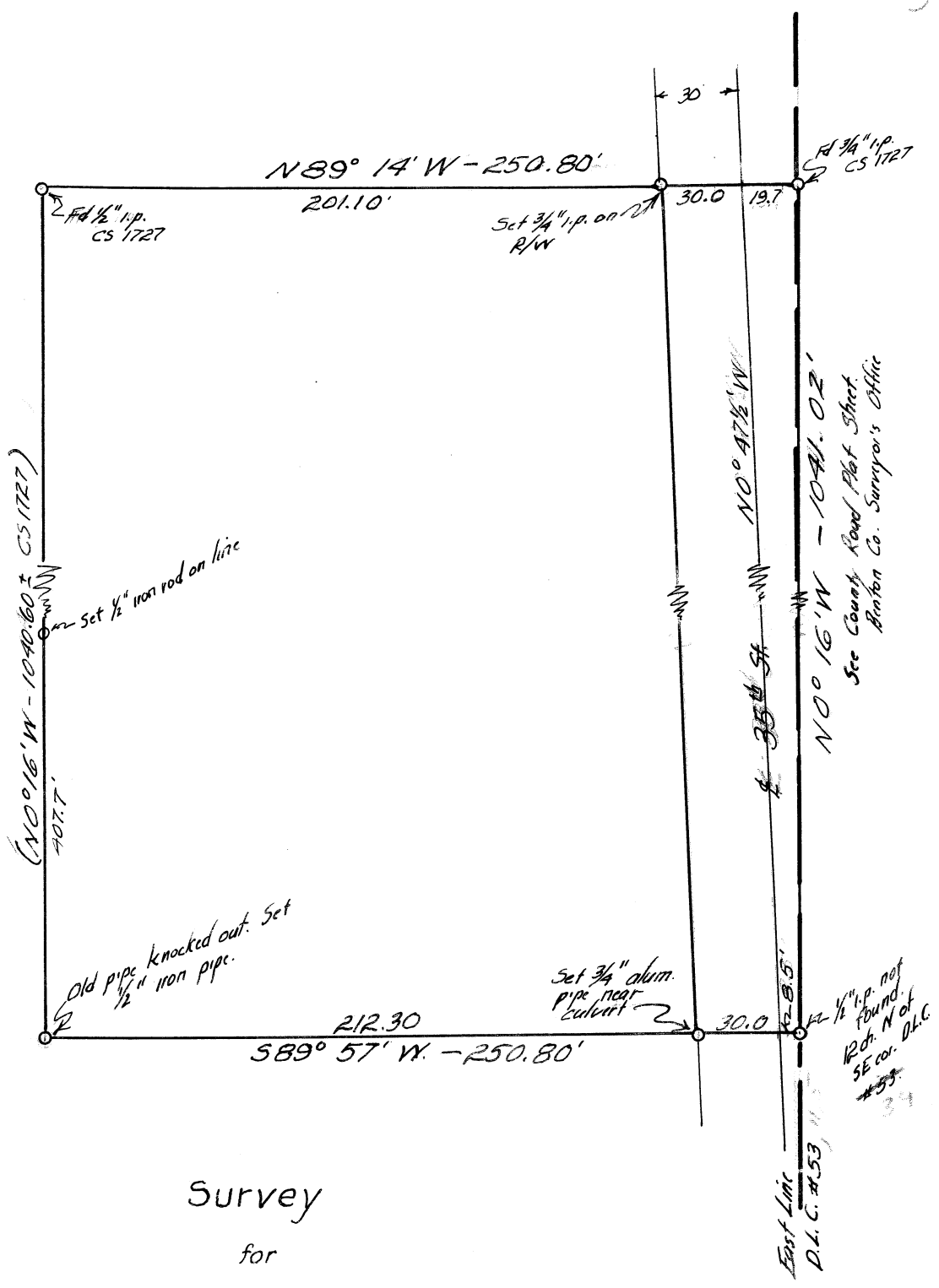


Bearings based on
N89°14'W line as
shown on C.S. 1727.



Survey
for

GORDON DODGE

D.L.C. #53, T. 12 S., R. 5 W., W.M.

Scale: 1 in = 60 ft
August 1958

REGISTERED
OREGON
LAND SURVEYOR

C.W. Dane

C.W. Dane.
Corvallis, Ore.

C.S. 3213