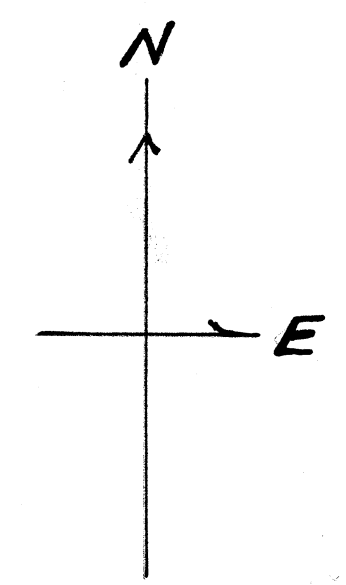


C.S. # 3240  
**THE RED FIR LBR. CO.**  
 WYMAN ST CLAIR D.L.C. #47, SEC. 12, T12S, R6W, W.M.  
 BENTON COUNTY, OREGON

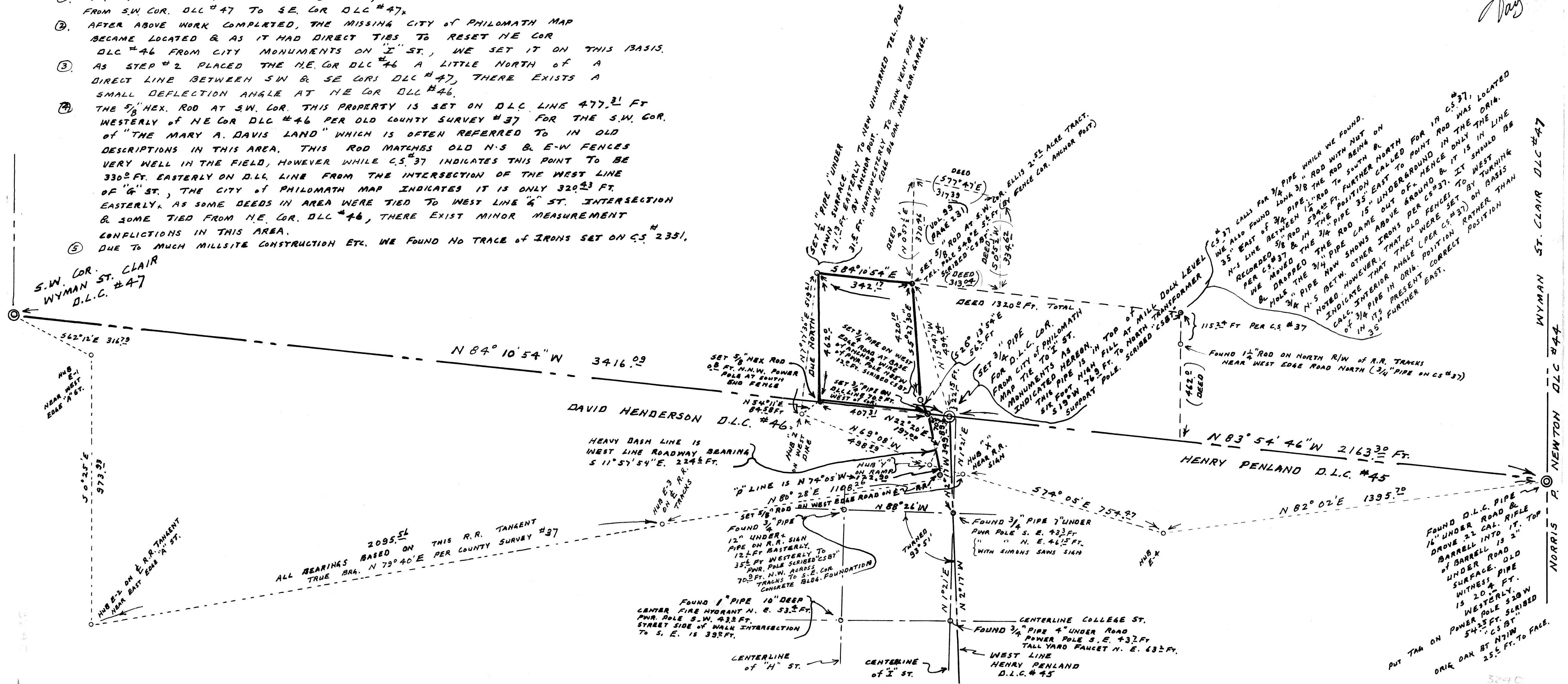
SCALE 1" = 200 FT.  
 TRANSIT & CHAIN  
 BEARINGS FROM 2000 FT PLUS  
 LONG RAILROAD TANGENT  
 PER COUNTY SURVEY #37  
 MAY 5, 1959

BERT W. UDELL  
 by HOWARD E. TAYLOR  
 REG. ENGRS.



*H.E. Taylor*

- PROCEDURE:-
1. N.E. COR D.L.C. #46 GONE IN MILLSITE AREA, HENCE WE RAN FROM S.W. COR. D.L.C. #47 TO S.E. COR. D.L.C. #47.
  2. AFTER ABOVE WORK COMPLETED, THE MISSING CITY OF PHILOMATH MAP BECAME LOCATED & AS IT HAD DIRECT TIES TO RESET N.E. COR. D.L.C. #46 FROM CITY MONUMENTS ON "I" ST., WE SET IT ON THIS BASIS.
  3. AS STEP #2 PLACED THE N.E. COR. D.L.C. #46 A LITTLE NORTH OF A DIRECT LINE BETWEEN S.W. & S.E. COR. D.L.C. #47, THERE EXISTS A SMALL DEFLECTION ANGLE AT N.E. COR. D.L.C. #46.
  4. THE 5/8" HEX. ROD AT S.W. COR. THIS PROPERTY IS SET ON D.L.C. LINE 477.31 FT WESTERLY OF N.E. COR. D.L.C. #46 PER OLD COUNTY SURVEY #37 FOR THE S.W. COR. OF "THE MARY A. DAVIS LAND" WHICH IS OFTEN REFERRED TO IN OLD DESCRIPTIONS IN THIS AREA. THIS ROD MATCHES OLD N-S & E-W FENCES VERY WELL IN THE FIELD, HOWEVER WHILE C.S. #37 INDICATES THIS POINT TO BE 330.0 FT. EASTERLY ON D.L.C. LINE FROM THE INTERSECTION OF THE WEST LINE OF "G" ST., THE CITY OF PHILOMATH MAP INDICATES IT IS ONLY 320.0 FT. EASTERLY. AS SOME DEEDS IN AREA WERE TIED TO WEST LINE "G" ST. INTERSECTION & SOME TIED FROM N.E. COR. D.L.C. #46, THERE EXIST MINOR MEASUREMENT CONFLICTIONS IN THIS AREA.
  5. DUE TO MUCH MILLSITE CONSTRUCTION ETC. WE FOUND NO TRACE OF IRONS SET ON C.S. #37.



WYMAN ST. CLAIR D.L.C. #47  
 NEWTON D.L.C. #44  
 NORRIS