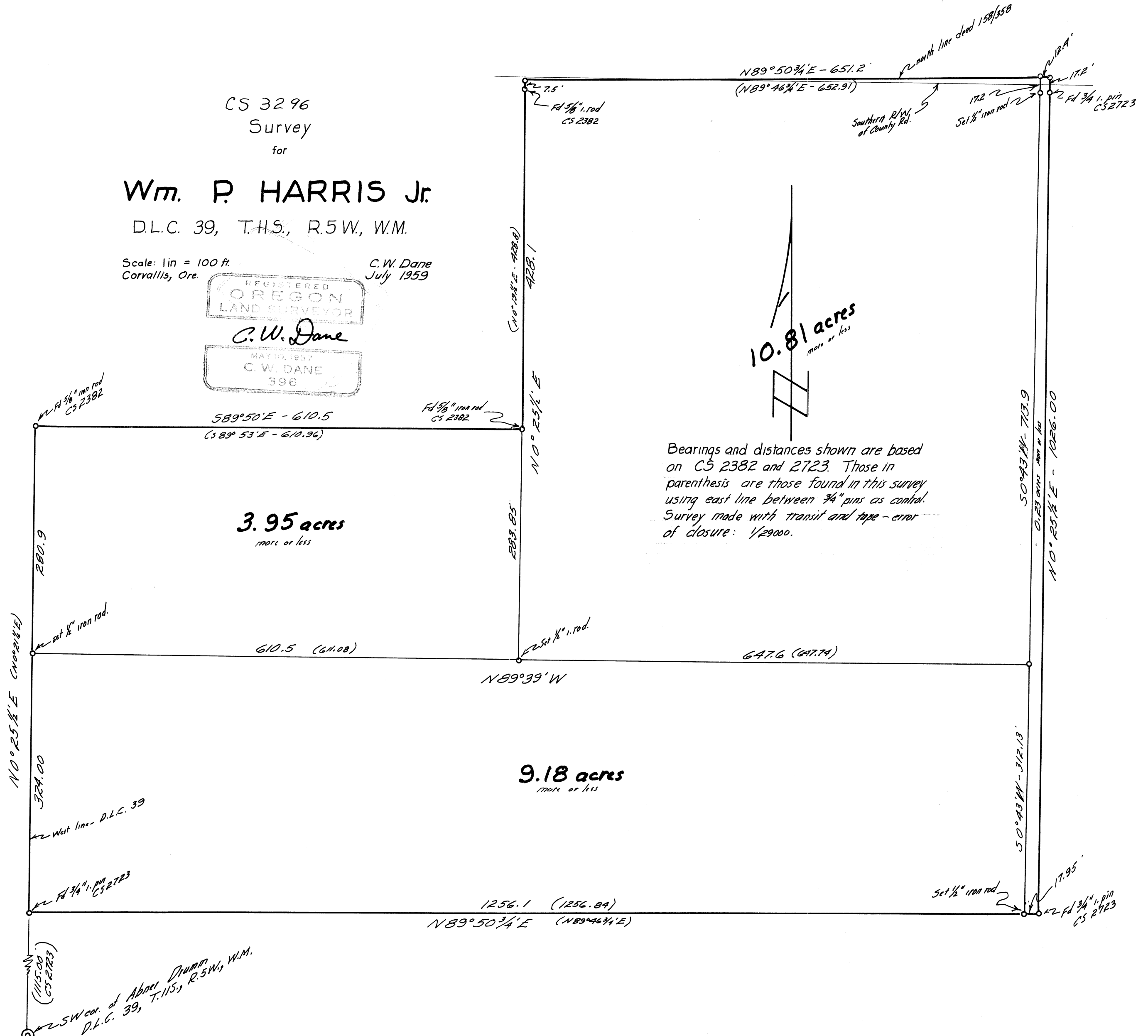
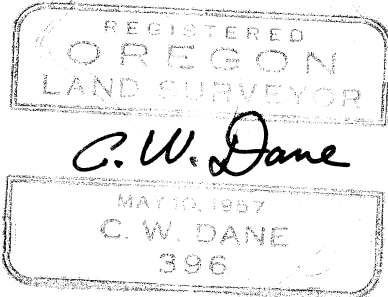


CS 3296
Survey
for

Wm. P. HARRIS Jr.
D.L.C. 39, T.H.S., R.5W, W.M.

Scale: 1 in = 100 ft.
Corvallis, Ore.

C.W. Dane
July 1959



10.81 acres
more or less

Bearings and distances shown are based on CS 2382 and 2723. Those in parenthesis are those found in this survey using east line between 3/4" pins as control. Survey made with transit and tape - error of closure: 1/29000.

SW cor. of Abner Drum
D.L.C. 39, T.11S, R.5W, W.M.