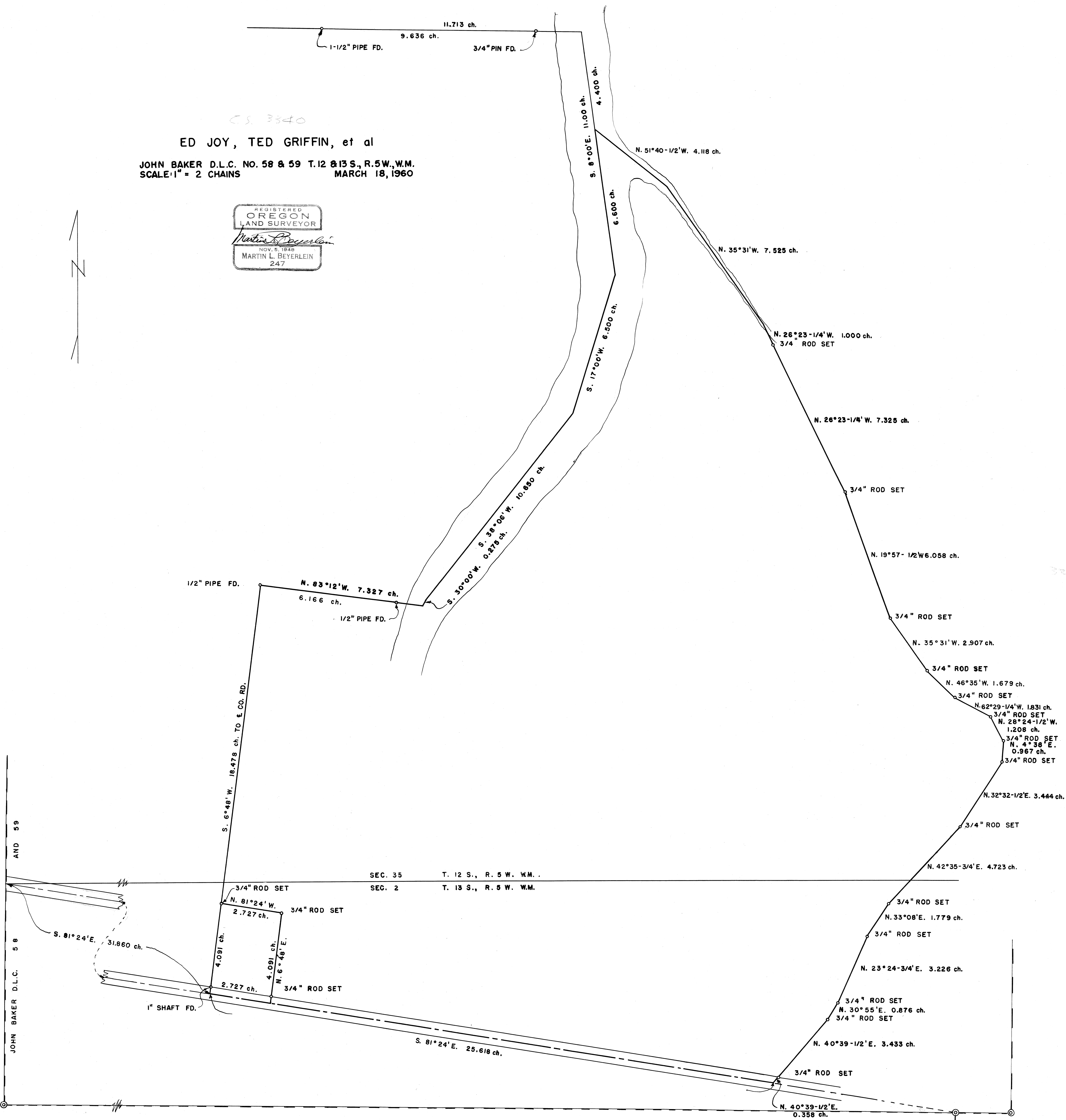
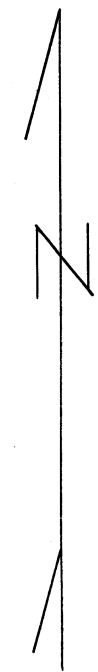
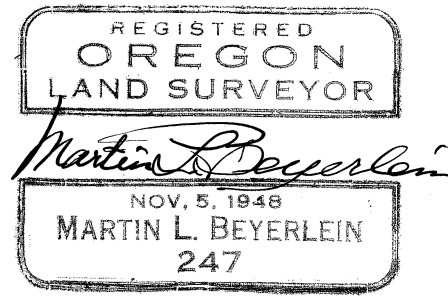


3340

CS 3340
 ED JOY, TED GRIFFIN, et al
 JOHN BAKER D.L.C. NO. 58 & 59 T. 12 & 13 S., R. 5 W., W.M.
 SCALE: 1" = 2 CHAINS MARCH 18, 1960



AND 59
 JOHN BAKER D.L.C. 58

SEC. 35 T. 12 S., R. 5 W., W.M.
 SEC. 2 T. 13 S., R. 5 W., W.M.

JESSE GAGE D.L.C. 45

3340