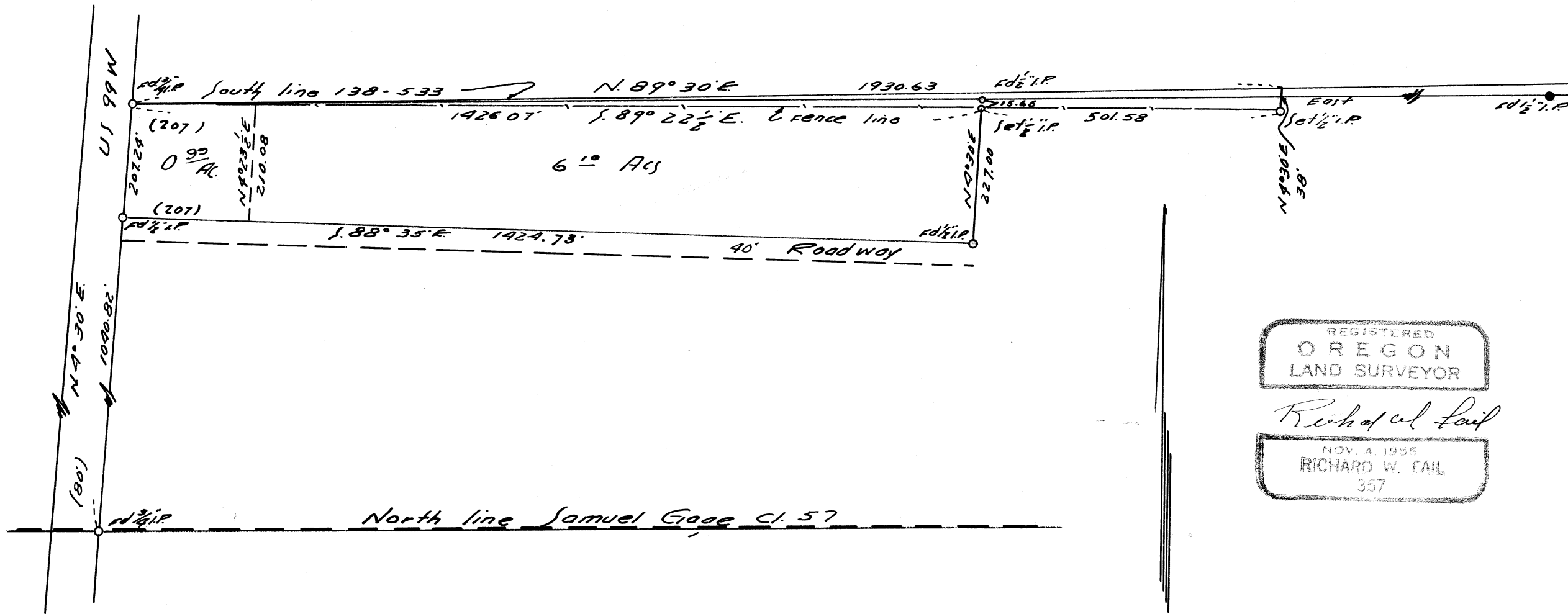


C) 3418  
 C.E. JONES  
 HARVEY YOUNG D.L.C. No 56  
 T. 12 S., R. 5 W., W.B.M.  
 Scale 1"=200'  
 Surveyed Sept. 10, 1960



REGISTERED  
 OREGON  
 LAND SURVEYOR

*Richard W. Fail*

NOV. 4, 1955  
 RICHARD W. FAIL  
 357