

C.S. N^o 3477

U.S. AIR FORCE

Tracts AW-18E, AW-17A, AW-29

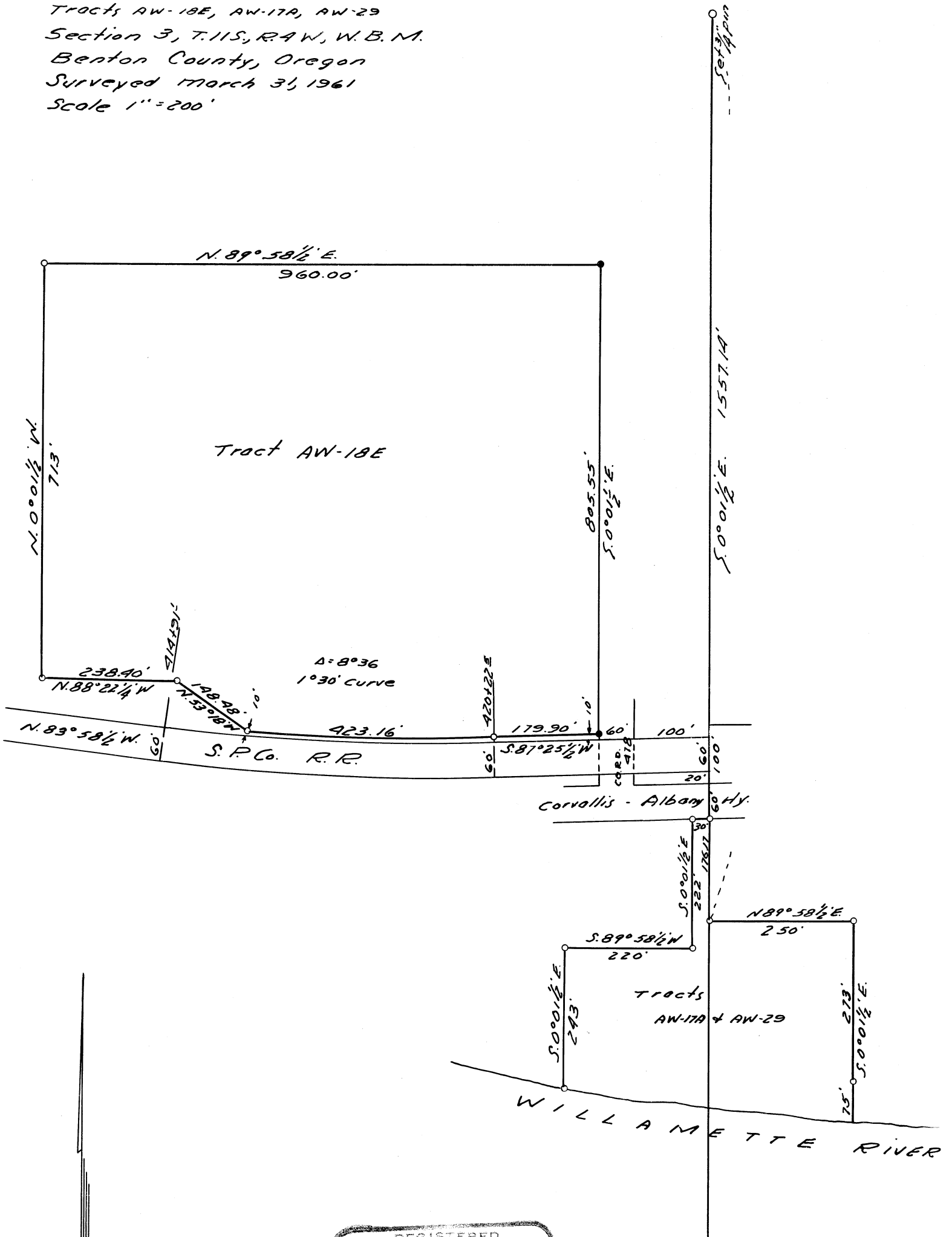
Section 3, T.11S, R.4W, W.B.M.

Benton County, Oregon

Surveyed March 31, 1961

Scale 1" = 200'

Center of Section 3



- 1/2" rods set
- 1/2" pipes set
- 3/4" rod set

REGISTERED
OREGON
 LAND SURVEYOR

Richard W. Fail

NOV 4 1955
RICHARD W. FAIL
 357

CS 3477

1/4 Cor N 1/4 Sec 3
No. 1 Rd.

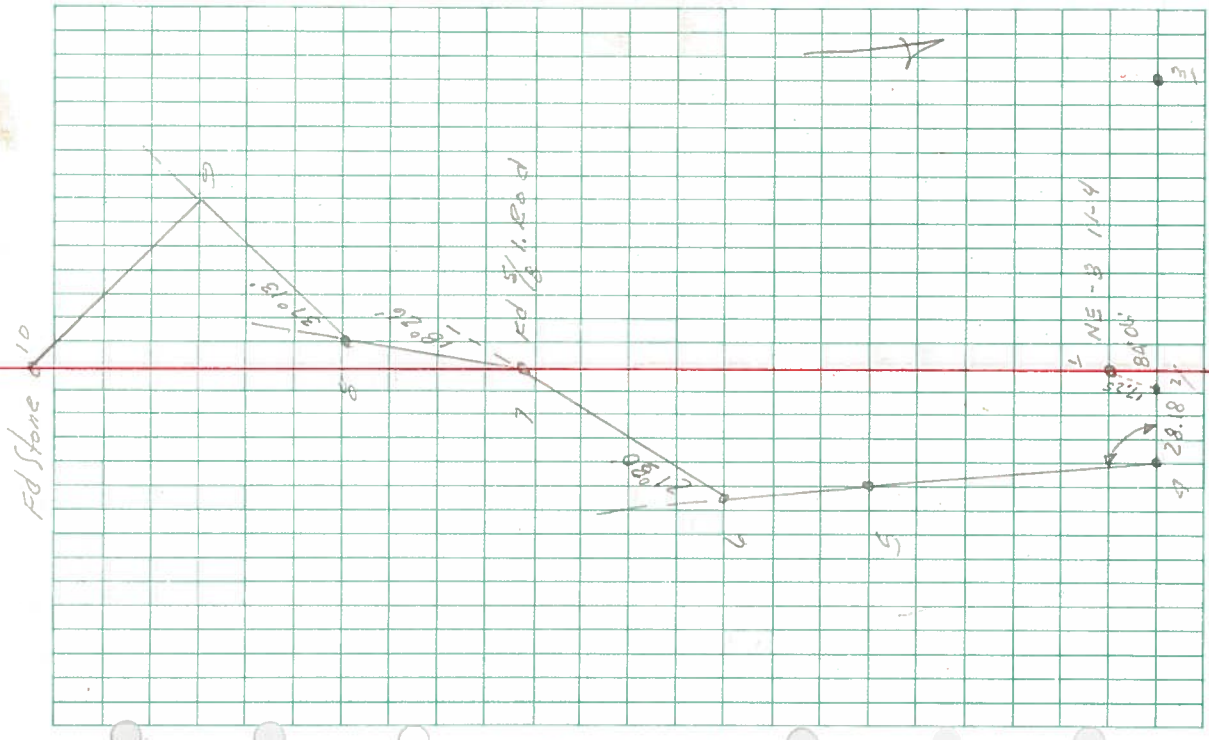


1/4 Cor N 1/4 Sec 3
No. 1 Rd.

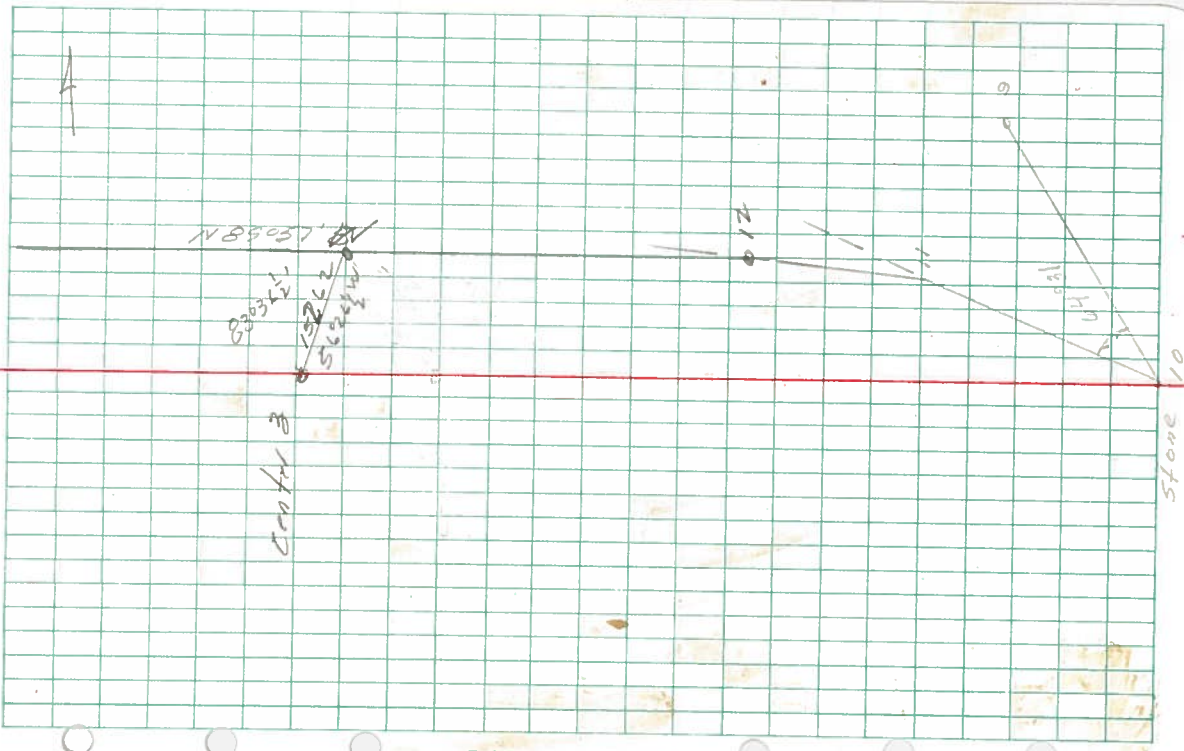
1/4 Cor N 1/4 Sec 3
No. 1 Rd.

DIETZEN NO. 385-3

10.4.201					
E 123-1-1	116.95	-	116.95		
	300	-3°45'	299.36		
	300	-4°44'	298.96		
9	1746.90'				
	(74°25')				
8	E 123-1-13				
	35.94	-	35.94		
	301	-9°06'	297.21		
7	4718.26'				
	208.60	-7°50'	206.65		
	14.06	-	14.06		
6	E 123-1-30				
	70.34	-2°	70.30		
	300	-4°	299.27		
5					
	284.30	+1°30'	284.20		
	56.73	+10°22'	55.80		
	300	+13°51'	291.69		
	300-	+8°30'	296.71		
4	1419.43				
	(183°25')				

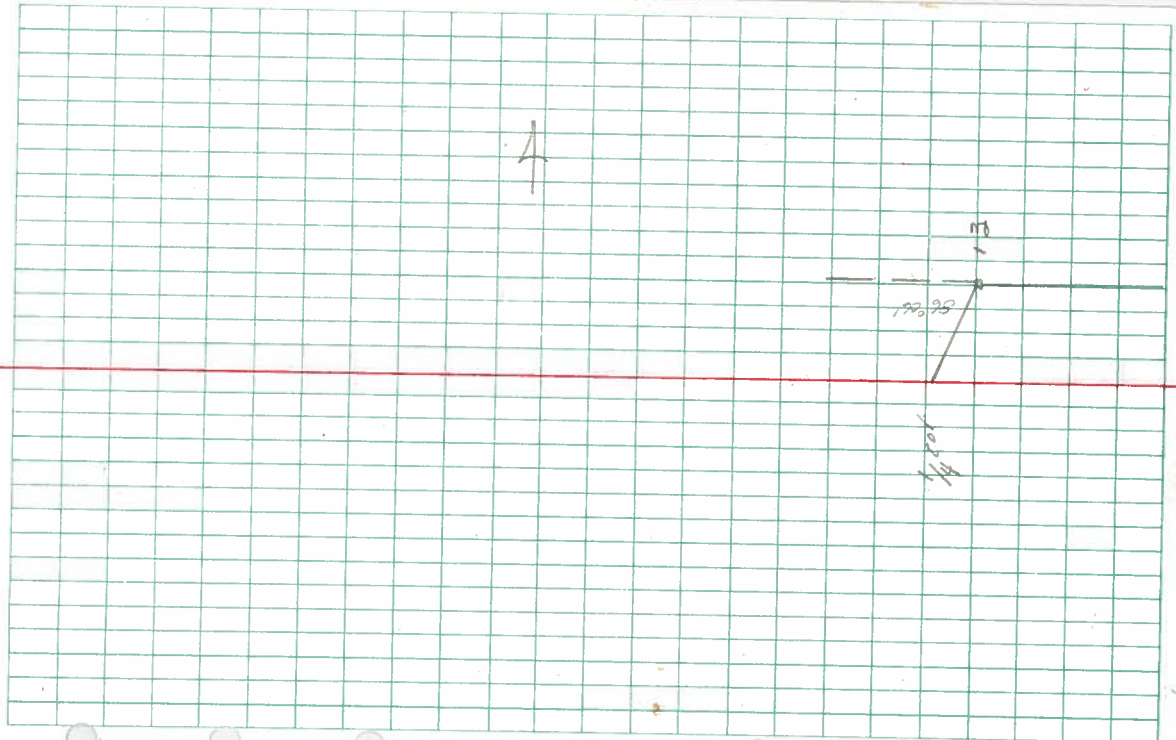


DIETZEN NO. 386-3



	300	-45'	299.97
	94.35	-	94.35
	300	-9°	299.27
	300	-10°20'	295.13
	181.33	-7°04'	179.95
	287.4	-	287.4
Mark Point →	272.65	-2°35'	1950.35
For G.3	22.10	-	22.10
	300	-2°15'	299.77
	300	-4°50'	298.93
	160.24	-	160.24
	300	+1°	299.96
	215	-3°	214.1
	82.27	-	82.27
	300	-	300
12	449.56		
	21.2	-	21
11	300	+11°10'	294.32
	103.60	+8°5'	102.57
	300	+5°16'	298.73
	64.31		
	1/4 Cor E line 3-11-4		

DIETZEN NO. 385-3



best of cor. w. line
2.11.4

13 1486006

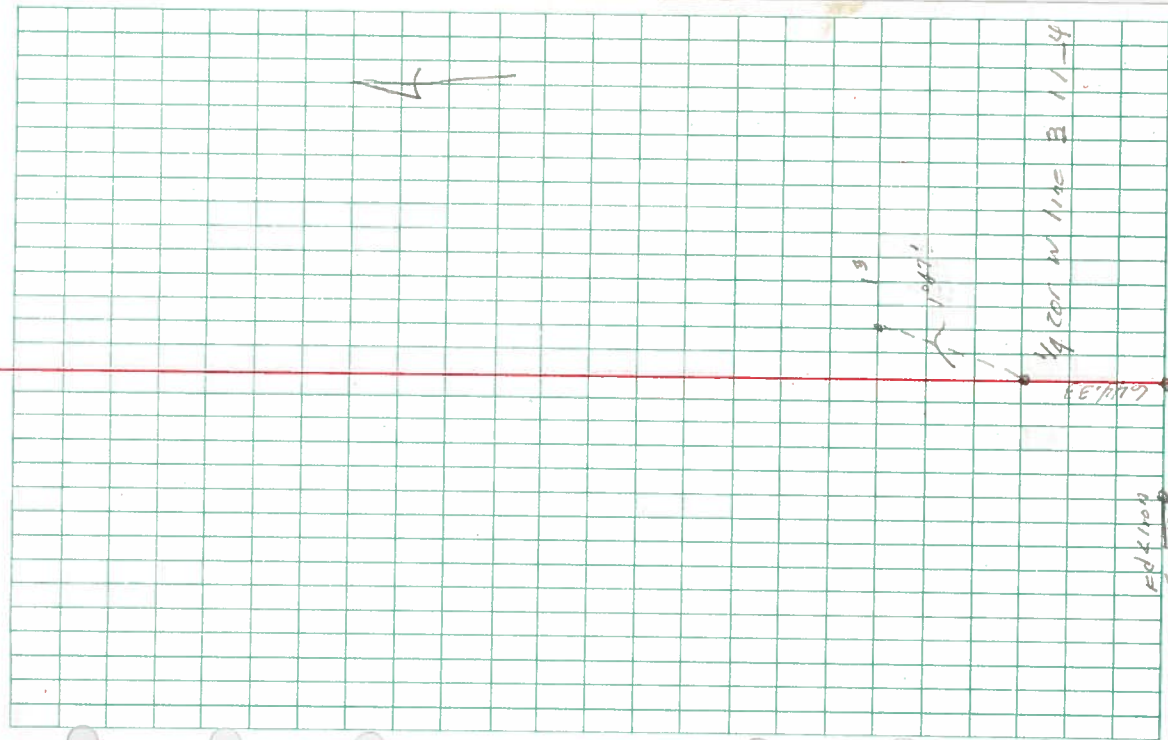
200.25	-1°30'	200.18
221.5	+1°30'	221.42
300	-3°	299.59
290.4	—	290.4
300	—	300

F3 Not Rd

140.5	-	140.5
300	-0°30'	299.99
72.40	-	72.40
300	+4°30'	298.93
300	-	300
300	-	300
171.87	-	171.87
300	+2°10'	299.79
300	0°30'	299.29
297.60	0°45'	297.57
300	+1°05'	299.95

1/2 Cor

DIETZEN NO. 385-3



Ed 4/104
NEC 197
11-4
48.31

1/4 Cor Stone S line 33

65.08 -

14 8722.93'

253.15 -

300 -

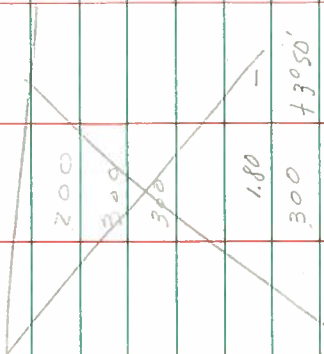
300 -

246.18 -

300 -

300 -5.45' 298.45

8782.06

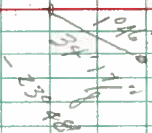


81050'

1.80

300

13050'



38.65'

DIETZEN NO. 385-3

F

2709.00

E

414.5 1/2

190.13

10/13

300

800

300

300

300

300

D

1149.43

209.50

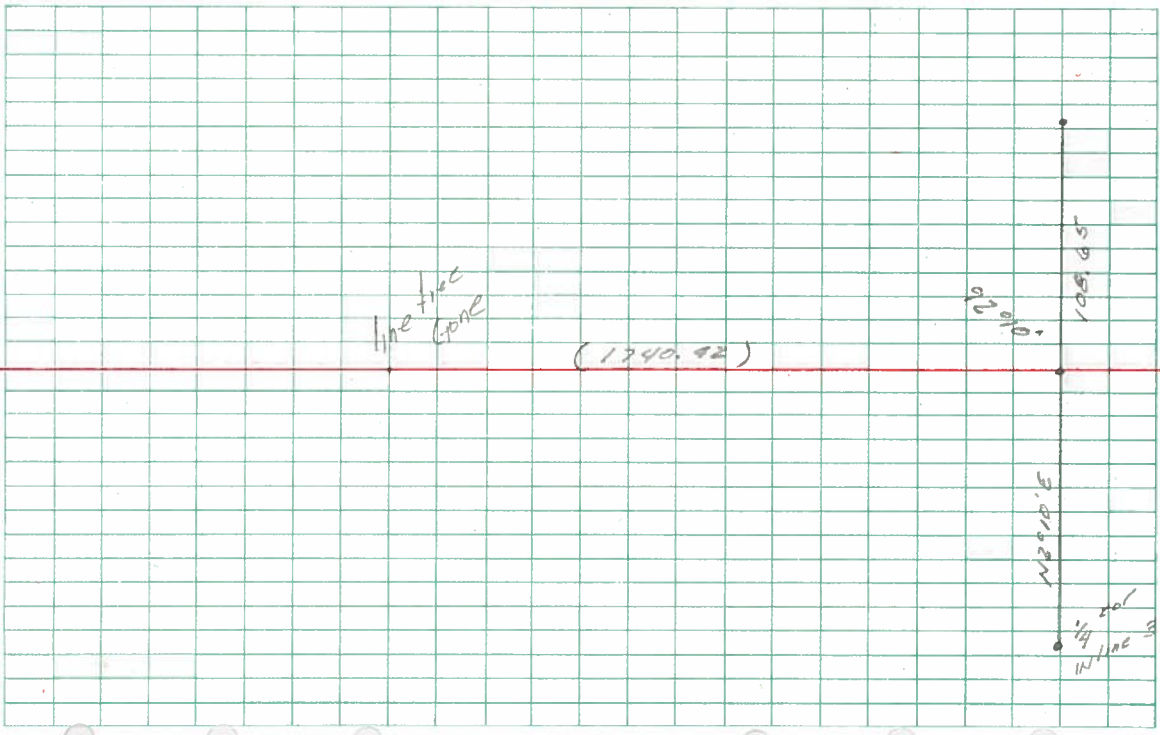
4.83

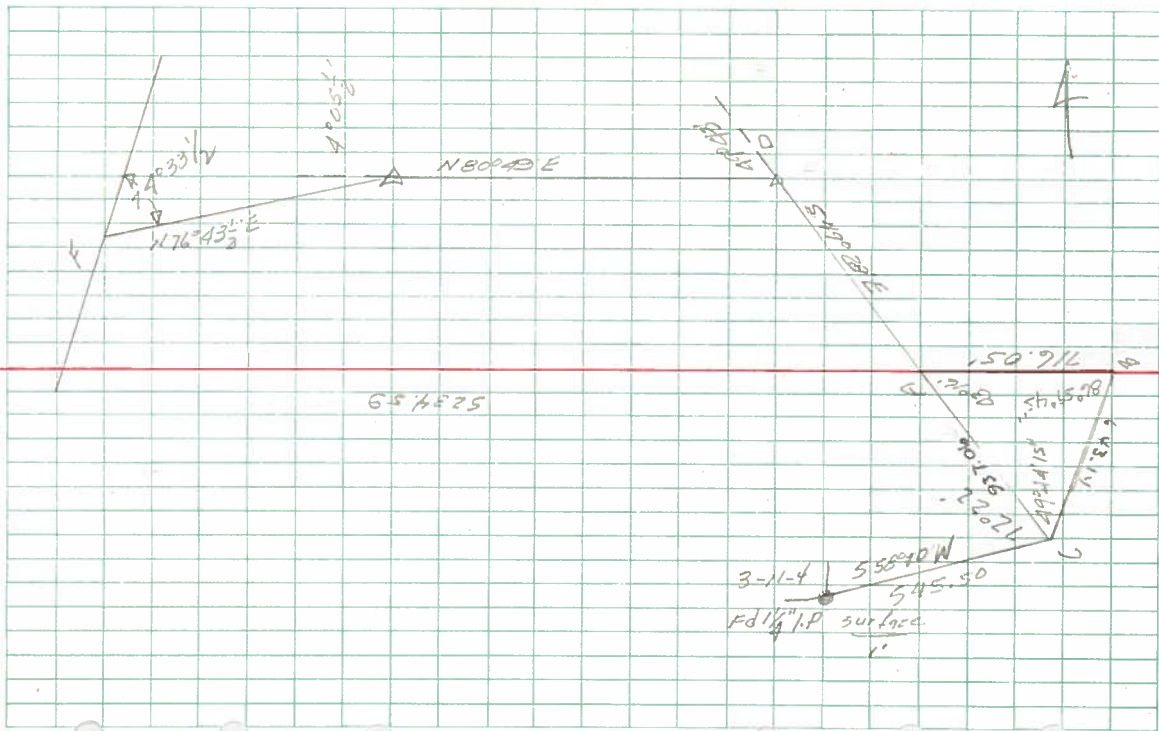
300

300 -10

299.57

A





DIETZEN NO. 385-3

2638.28

104.65

Run E from here (F)

300

299.10

85

300

offset 50' E

57.62

126

300

299.59

300

298.87

123

224.2

ERR

300

E of NE 42-11-4

