

C.S. 3538

HENRY J. PAVELEK

SEC. 31, T10S, R3W

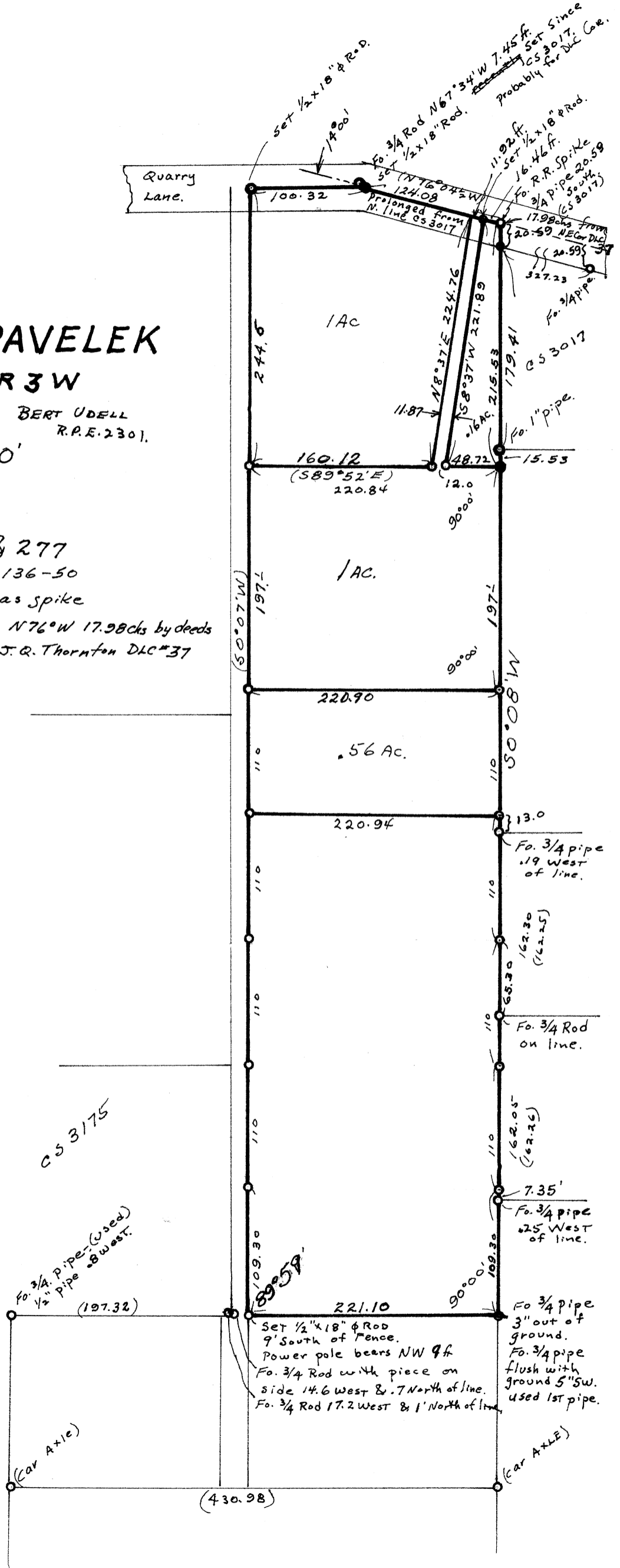
Aug. 25, 1961

BERT UDELL
R.P.E. 2301.

SCALE 1" = 100'

based on CS 3017 & 277

This Survey based on deed 136-50
R.R. Spike @ NW Cor same as spike
in CS 3017 This point is N76°W 17.98cks by deeds
from the NE Cor. of the J.Q. Thornton DLC#37
T10S, R3W.



Bert Uddell.