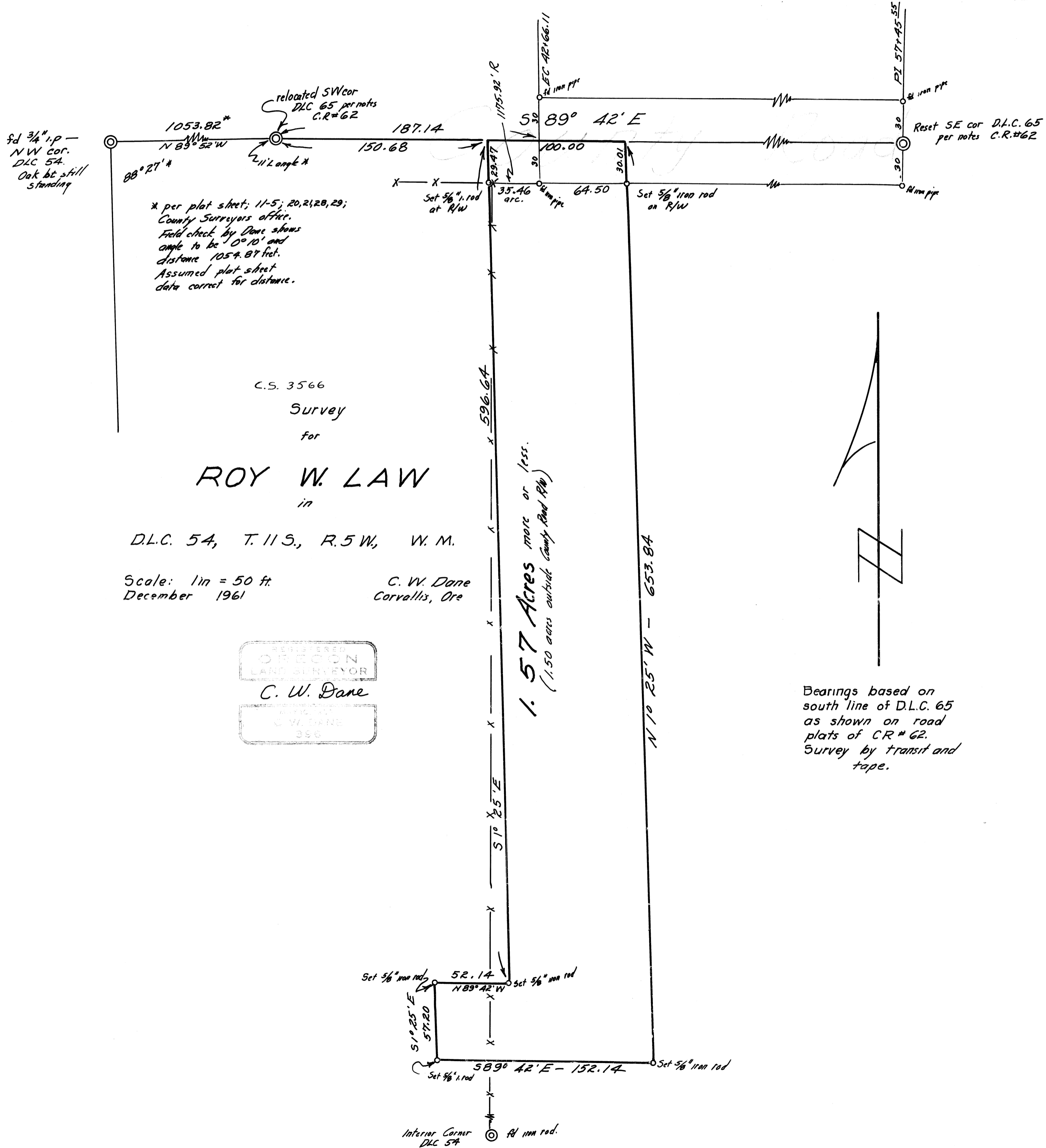


C.S. 3566



* per plat sheet; 11-5; 20, 21, 28, 29;
County Surveyors office.
Field check by Dane shows
angle to be 0° 10' and
distance 1054.87 feet.
Assumed plat sheet
data correct for distance.

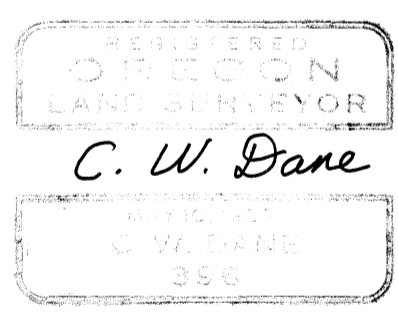
C.S. 3566
Survey
for

ROY W. LAW
in

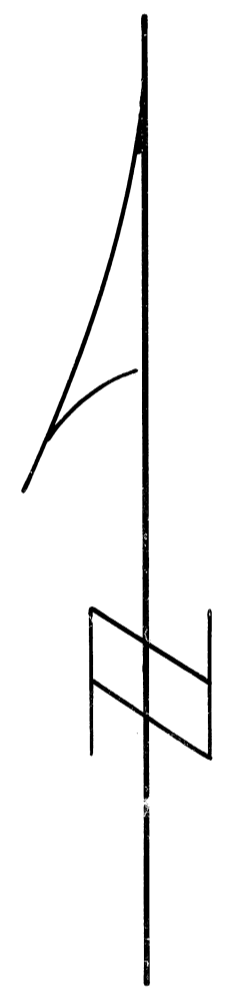
D.L.C. 54, T. 11 S., R. 5 W., W. M.

Scale: 1 in = 50 ft.
December 1961

C. W. Dane
Corvallis, Ore



1.57 Acres more or less.
(1.50 acres outside County Road R/W)



Bearings based on
south line of D.L.C. 65
as shown on road
plats of CR # 62.
Survey by transit and
tape.