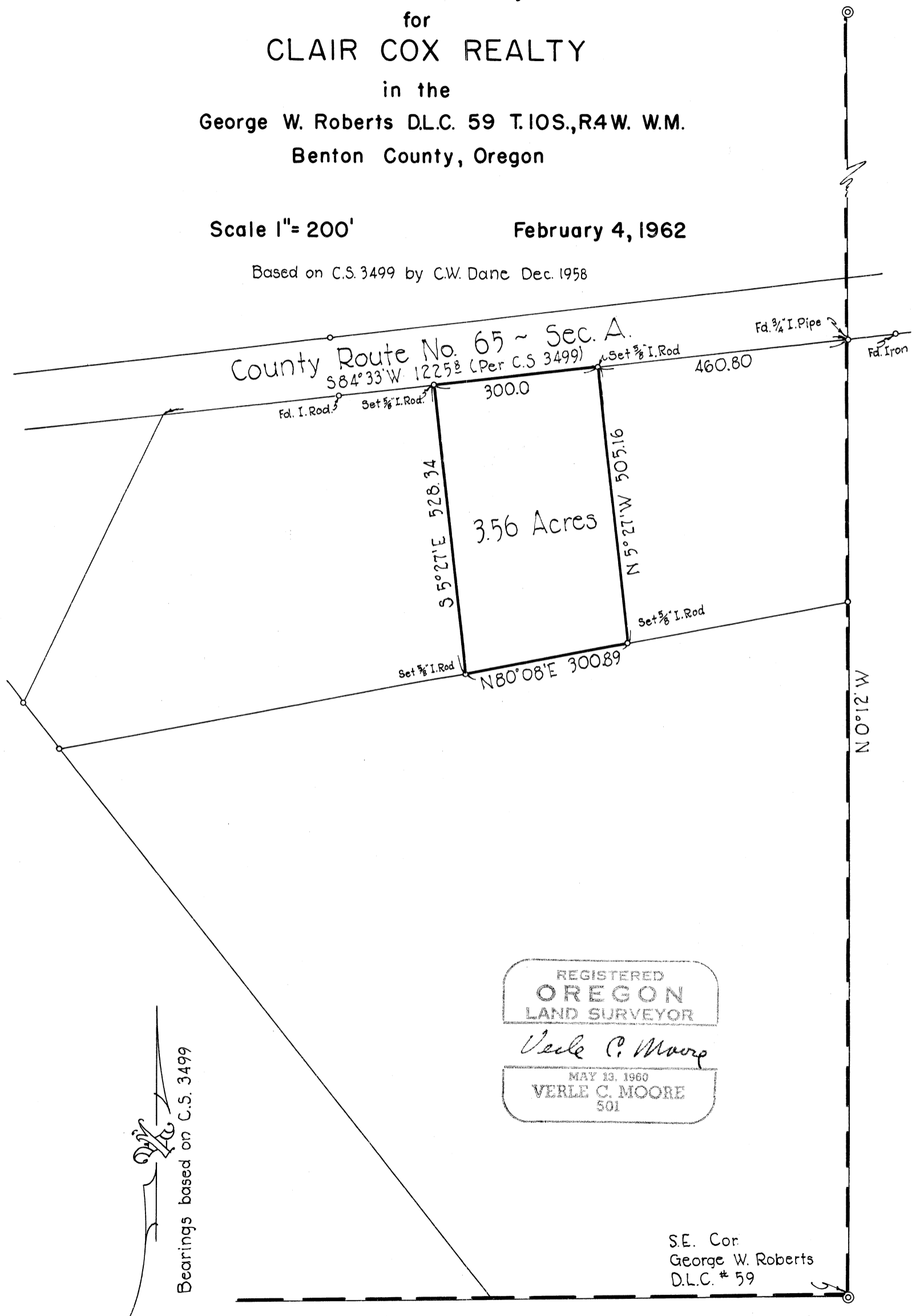


C.S. 3572
Record of Survey
for
CLAIR COX REALTY
in the
George W. Roberts D.L.C. 59 T.10S., R.4W. W.M.
Benton County, Oregon

Scale 1" = 200'

February 4, 1962

Based on C.S. 3499 by C.W. Dane Dec. 1958



VC
Bearings based on C.S. 3499

REGISTERED
OREGON
LAND SURVEYOR
Verle C. Moore
MAY 13, 1960
VERLE C. MOORE
501

S.E. Cor
George W. Roberts
D.L.C. # 59