

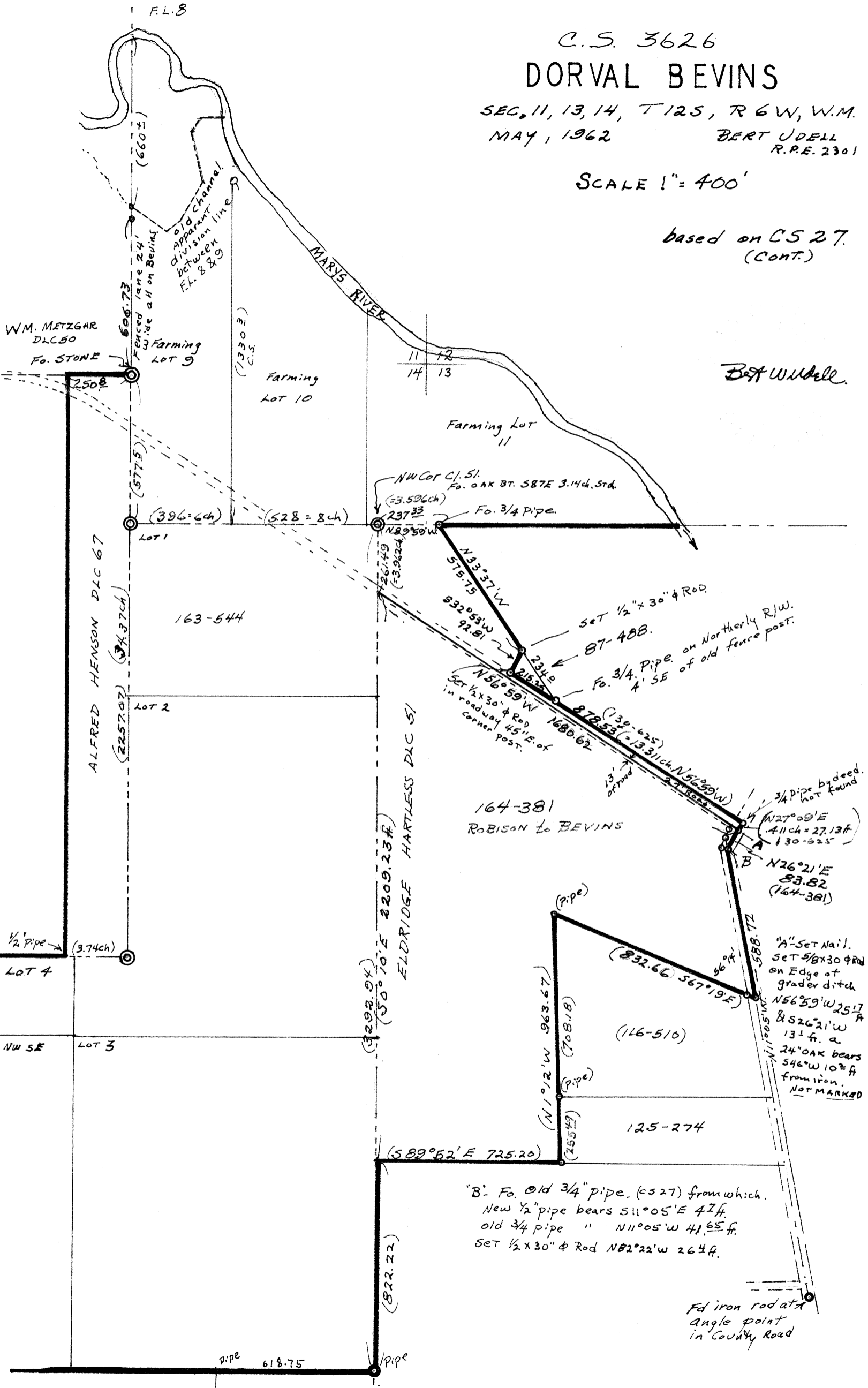
C.S. 3626  
DORVAL BEVINS

SEC. 11, 13, 14, T125, R6W, W.M.  
MAY, 1962  
BERT JOELL  
R.P.E. 2301

SCALE 1" = 400'

based on C.S. 27.  
(CONT.)

Bert Joell



"B": Fo. old 3/4" pipe, (C.S. 27) from which.  
New 1/2" pipe bears S11°05'E 47ff.  
old 3/4" pipe " N11°05'W 41.65 ff.  
Set 1/2 x 30" φ Rod N82°22'W 26 1/4 ff.

Fd iron rod at  
angle point  
in County Road