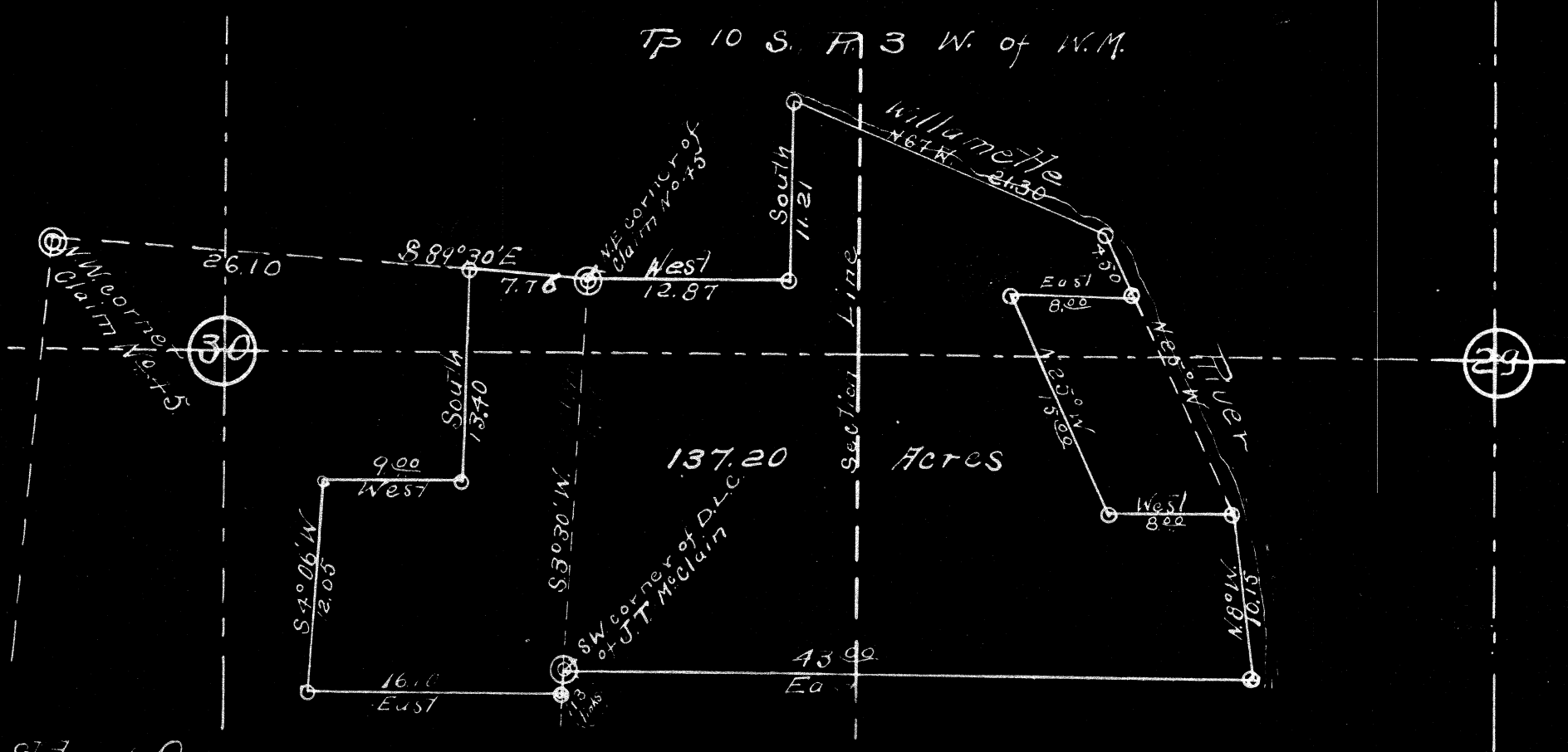


C.S. # 365

Tp 10 S. R. 3 W. of W.M.



State of Oregon }
County of Linn } SS

I, Alfred L. Goodes being first duly sworn say, that I am a qualified surveyor; that on the 22nd day of October, 1913, I surveyed the land represented by the above Plat; that I made the above Plat, and that said Plat and the distances and courses marked thereon are a true representation of such survey and the land so surveyed, which land is described as follows, to-wit: Beginning at the South-west corner of the Donation Land Claim of J.T. McClain, Certificate No. 3910 in Township 10 South, Range 3 West of the Willamette Meridian, Benton County, Oregon; — Thence West 43.00 chains along the South line of said Claim to the meander line on the left bank of the Willamette river; — Thence N 8° W 10.15 chains along the meander line of said river to a point 10.00 chains North of the South line of said Claim; — Thence West 8.00 chains; — Thence N 25° W 15.00 chains; — Thence East 8.00 chains to the meander line of the Willamette river; — Thence N 67° W 21.30 chains along said meander line; — Thence North 11.21 chains and North 12.87 chains and North 11.21 chains distant from the SW corner of the Donation Land Claim of J.T. McClain, Certificate No. 3910 in Township 10 South, Range 3 West of the Willamette Meridian, Benton County, Oregon; — Thence West 12.87 chains; — Thence N 86° 30' E 20.00 chains to a point which is 11.21 chains North of the SW corner of said Claim; — Thence West 12.87 chains; — Thence N 86° 30' E 20.00 chains to a point which is 11.21 chains North of the SW corner of said Claim; — Thence South 13.40 chains; — Thence West 9.00 chains to the SW corner of a certain Donation Land Claim of J.T. McClain, Certificate No. 45 in Township 10 South, Range 3 West of the Willamette Meridian, Benton County, Oregon; — Thence S 4° 06' W 2.05 chains; — Thence East 16.10 chains; — Thence S 3° 30' W 13.40 chains; — Thence East 43.00 chains to the beginning and containing 137.20 acres.

Alfred L. Goodes

described and surveyed by me on his 12th day of November, 1913.

W. J. [Signature]

Notary Public for Oregon

Erhart, A.

