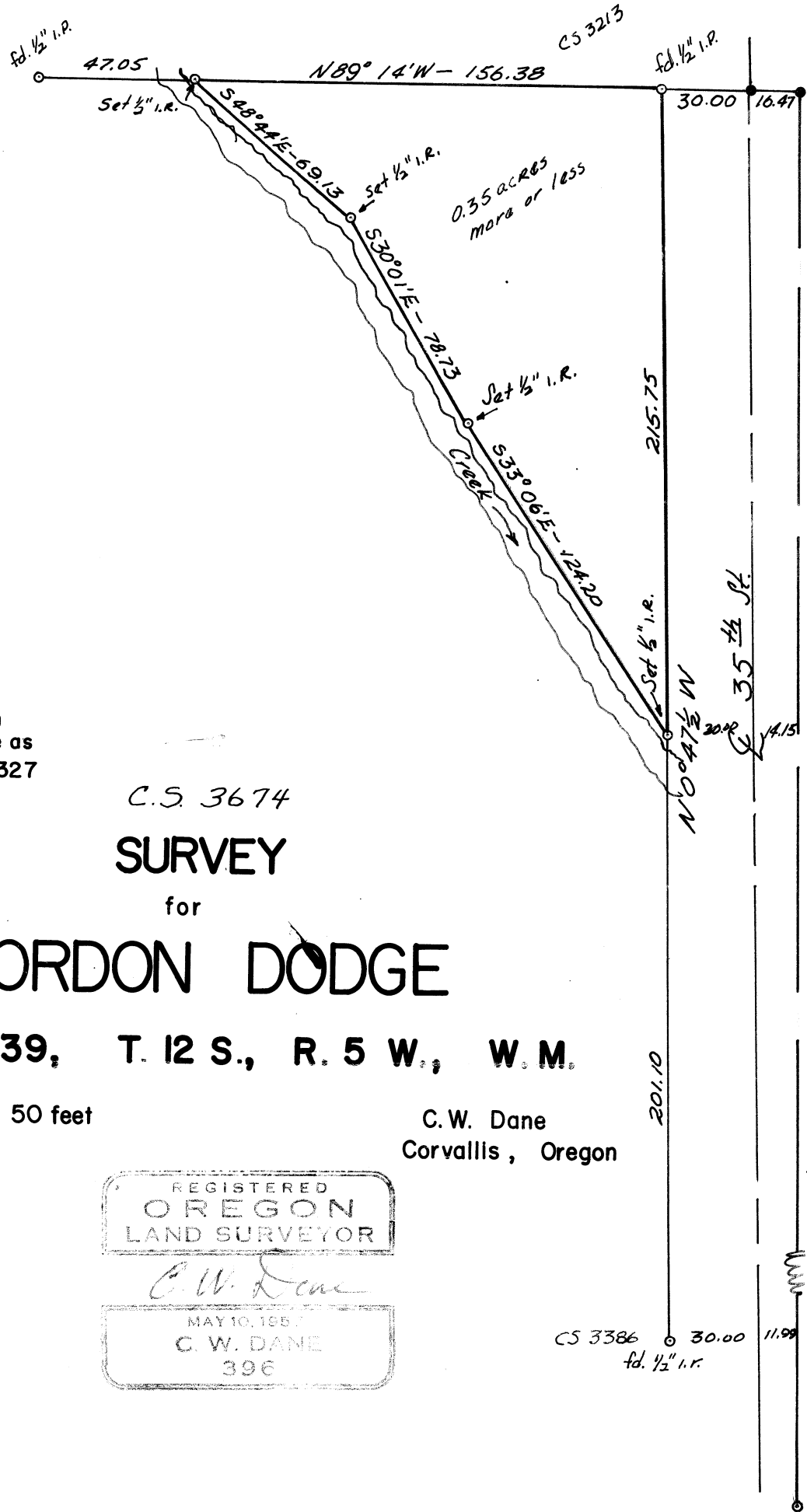




Bearings based on
N 0° 47.5' W line as
shown on CS 3327



C.S. 3674

SURVEY

for

GORDON DODGE

D.L.C. 39, T. 12 S., R. 5 W., W.M.

Scale 1 inch = 50 feet
Aug. 1961

C. W. Dane
Corvallis, Oregon

REGISTERED
OREGON
LAND SURVEYOR

C. W. Dane

MAY 10, 1957
C. W. DANE
396

N 0° 16' W - EAST LINE D.L.C. 39
1533.14 FEET FROM SE CORNER OF F.A. HERMANN D.L.C. 39, T. 12 S., R. 5 W.

4