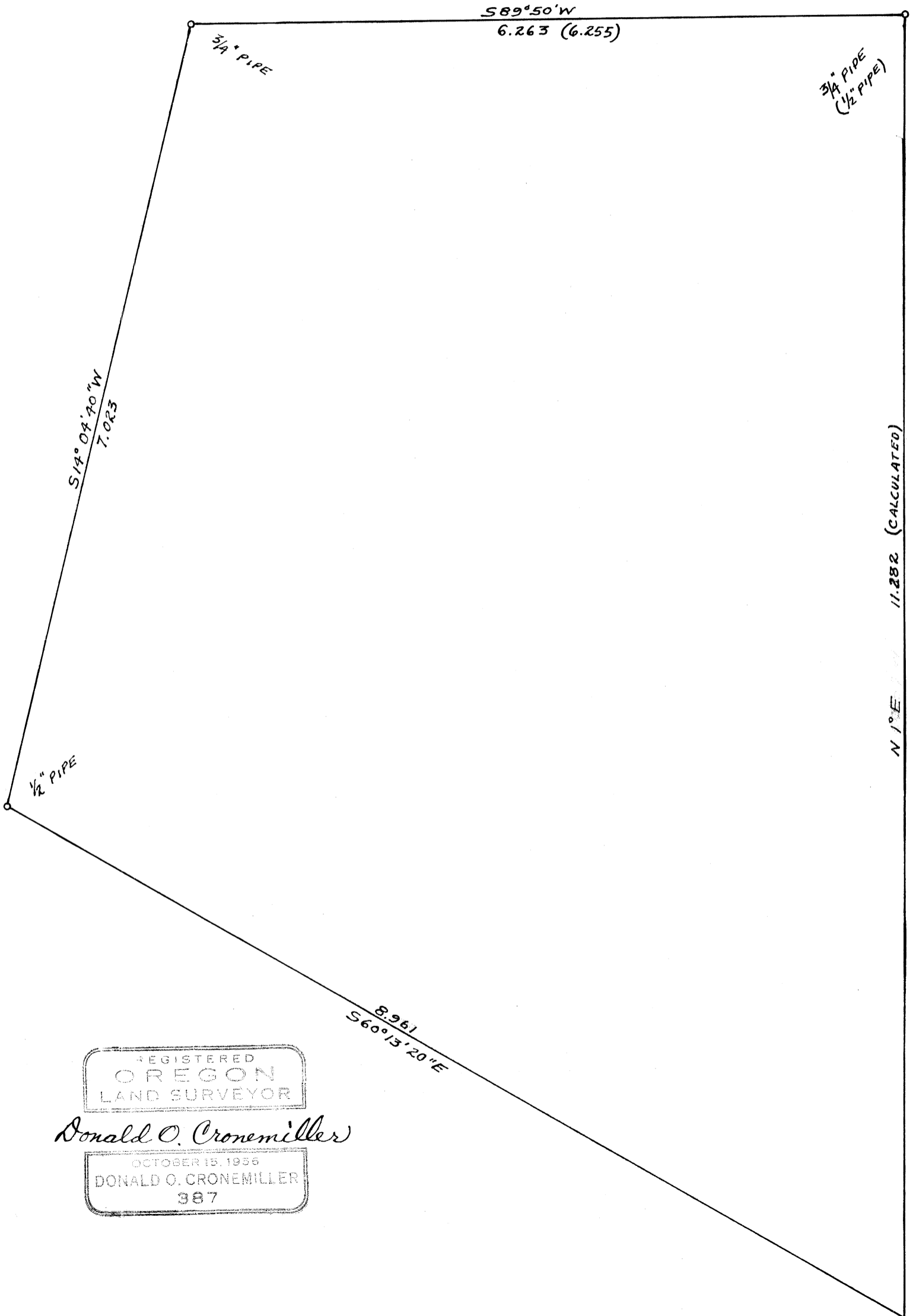


C.S. 3703

SURVEY FOR ROY E. & CLAIR E. HUDSON

SW 1/4 SEC. 10, T12S, R6W, W.M.

SCALE: 1 CHAIN = 1" 3/24/59



REGISTERED
OREGON
LAND SURVEYOR

Donald O. Cronemiller

OCTOBER 15, 1936
DONALD O. CRONEMILLER
387