

C.S. # 374

See notes in file

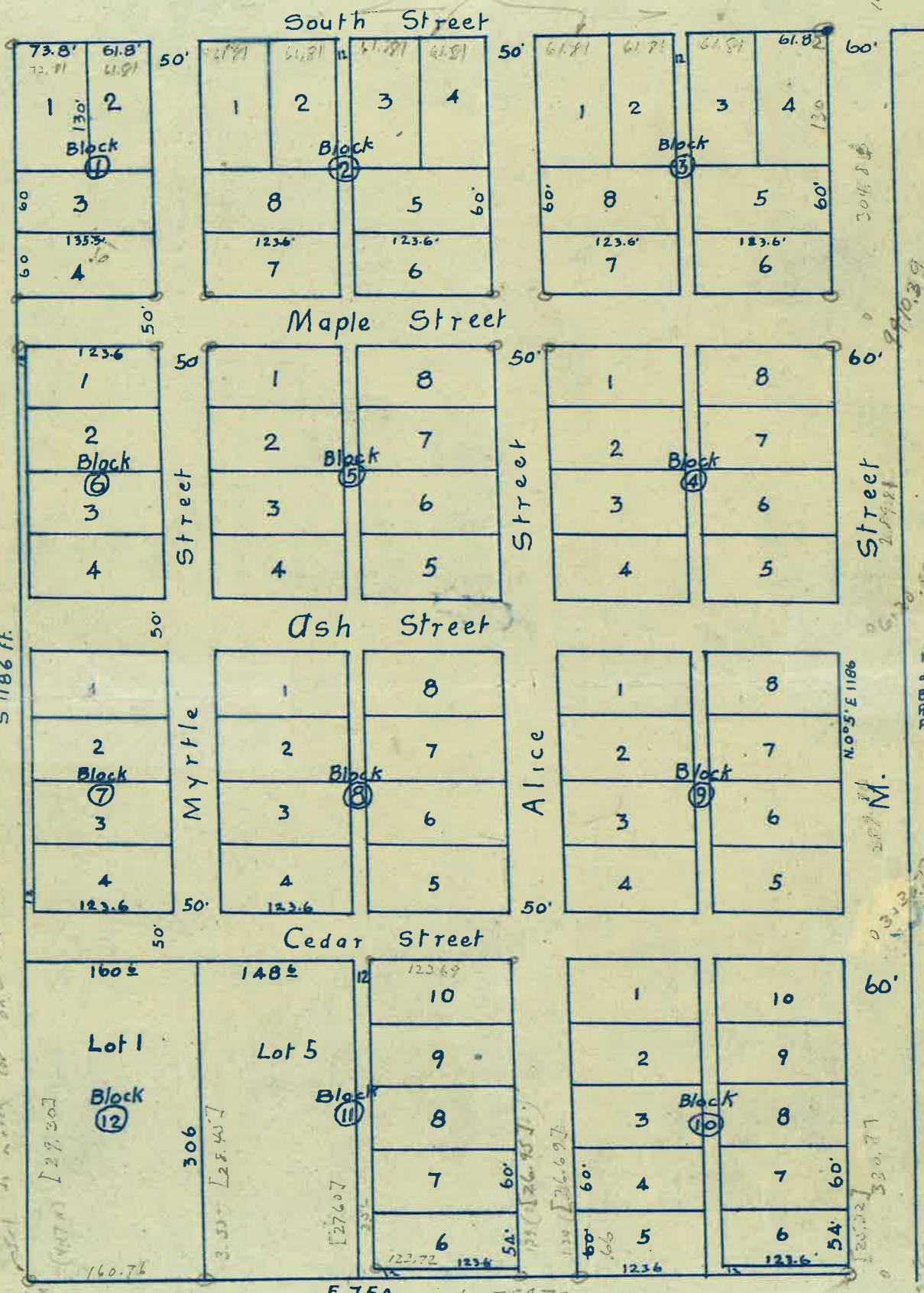
F.B.

374

W754

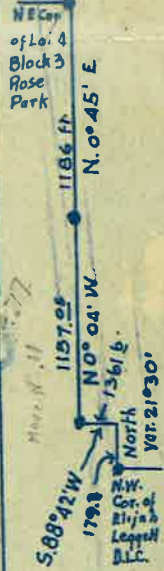
02 lots on E. South

14 15 20



5 1186 ft.

N. 0° 05' E 1186



Beginning at N.W. Cor. of The Elijah Lique D.L.C. Thence Running North. var. 21° 30' E. 179.20 ft. Thence S. 88° 42' W. 1361.6 feet. Thence N. 0° 04' W. 1137.05 ft. Thence N. 0° 05' E. 1186. ft. to a Stone monument at the N.E. Cor. of. Rose Park Subdivision