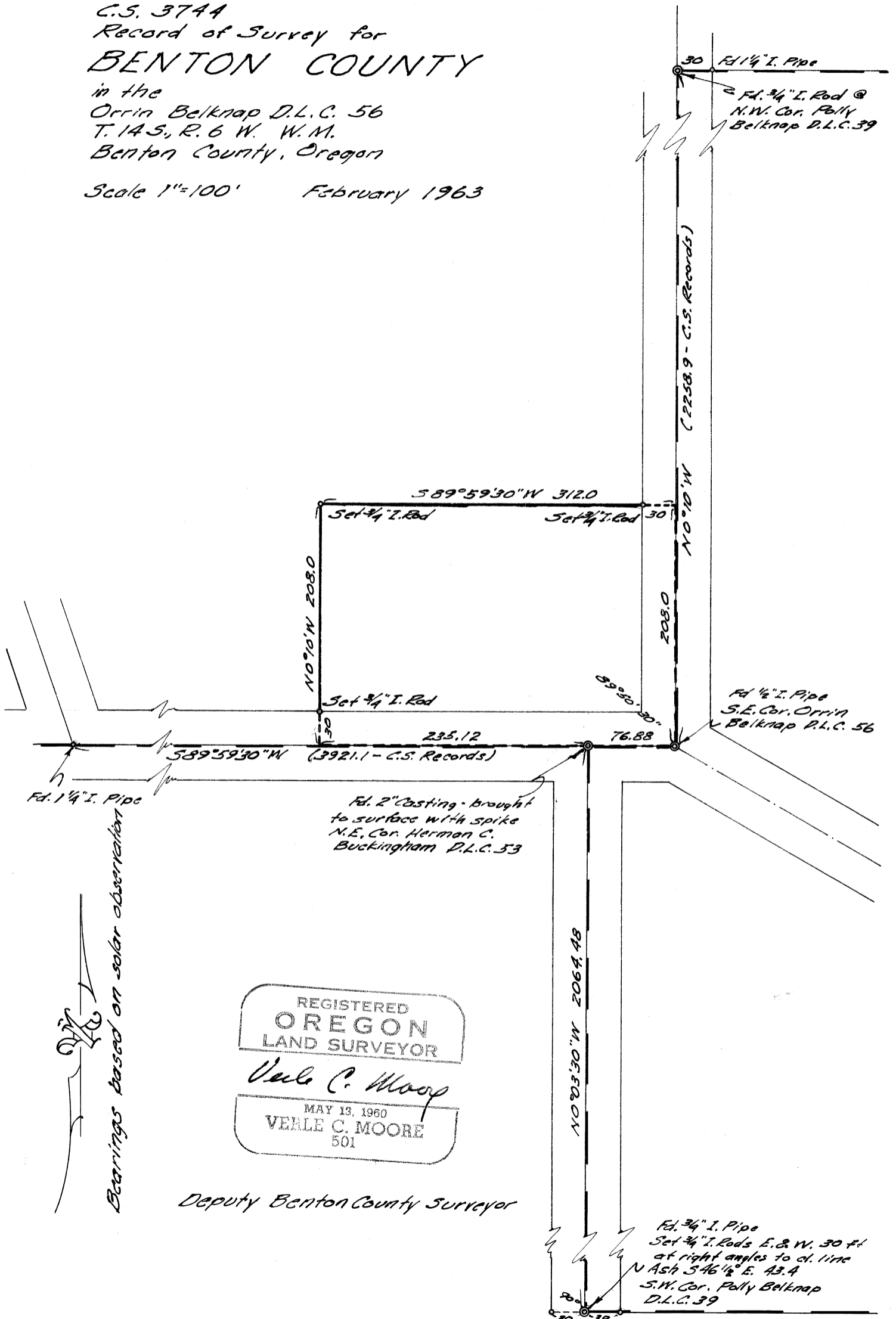


C.S. 3744
 Record of Survey for
BENTON COUNTY
 in the
 Orrin Belknap D.L.C. 56
 T. 14 S., R. 6 W. W.M.
 Benton County, Oregon

Scale 1"=100' February 1963



C.S. 3744

February 1963

V.C. Moore P.C.

N. Whitfield

R. Hartz

•

•

1/2 1/2

269-31.30
179-41
1 50 30

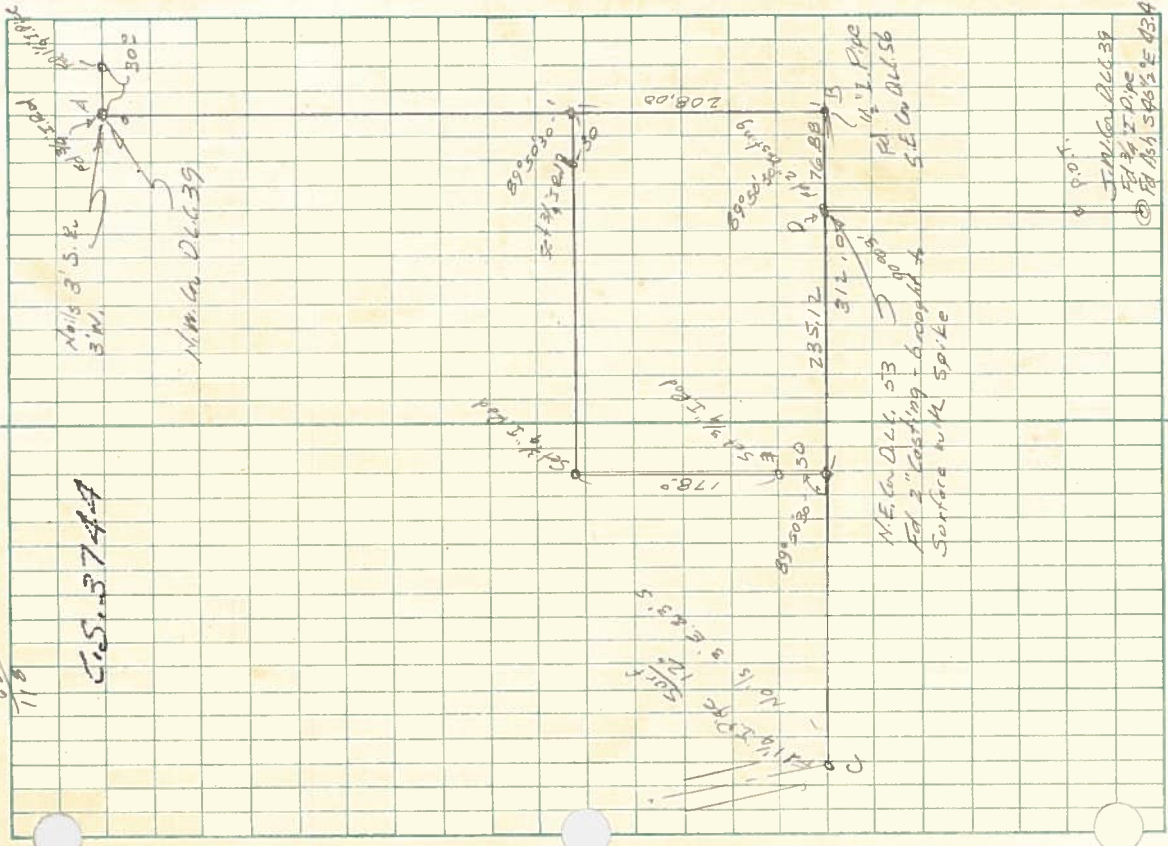
208
30
178
118

208
104
312

312.00
76.88
235.12

C.S. 3747

1415 3' S.E.
3' N.
N.W. 1/4 D.L. 53



P.O.F.

Int L1
90° 03' 30"

D 180° 06'

C 90° 03'

A

89° 51'

B 179° 41'

89° 50' 30"

C

Set of T.R. 30-30
@ 219 to line to N.

N.E. 1/4 D.L. 53
Fed 2" Casting + 6" roadway
Surface with Spike

N.W. 1/4 D.L. 53
Fed 2" Casting + 6" roadway
Surface with Spike

S.E. 1/4 D.L. 53
Fed 2" Casting + 6" roadway
Surface with Spike

S.E. 1/4 D.L. 53
Fed 2" Casting + 6" roadway
Surface with Spike

S.E. 1/4 D.L. 53
Fed 2" Casting + 6" roadway
Surface with Spike

Set of T.R. 30-30
@ 219 to line to N.