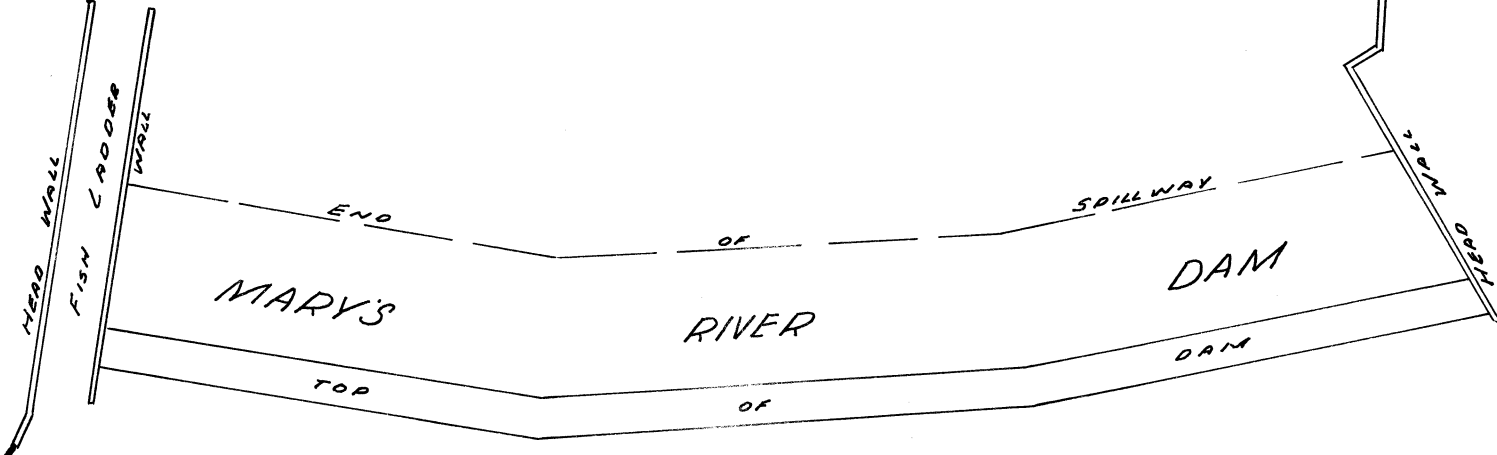


RIVER

North line book 125 page 454 Benton Co. Deeds
EAST



West Line J.C. Alexander Cl. 46
1983.3

MILL RACE
EASEMENT

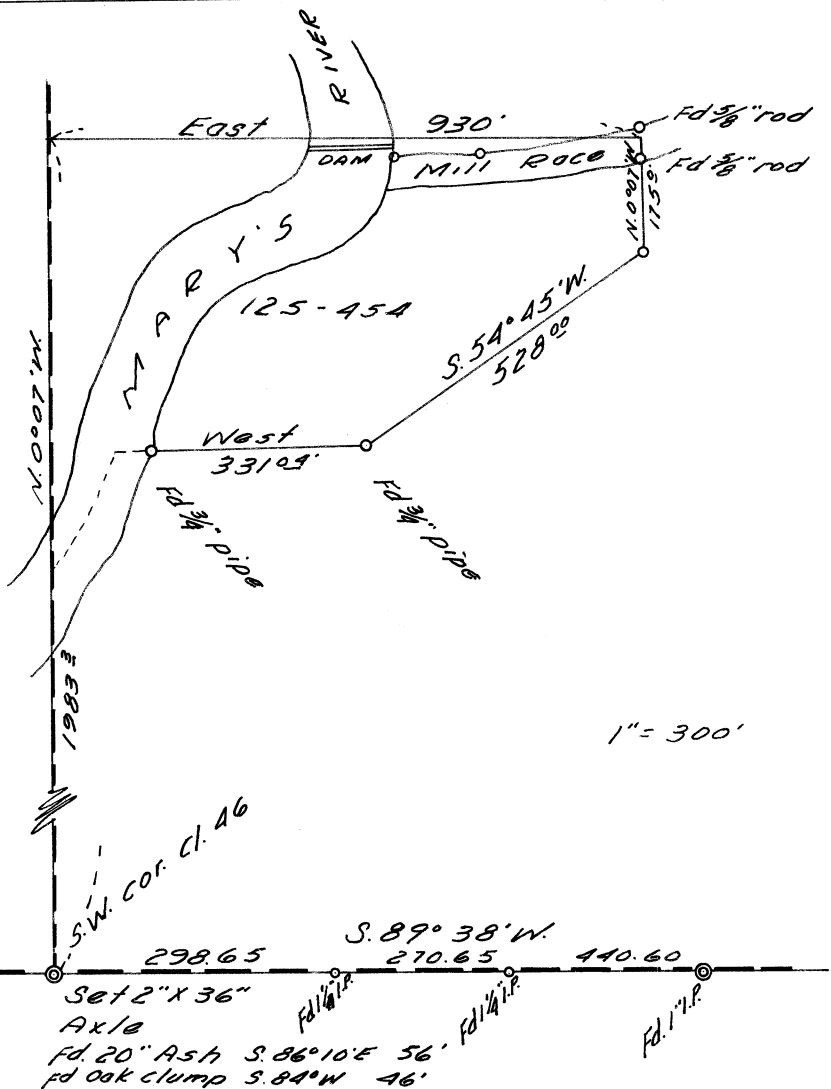
N. 89° 39' E 127.58'
Fd. 1/2" pipe Fd. 3/4" rod

MILL RACE

60 Feet
Easement

1" = 20'

MARY'S



1" = 300'

CS-3779
 RECORD OF SURVEY
 FOR
 CORVALLIS COUNTRY CLUB
 IN THE JOSEPH ALEXANDER CL. 46
 T. 12 S., R. 5 W., W.B.M.
 BENTON COUNTY, OREGON
 SURVEYED FEB. 1963

