

C.S. 3798

# VERNON JENNESS

SEC. 36, T. 10 S., R. 4 W., W.M.

BENTON CO., ORE.

Scale: 1" = 100'

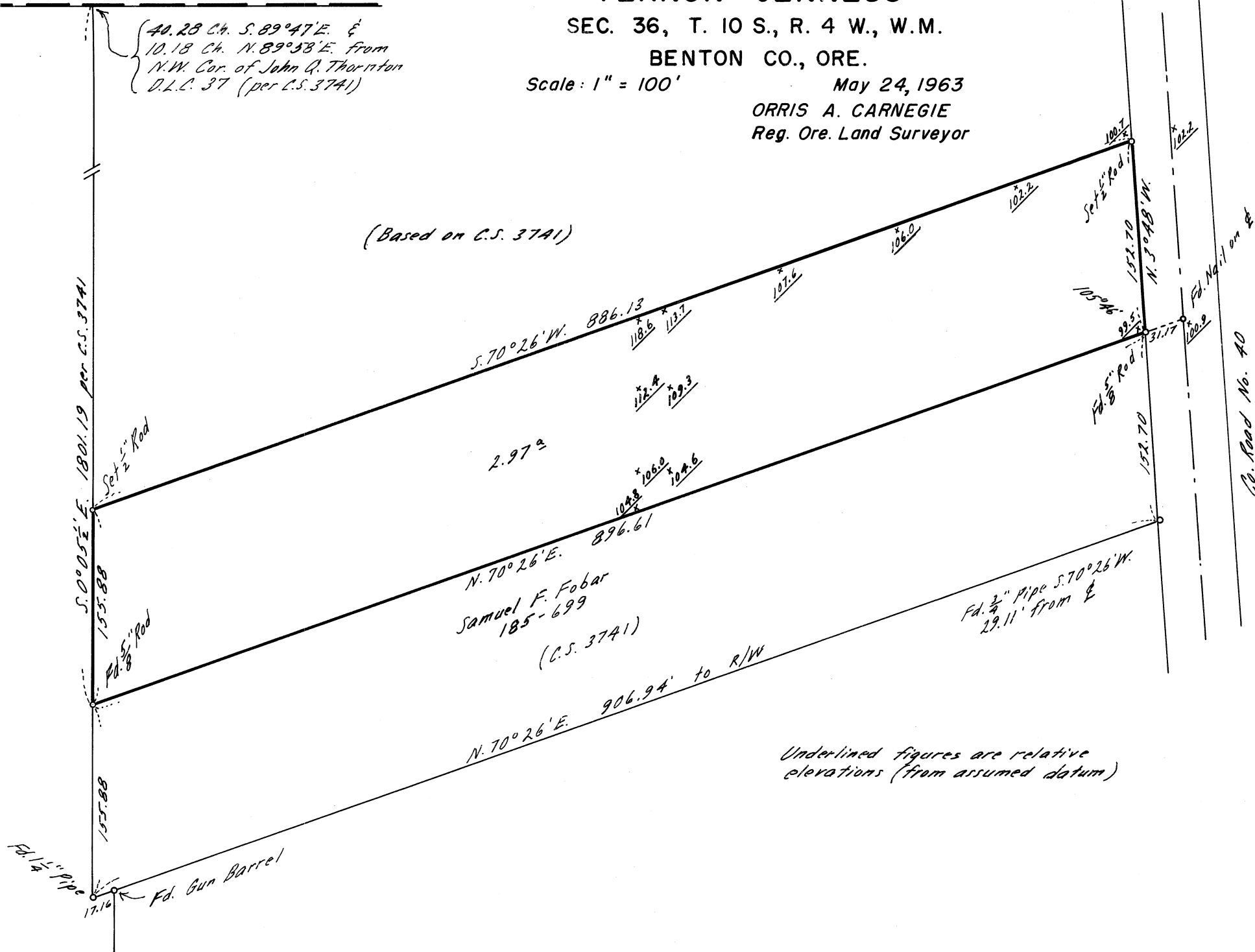
May 24, 1963

ORRIS A. CARNEGIE

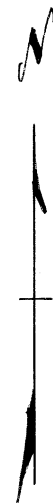
Reg. Ore. Land Surveyor

40.23 Ch. S. 89°47'E. &  
10.18 Ch. N. 89°38'E. from  
N.W. Cor. of John Q. Thornton  
D.L.C. 37 (per C.S. 3741)

(Based on C.S. 3741)



Underlined figures are relative elevations (from assumed datum)



REGISTERED  
OREGON  
LAND SURVEYOR

*Orris A. Carnegie*  
MAY 9, 1947  
ORRIS A. CARNEGIE  
213