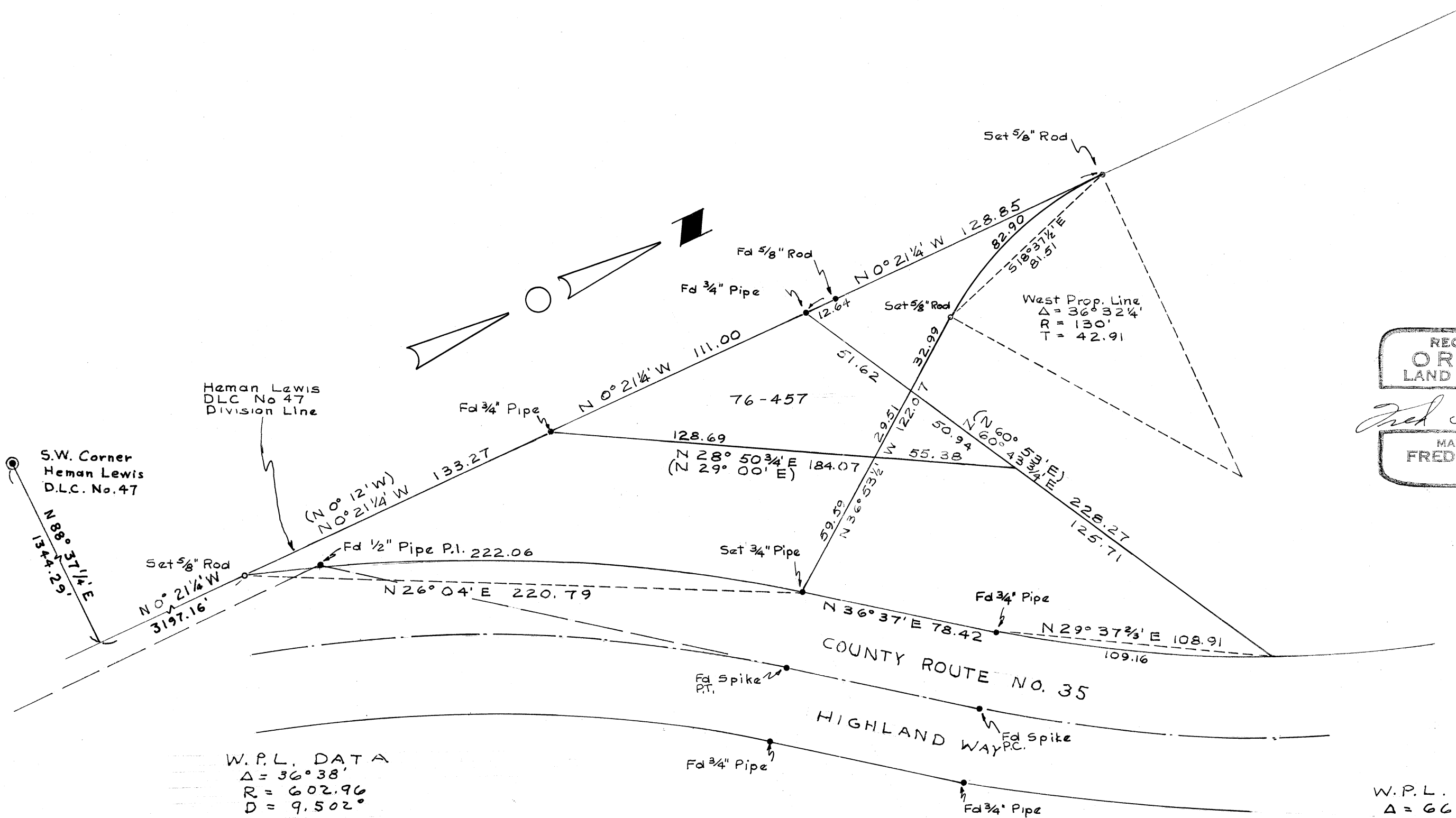


3811
C. S. 3811

SURVEY FOR B. N. WOODS
IN THE HEMAN C. LEWIS D. L. C. NO. 47
T11S, R5W, WILLAMETTE MERIDIAN
BENTON COUNTY, OREGON
SCALE 1" = 40' APRIL 18, 1961



REGISTERED
OREGON
LAND SURVEYOR

Fred I. Lemke

MAY 2, 1956
FRED I. LEMKE
443

W.P.L. DATA
 $\Delta = 36^\circ 38'$
 $R = 602.96'$
 $D = 9.502'$

W.P.L. DATA
 $\Delta = 66^\circ 56' 1/2"$
 $R = 447.46'$
 $D = 12.805'$