

3849

PLAN HOLD CORPORATION • IRVINE, CALIFORNIA
REORDER BY NUMBER 073AR

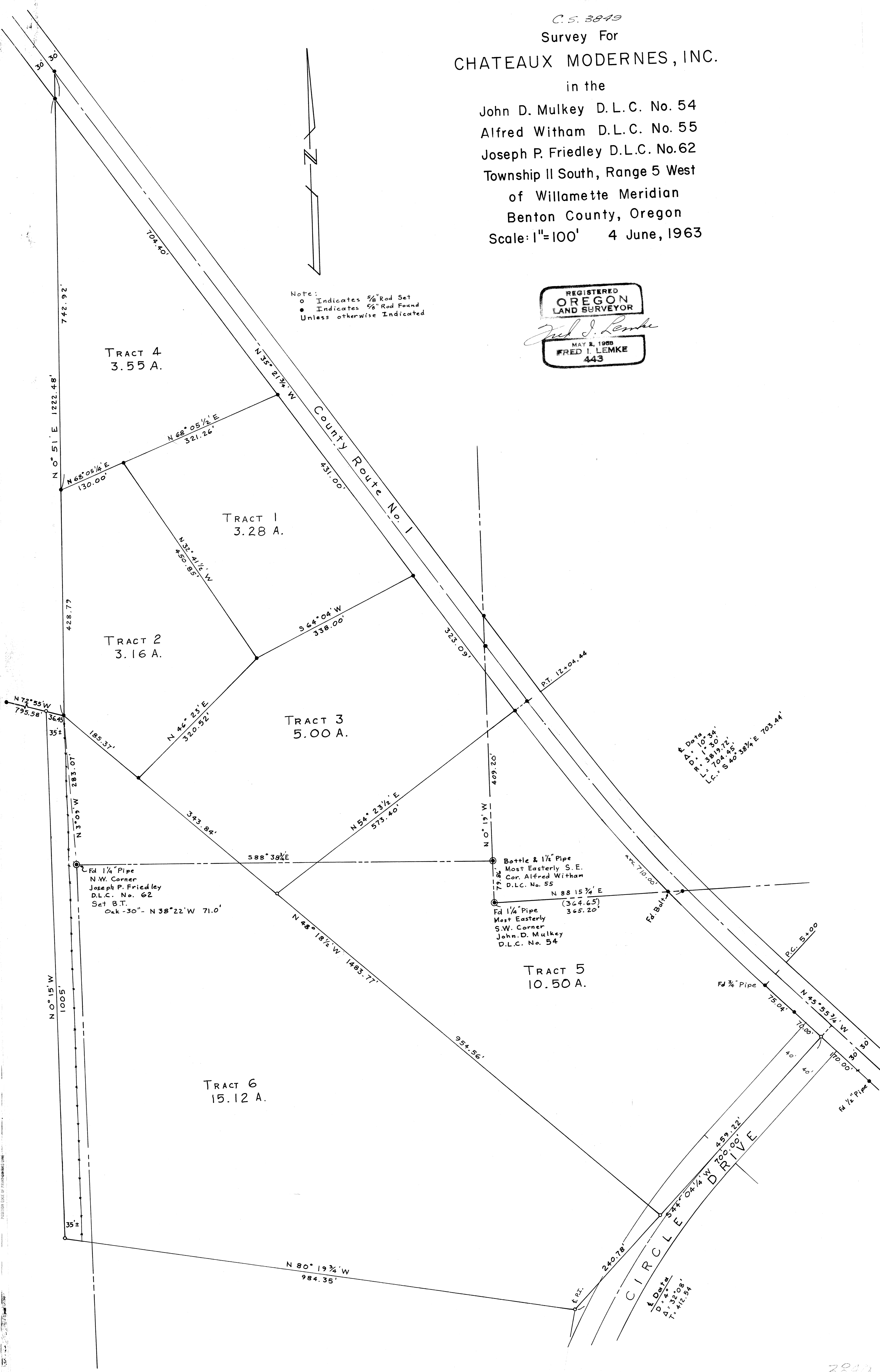
3849

PLAN HOLD CORPORATION • IRVINE, CALIFORNIA
REORDER BY NUMBER 073AR

C.S. 3849
Survey For
CHATEAUX MODERNES, INC.
in the
John D. Mulkey D.L.C. No. 54
Alfred Witham D.L.C. No. 55
Joseph P. Friedley D.L.C. No. 62
Township II South, Range 5 West
of Willamette Meridian
Benton County, Oregon
Scale: 1"=100' 4 June, 1963

REGISTERED
OREGON
LAND SURVEYOR
Fred I. Lemke
MAY 2, 1968
FRED I. LEMKE
443

Note:
o Indicates 5/8" Rod Set
• Indicates 5/8" Rod Found
Unless otherwise Indicated



& Data
D. = 100.34'
A. = 3819.72'
R. = 704.85'
LC. = S 40 38 1/4 E 703.44'

Bottle & 1/2" Pipe
Most Easterly S.E.
Cor. Alfred Witham
D.L.C. No. 55
Fd 1/4" Pipe
Most Easterly
S.W. Corner
John D. Mulkey
D.L.C. No. 54

Fd 1/4" Pipe
N.W. Corner
Joseph P. Friedley
D.L.C. No. 62
Set B.T.
Oak - 30" - N 38° 22' W 71.0'

& Data
D. = 412.54'
A. = 32.08'
T. = 412.54'

3849