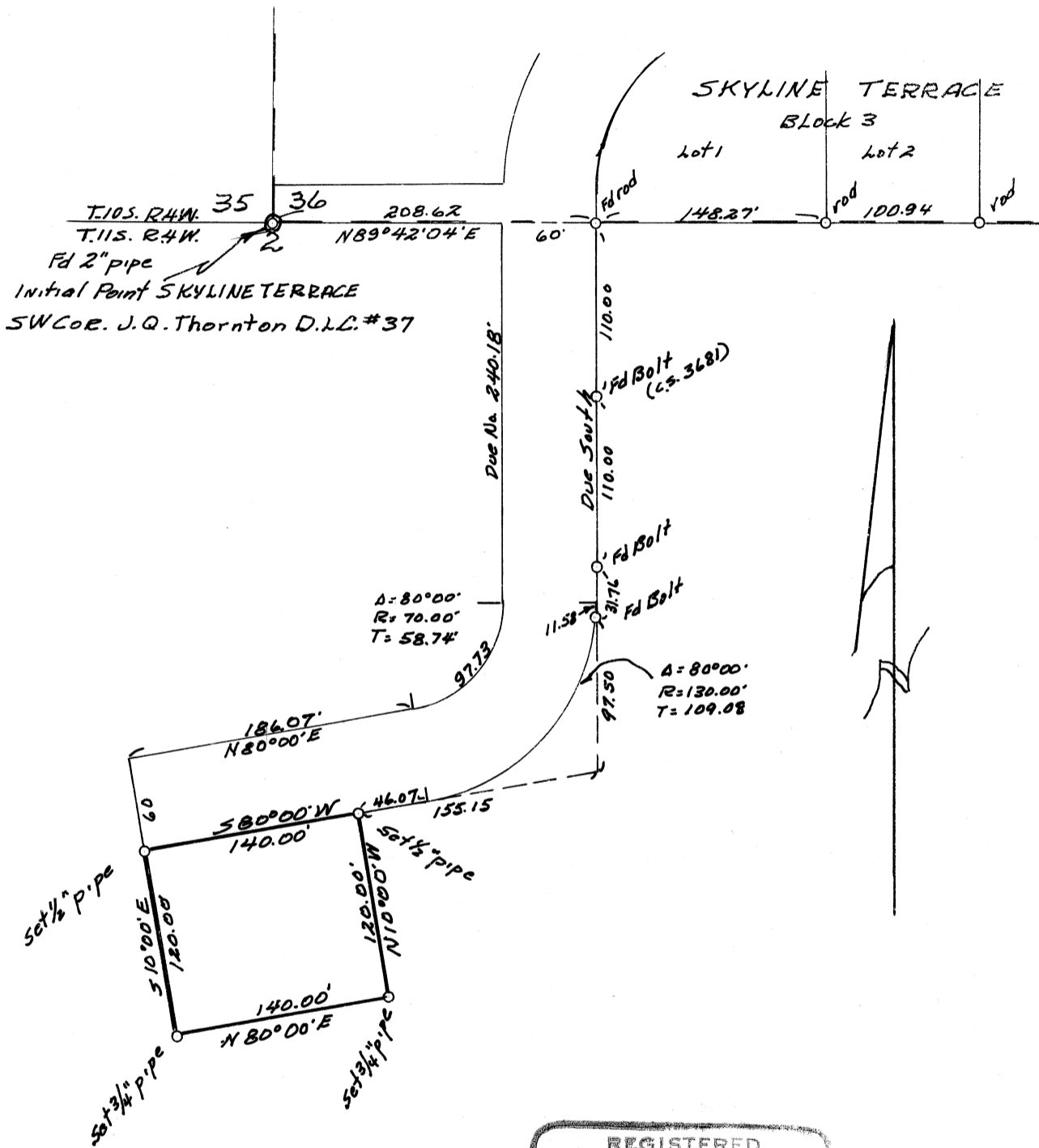


CS. 3855  
 G.F. CHARTRAW  
 SEC. 2, T.11S., R.4W., W.M.  
 BENTON COUNTY, ORE.  
 Scale 1"=100' Dec, 1963



REGISTERED  
 OREGON  
 LAND SURVEYOR

*B. Osburn Shaw*

OCTOBER 4, 1957  
 B. OSBURN SHAW  
 431