

C. S. 3858

Record of Survey
for

KAY KOWALSKI

in the

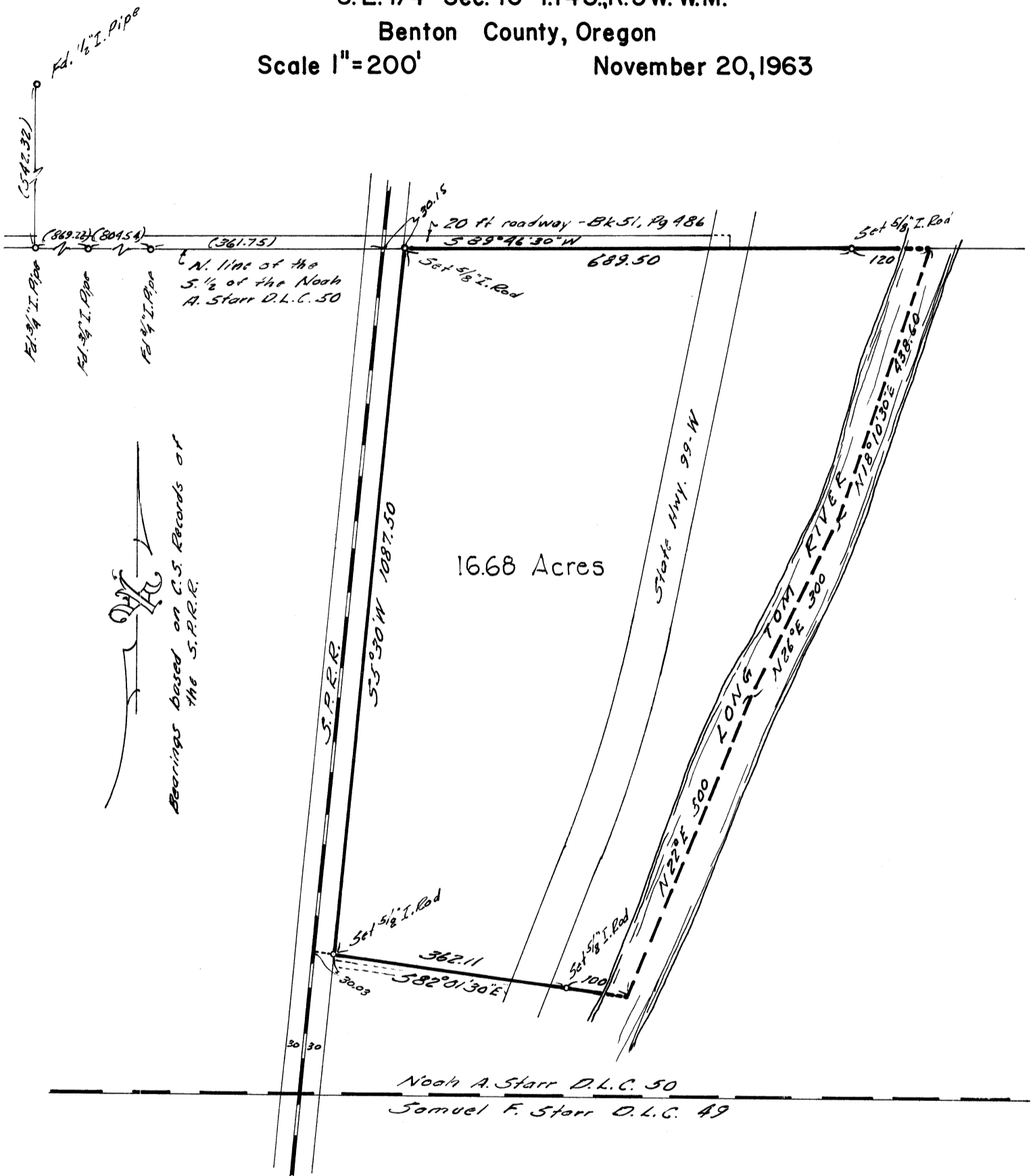
Noah A. Starr D.L.C. 50

S.E. 1/4 Sec. 16 T.14S., R.5W. W.M.

Benton County, Oregon

Scale 1"=200'

November 20, 1963



REGISTERED
OREGON
LAND SURVEYOR

Verle C. Moore

MAY 13, 1960
VERLE C. MOORE
501