

400

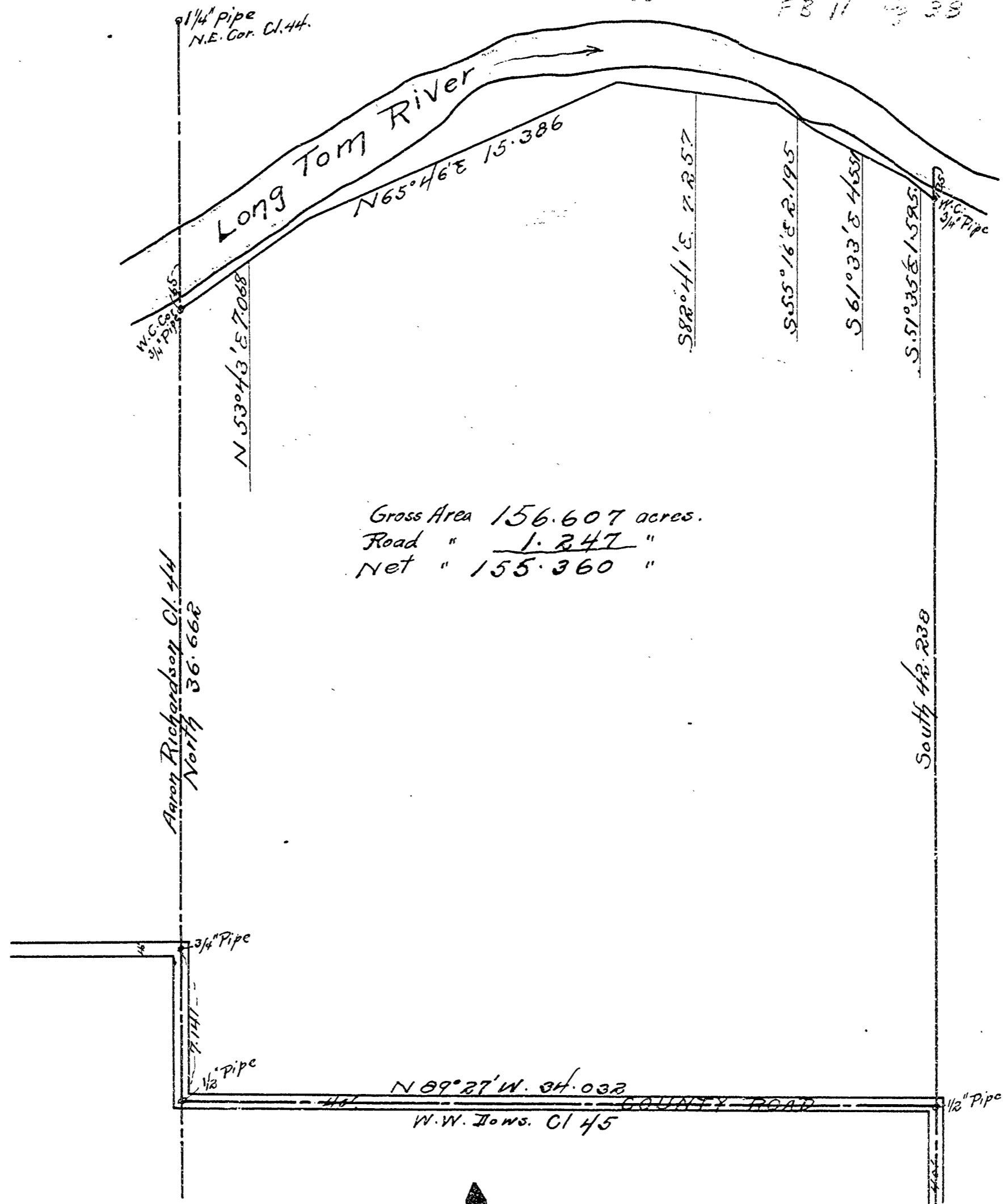
400

COUNTY SURVEY No. 201.

For
 H. C. Herron et al.
 Sec. 10, T. 14 S., R. 5 W., W. M.
 Scale 1" = 5 Chs.
 Oct. 20, 1913 by F. Maria Wilkes
 E 1915.

400

FB 11 23



Gross Area 156.607 acres.
 Road " 1.247 "
 Net " 155.360 "



FB#11 CS 400

38 ²¹/₂ ²³/₃ Survey RO1 for Probt +
 Beg at T. W. Thomas et. 45 ft 14/5

589° 13' E on N line from

#400

By of
 Chas
 17.00
 67.87
 2
 13
 W
 D.C.

3 1/2 W. D.C. — 19.557 5.557
 + 6.698
 7.759 254
 + .018
 Shaking S. of 1/2 pipe 231 - W.C.

to top of track to 0 → fence north 7.141
 5 23.090 ¹²⁹

6 on S. bank Long Tom 6.500
 Water to S bank creek + .65

- across - 3.75
 7 — 5.080

8 — 4.391
 9 Near Cor. 3.988
 + .001

Sib 3/4" at #117 ^{550° W} ash 10' N56° 30' E 33.5 ft
 " 6" N34° W 27.9 ft

Back to 46. fence N53° 43' E — 2.89 = N to creek 29 ft
 " 17 1/4 ft 5.44 = N 20'
 10 Width of stream = " 6.951 = N .34

N 65° 46' E 2.59 N 48 ft
 180-wire " 4.72 = N 64 ft

11 Near 102 ft " 7.00 N 134
 C.A. N 65° 46' " 8.748 N 202
 2.14 N 211

Clayton Ferry Oct 17, 1913
 is 1/2 pipe at Walters Press. Co. W. E. Thomas.

2000		19.5570
302	8° 13'	6.6980
6.698	73	7.7591
.00678 = Tan 23°	²³ / ₁	.0180
36.682	^{81° 13'} / ₂₃	34.0326
231.000	7.141	7.14152
204.192	25.200	23.09032
268080	14.382	6.5000
238224	3579	36.7310
298560	509	5.0807
36.731	272256	4.3911
75200	263040	3.9884
	100257 = Tan 9°	50.0703
73462		7.141
18345	50.07	12.927
2571	129000	
	12014	
	22860	
094399	25036	
	38250	

Trees marked 17 / 13.386

39

	Cont. W. 146'	5.58	N. 92'
12	65° 46' E	6.638	N 43.4'
13	58° 41' E	3.105	N 70'
	" "	2.53	N 50'
14	" "	4.152	N 12'
	S 55° 16' E - N 6' wide	4.152	N 12'
15	" "	2.199	N 25'
1	58° 33' E	1.77	N 27.1'
16	56° 33' E 100' wide	4.55	N 12.4'
17	55° 35' E - 41° 46'	1.481	N 29.4'
	Set 3/4" pipe for W.C. 70' 50'	2.10	
	Riv. 2.12' from bank 150' on line	4.02	= 89.5'
18	thru South	4.453	✓
19		3.684	✓
20		20.554	6.534
	S 35' E to A.B.	6.545	✓
	striking plat. 290		

Set W.C. S 59° 35' E .114

Time 2 days to
 Oakes Plats etc. \$1.50
 Paid \$1.50

2.199

31.899

19.791

1.979

1.75

2

2.1947

890

28

24

20.331

15.139

5.192

3.105

4.152

7.257

4.453

10.686

15.139

20.554

6.545

42.239

1.356

43.595

37

22.1

2.2