

C.S. 4016  
**DARRELL CLEVELAND**  
 IN J.Q. THORNTON D.L.C. #37  
 SE 1/4 SEC. 36, T.10S., R.4W.W.M.  
 NE 1/4 SEC. 1, T.11S., R.4W.W.M.  
 Scale 1" = 100' January, 1965

NW Cor J.Q. Thornton  
 D.L.C. #37

(E. 40.28 ch)  
 (2658.49')

49 chs = 3234.00'

(South)

N70°26'E  
 27.34 chs =  
 1804.44'

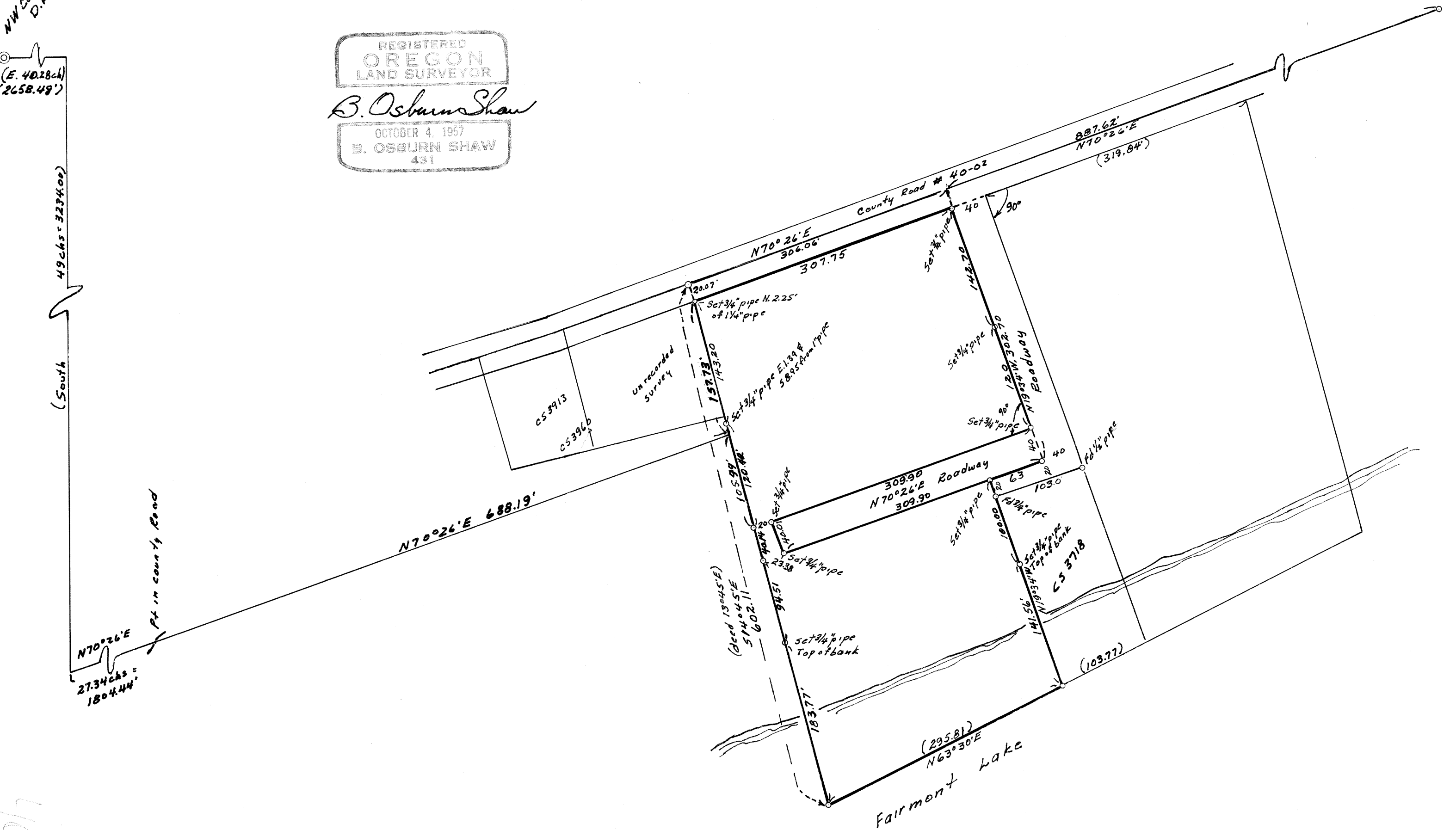
Pt in county road

REGISTERED  
**OREGON**  
 LAND SURVEYOR

*B. Osburn Shaw*

OCTOBER 4, 1957  
 B. OSBURN SHAW  
 431

For 38' rod  
 C.S. 3960



4016