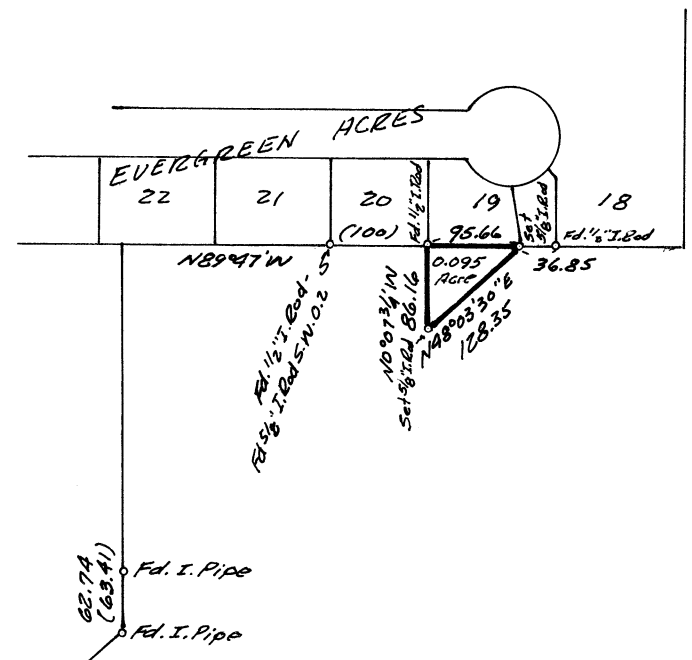
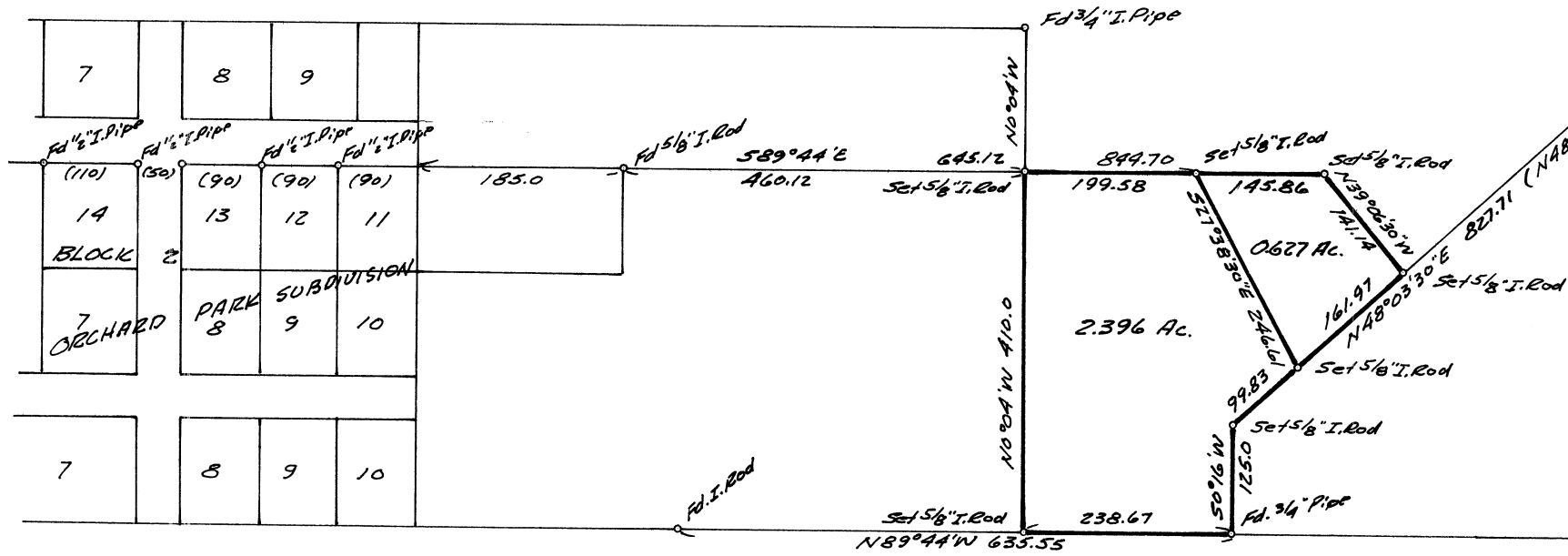


C 5 4109
 Record of Survey
 for
CHESTER F. HUGHSON
 in the
 S.E. 1/4 Section 31, T.10S.,R.3W. W.M.
 Benton County, Oregon
 Scale 1"=200' June 17, 1965

*Parentheses denote information
 from C.S. Records.*

*Bearings from the N. line of Block 2 of
 Orchard Park Sub and the S. line of
 Evergreen Acres.*



REGISTERED
OREGON
 LAND SURVEYOR
Verle C. Moore
 MAY 13, 1960
VERLE C. MOORE
 501