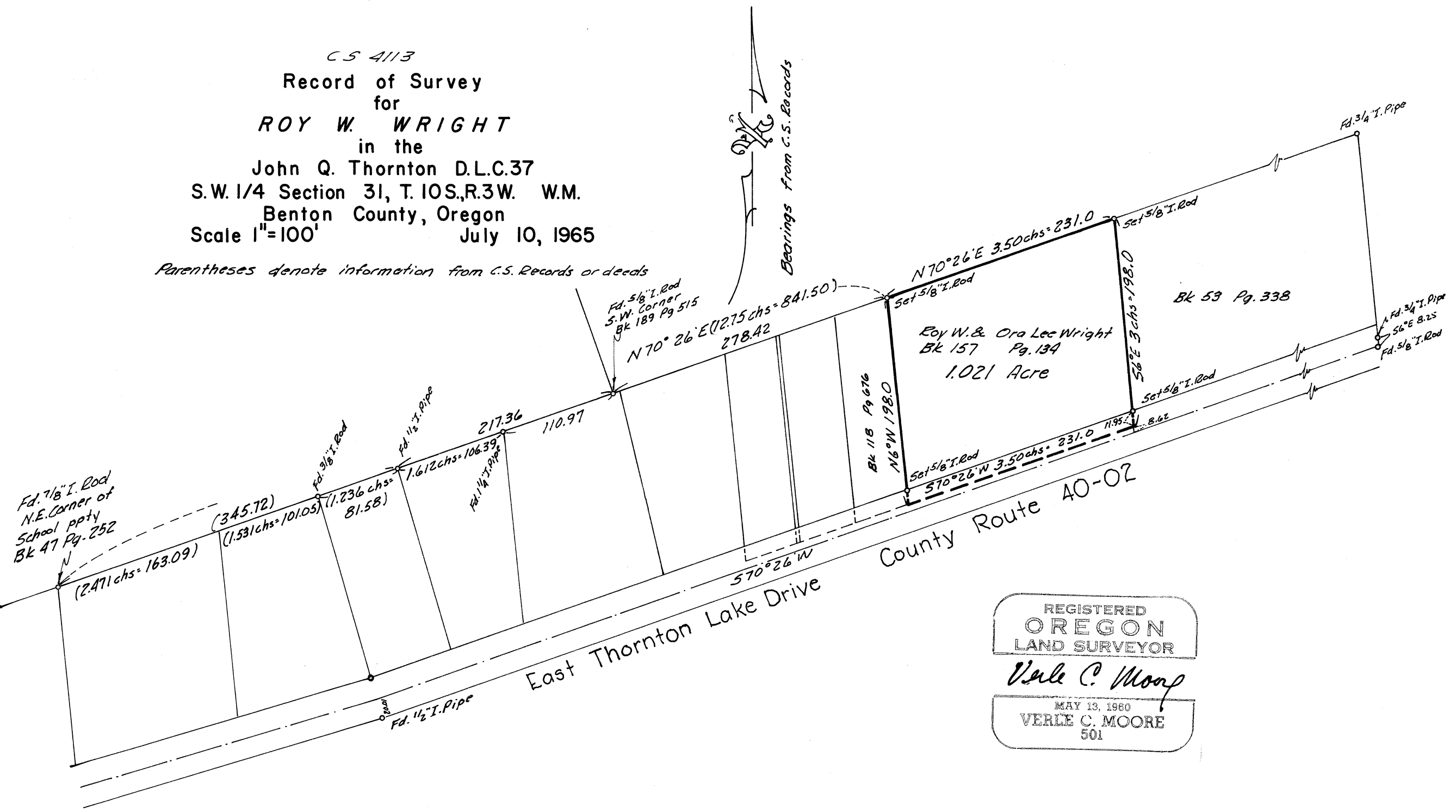


CS 4113
 Record of Survey
 for
ROY W. WRIGHT
 in the
 John Q. Thornton D.L.C.37
 S.W. 1/4 Section 31, T.10S.,R.3W. W.M.
 Benton County, Oregon
 Scale 1"=100' July 10, 1965

Parentheses denote information from C.S. Records or deeds



Bearings from C.S. Records

Fd. 7/8" I. Rod
 N.E. Corner of
 School ppty
 Bk 47 Pg. 252

Fd. 5/8" I. Rod
 S.W. Corner
 Bk 189 Pg 515

Bk 59 Pg. 338

Roy W. & Ora Lee Wright
 Bk 157 Pg. 134
 1.021 Acre

Fd. 3/4" I. Pipe
 56°E 8.25
 Fd. 5/8" I. Rod

County Route 40-02
 East Thornton Lake Drive

REGISTERED
OREGON
 LAND SURVEYOR
Verle C. Moore
 MAY 13, 1960
VERLE C. MOORE
 501