

DORVAL BEVENS

DAVID HENDERSON D.L.C. #58 & ALFORD HENSON D.L.C. #67
SECTIONS 11 & 14, T12S, R6W, W.M.
BENTON COUNTY, OREGON

SCALE 1" = 660 FT.
BASED ON C.S. 144
AND C.S. _____
(DATED MAY, 1962)
JULY 20, 1965

BERT W. LIDELL
by HOWARD E. TAYLOR
REG. ENGRS.

ACREAGE SUMMARY:
COUNTY ROAD R/W 10.9
UNIMPROVED BRUSH 7.52
CLEARED 15.58
TOTAL ACRES ± 21.14

S.E. COR.
LWM MATZGER
DLC #50

11 12
14 13

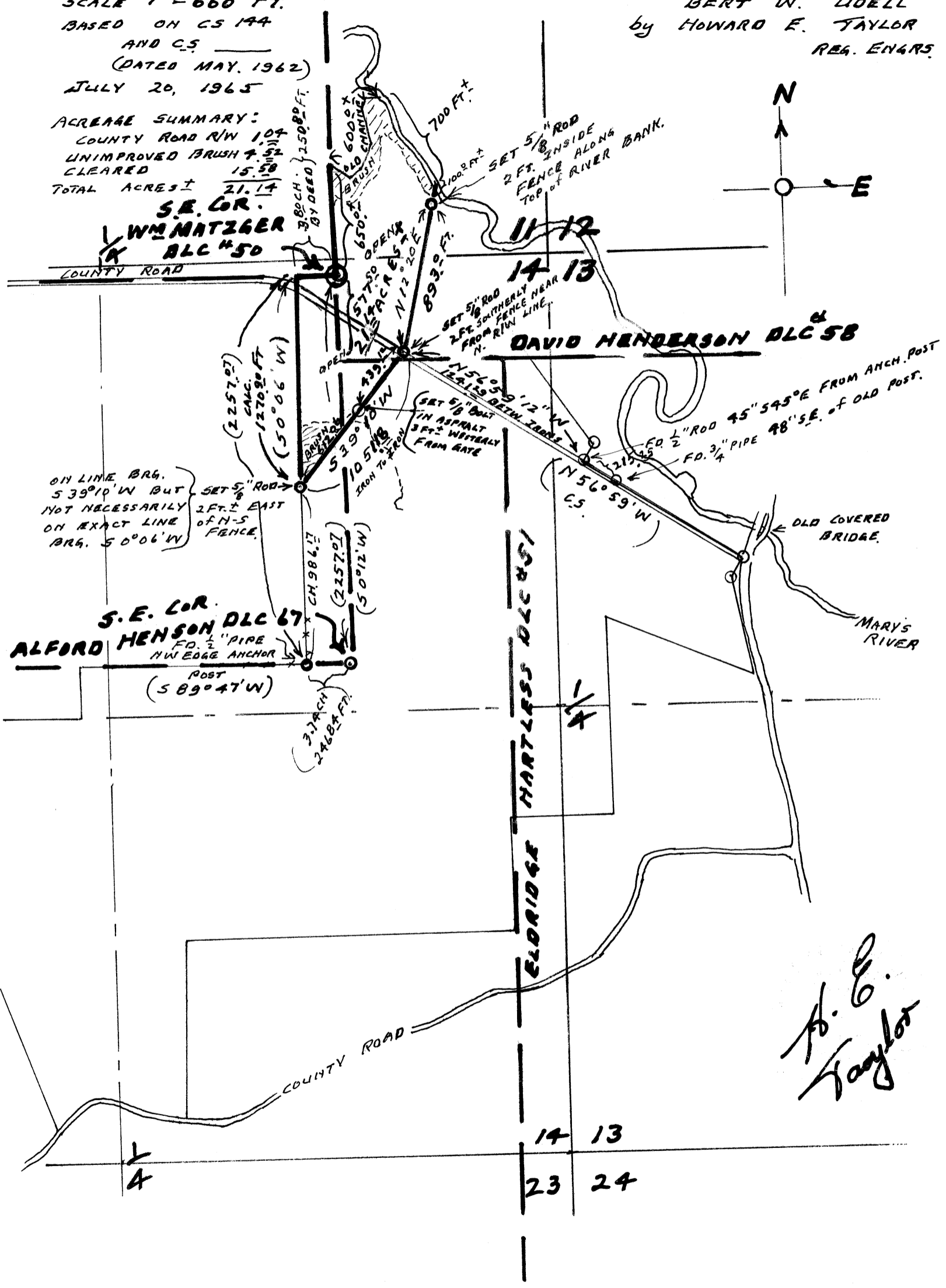
DAVID HENDERSON DLC #58

S.E. COR.
ALFORD HENSON DLC #67
FO. 1/2" PIPE
NW EDGE ANCHOR
POST
(589°47'W)

ELDRIDGE HARTLESS DLC #51

14
4

14 13
23 24



H. E. Taylor