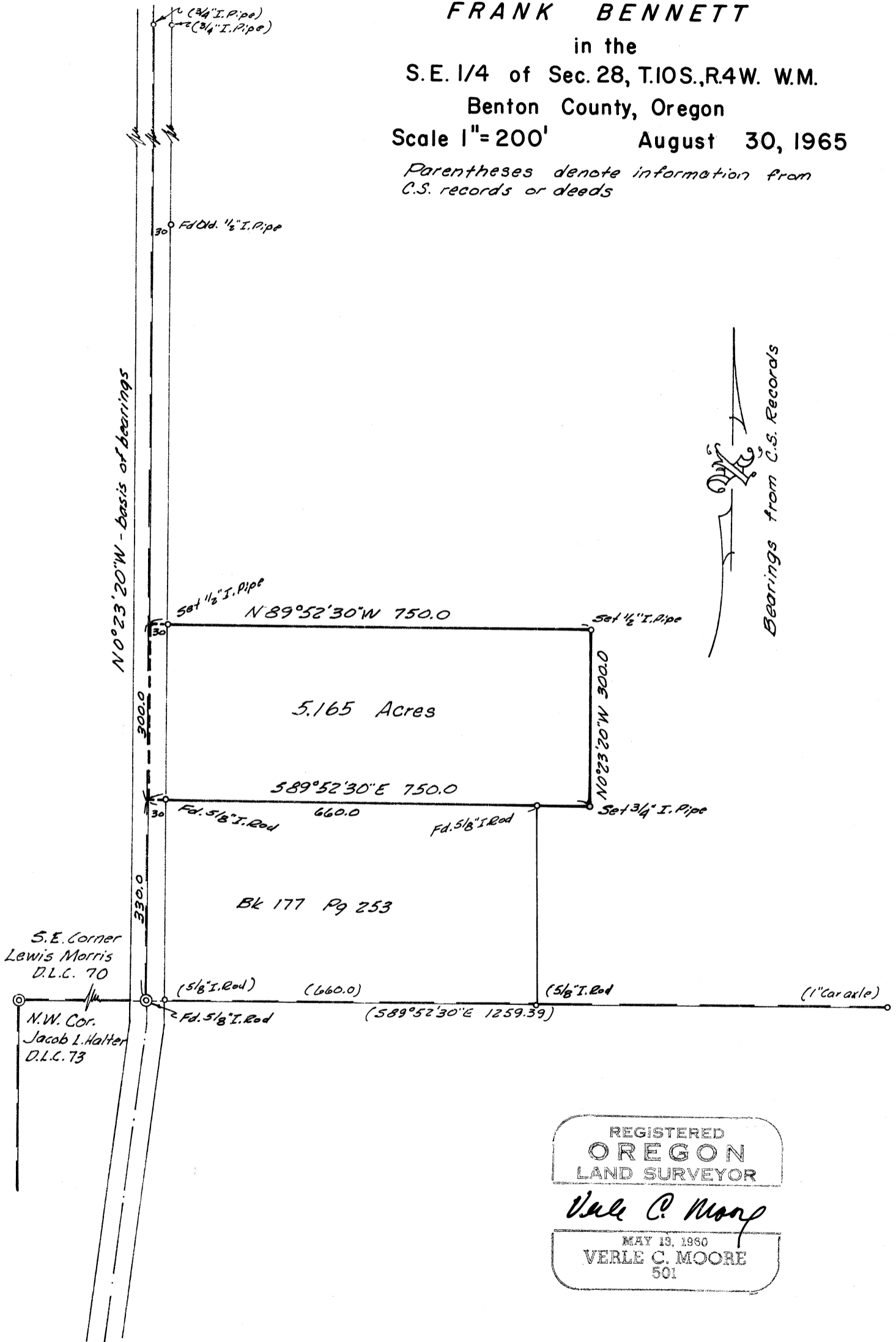


C.S. 4140
 Record of Survey
 for
FRANK BENNETT
 in the
 S.E. 1/4 of Sec. 28, T.10S., R.4W. W.M.
 Benton County, Oregon
 Scale 1" = 200' August 30, 1965
*Parentheses denote information from
 C.S. records or deeds*



REGISTERED
OREGON
 LAND SURVEYOR
Verle C. Moore
 MAY 13, 1960
VERLE C. MOORE
 501