

4175

4175

$\Delta = 101.045'$
 $R = 130.45$
 $T = 160.10$

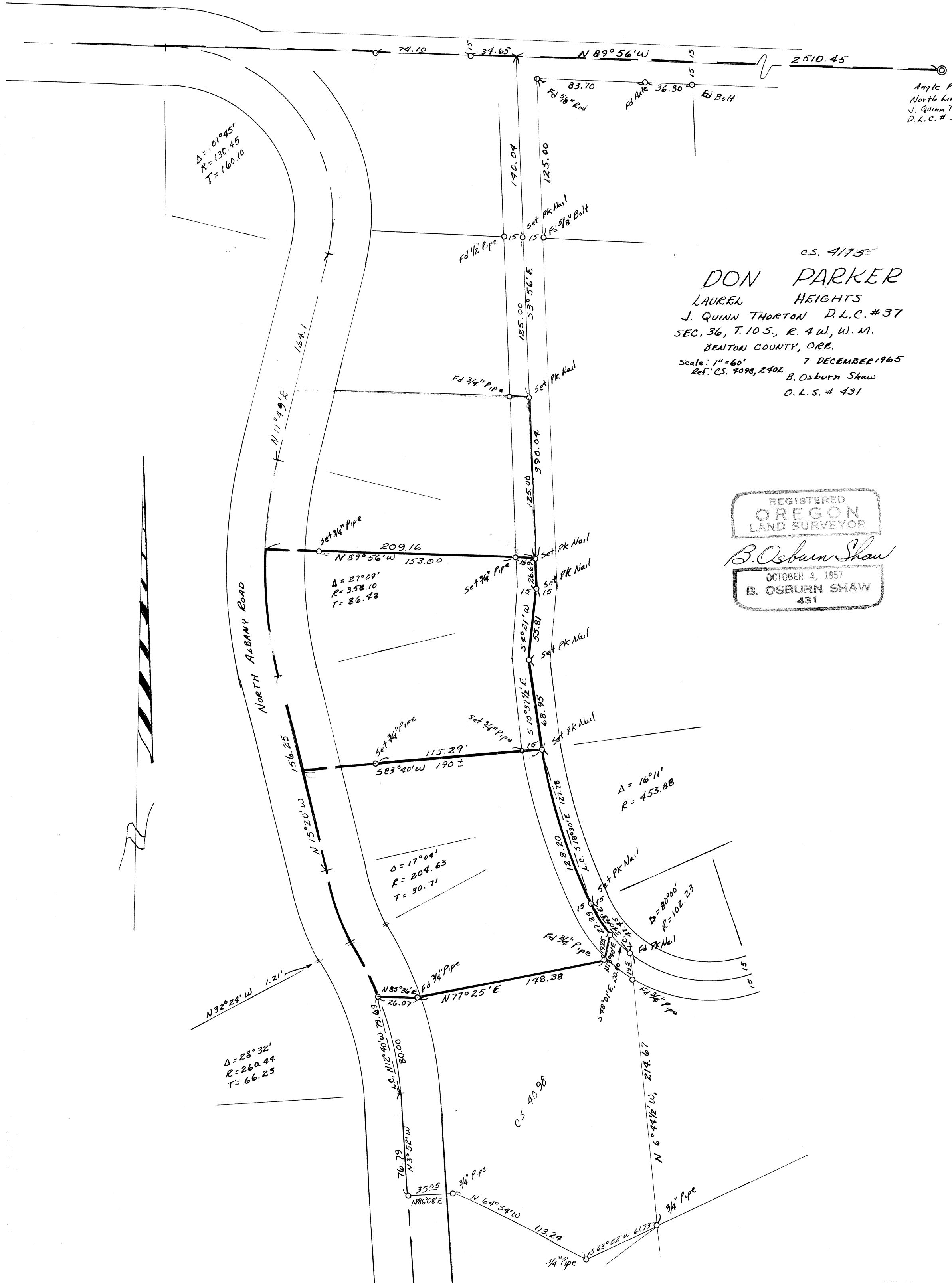
Angle Point in
North line of
J. Quinn Thornton
D.L.C. # 37

c.s. 4175
DON PARKER
LAUREL HEIGHTS
J. QUINN THORNTON D.L.C. # 37
SEC. 36, T. 10 S., R. 4 W., W. M.
BENTON COUNTY, ORE.
Scale: 1" = 60'
Ref. C.S. 4098, 2402 B. Osburn Shaw
D.L.S. # 431

REGISTERED
OREGON
LAND SURVEYOR

B. Osburn Shaw

OCTOBER 4, 1957
B. OSBURN SHAW
431



$\Delta = 28.32'$
 $R = 260.44$
 $T = 66.25$

$\Delta = 17.04'$
 $R = 204.63$
 $T = 30.71$

$\Delta = 16.11'$
 $R = 453.88$

$\Delta = 80.00'$
 $R = 102.23$

4175