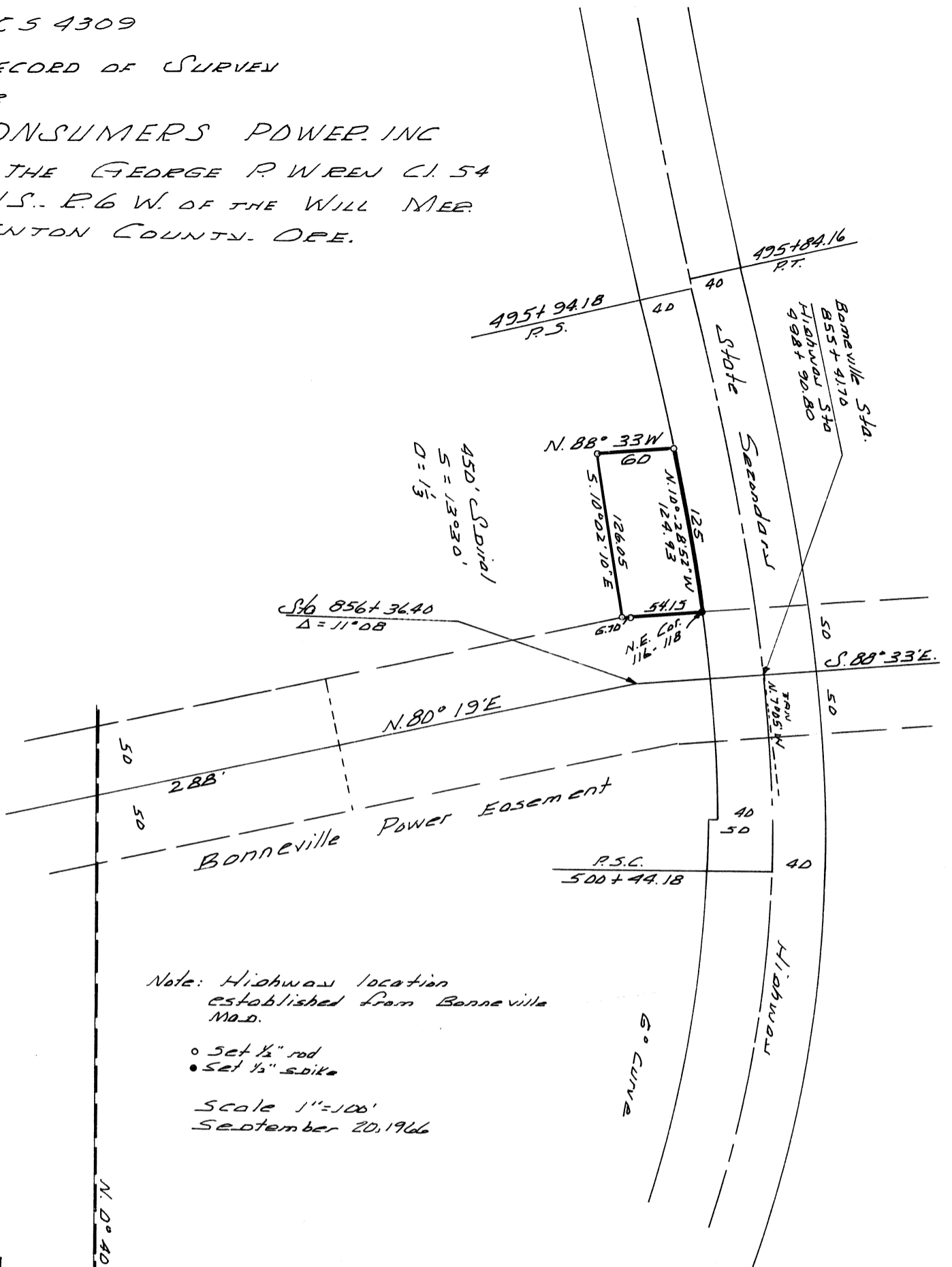


C 5 4309

RECORD OF SURVEY
FOR
CONSUMERS POWER, INC
IN THE GEORGE P WREN C. 54
T. 11 S., R. 6 W. OF THE WILL MER.
BENTON COUNTY, ORE.



Note: Highway location established from Bonneville Map.

- Set 1/2" rod
- Set 1/2" spike

Scale 1"=100'
September 20, 1966

REGISTERED
OREGON
LAND SURVEYOR

Richard W. Fail

NOV. 4, 1955
RICHARD W. FAIL
357

GEORGE P WREN D.L.C. NO. 54