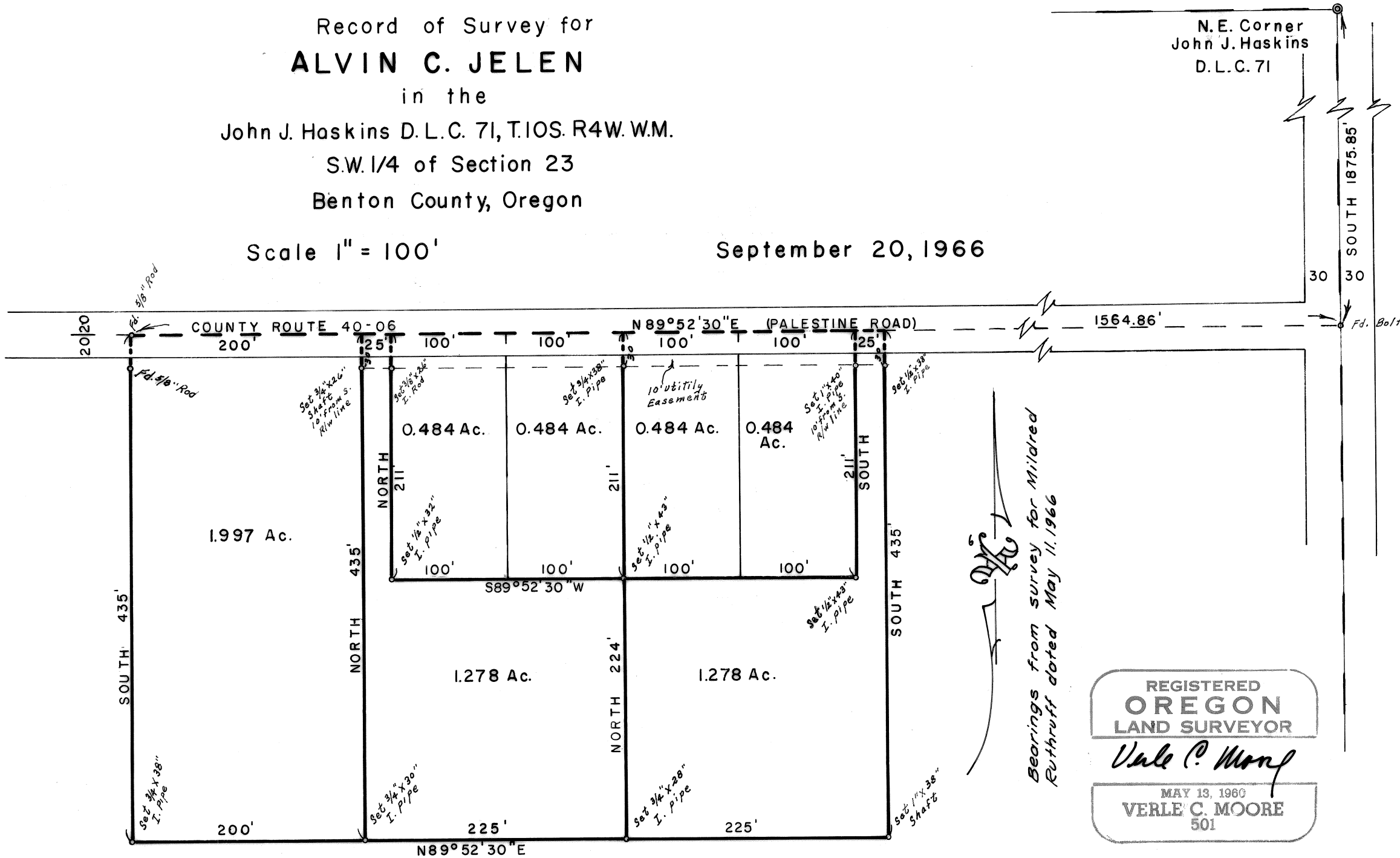


C. S. 4324

Record of Survey for  
**ALVIN C. JELEN**  
in the  
John J. Haskins D.L.C. 71, T.10S. R4W. W.M.  
S.W. 1/4 of Section 23  
Benton County, Oregon

Scale 1" = 100'

September 20, 1966



REGISTERED  
**OREGON**  
LAND SURVEYOR

*Verle C. Moore*

MAY 13, 1960  
**VERLE C. MOORE**  
501