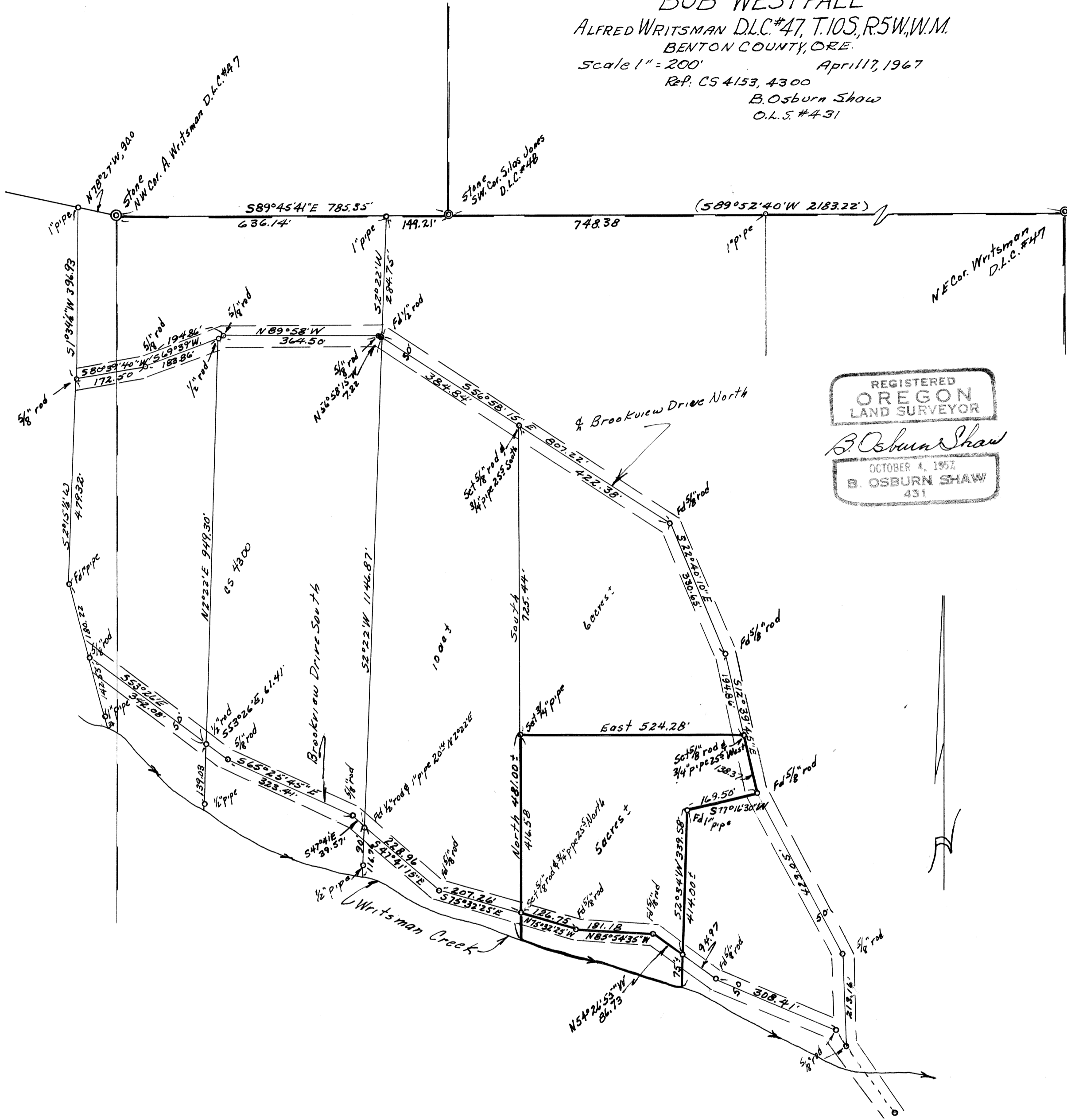


CS 4375
BOB WESTFALL
 ALFRED WRITSMAN D.L.C.#47, T.10S, R.5W, W.M.
 BENTON COUNTY, ORE.
 Scale 1" = 200' April 17, 1967
 Ref: CS 4153, 4300
 B. Osburn Shaw
 O.L.S. #431



REGISTERED
OREGON
 LAND SURVEYOR

B. Osburn Shaw

OCTOBER 4, 1957
B. OSBURN SHAW
 431