

C. S. 4381  
**MORSE BROS.**  
 SEC. 13, T12S, R5W, W.M.  
 BENTON COUNTY, ORE.

SCALE 1" = 400 FT.

BRGS BASED ON C.S. #132 & #309

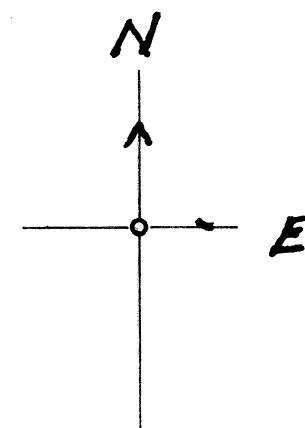
APR. 17, 1967

RIVER CHANNEL APPROX.

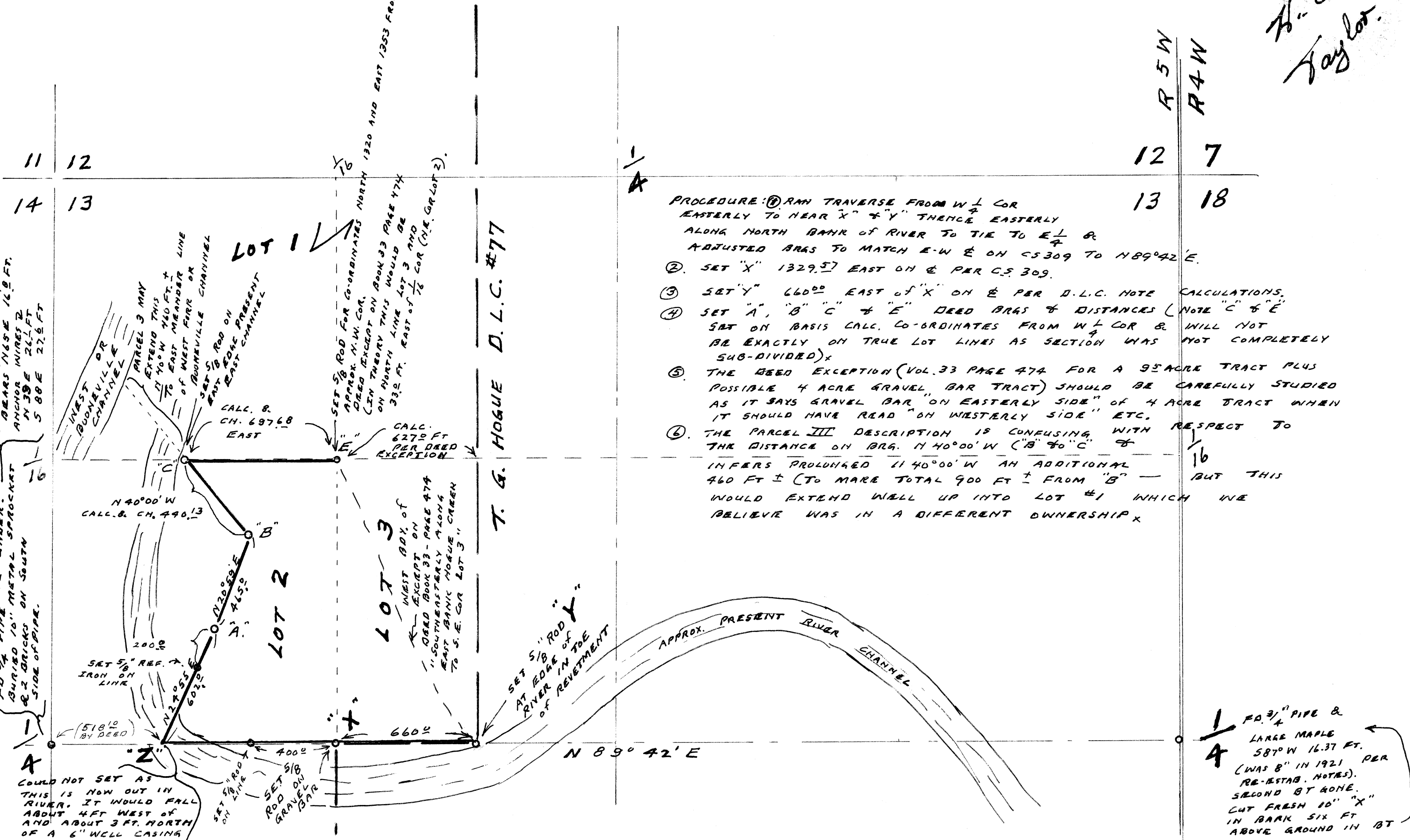
BERT W. LIDELL

by HOWARD E. TAYLOR.

REG. ENGRS.



H. E. Taylor.



PWA POLE #130467  
 BEARS 165° E 16.0 FT.  
 ANCHOR WIRES 2  
 N 39° E 21.1 FT  
 S 88° E 27.6 FT

FD 3/4" PIPE 12" LINER.  
 BURIED 10" METAL SPROCKET  
 & 2 BRICKS ON SOUTH  
 SIDE OF PIPE.

1/4" 3/4" PIPE &  
 LARGE MAPLE  
 S 87° W 16.37 FT.  
 (WAS "B" IN 1921 PER  
 RE-ESTAB. NOTES).  
 SECOND BT GONE.  
 CUT FRESH 10" "X"  
 IN BANK SIX FT  
 ABOVE GROUND IN BT