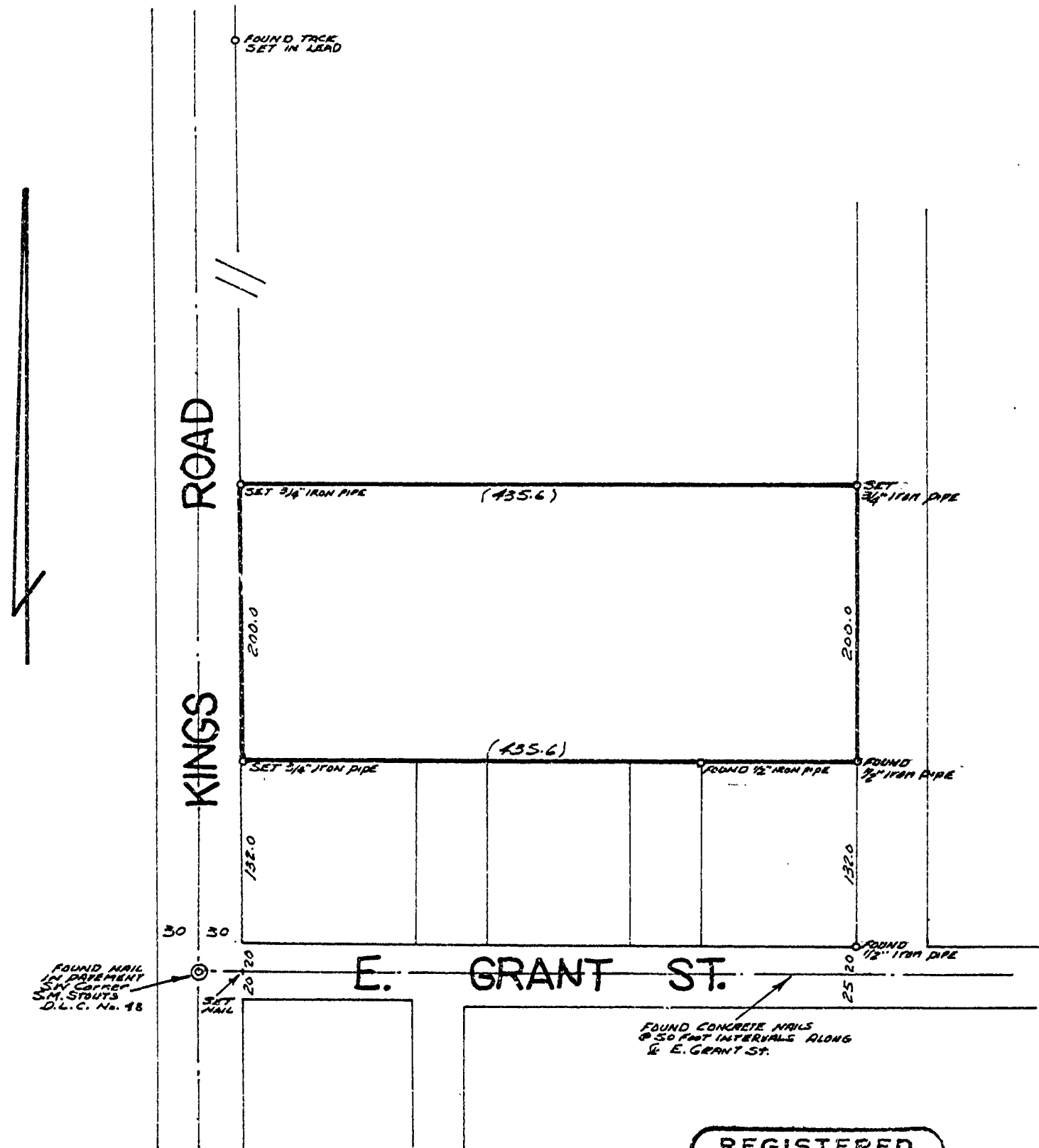


CS 4406

SURVEY for  
METRO INVESTMENT CORPORATION  
1115 Commercial Street, N.E.  
Salem, Oregon, in  
City of Corvallis, Benton County, Oregon

June 12, 1967

Scale: 1" = 100'



REGISTERED  
OREGON  
LAND SURVEYOR

*John F. Gannon*

JULY 12, 1963  
JOHN F. GANNON  
607.