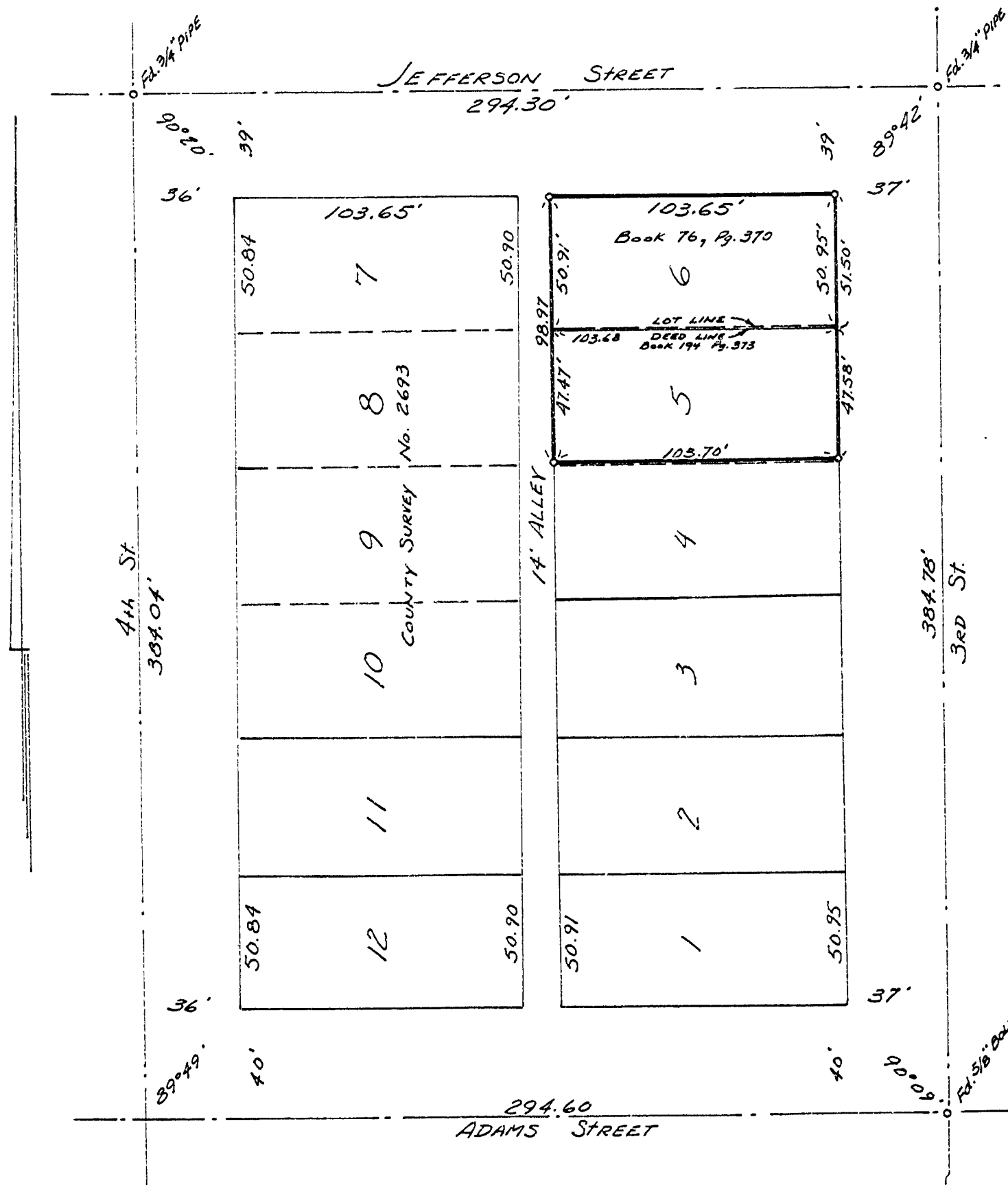


C. S. 4421

SURVEY for Corvallis Gazette-Times in  
Lots 5 and 6, Block 15, Original Towne of Lewisville,  
City of Corvallis, Benton County, Oregon

Scale: 1" = 50'

July 21, 1967



INFORMATION FROM C.S. No. 2693  
O SET CONCRETE NAILS

607  
JOHN F. GANNON  
JULY 12, 1967

John F. Gannon

REGISTERED  
LAND SURVEYOR  
OREGON