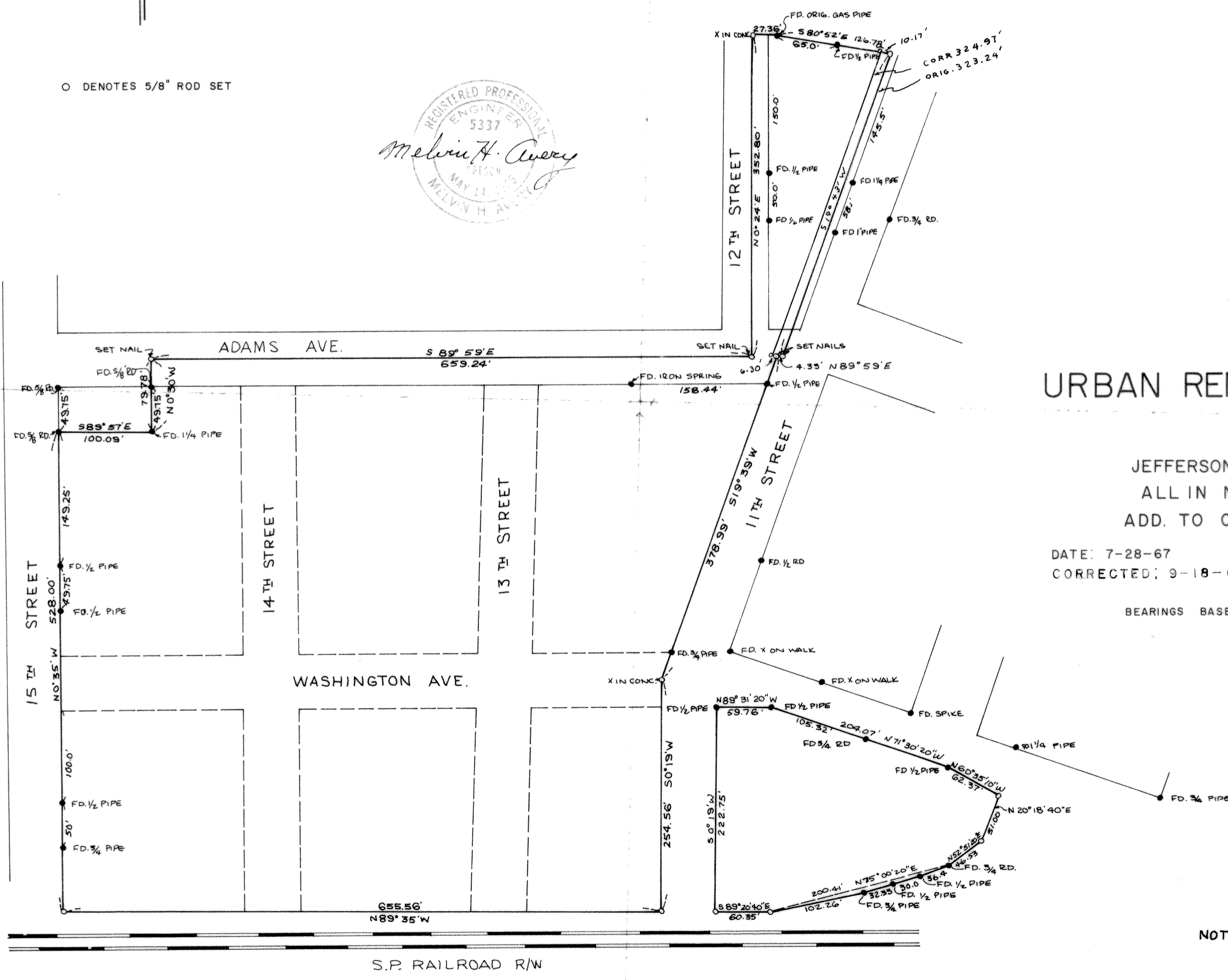
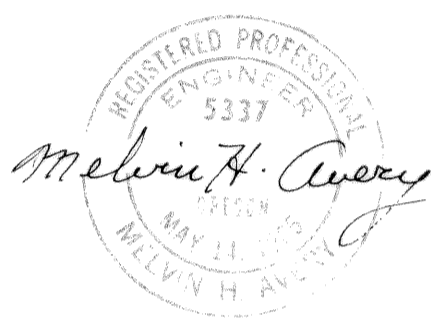


○ DENOTES 5/8" ROD SET



C.S. 4425-A
SEE ALSO C.S. 4425
SURVEY FOR

URBAN RENEWAL PROJECT R-12

JEFFERSON TO S.P.R.R., 15TH. TO 11TH.
ALL IN N.B. AVERY & P. AVERY'S
ADD. TO CITY OF CORVALLIS, ORE.

DATE: 7-28-67
CORRECTED: 9-18-67

SCALE: 1"=100'

BEARINGS BASED ON CITY PLAT

NOTE: THIS PHOTOCOPY WAS MADE FROM
A PAPER SEPIA FILED WITH C.S. 4425.
5-17-1984
D. INGRAM, BENTON CO. SUR.

4425-A