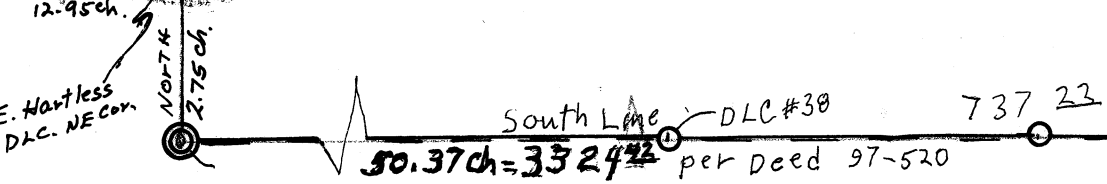
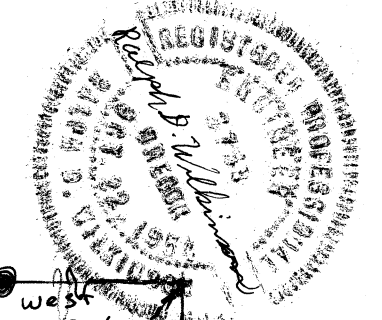


97-520

C. S. 4454

# MARVIN ELLIS

D.L.C. #51 T12S, R5W  
 SEPTEMBER 1967 SCALE 1"=200'  
 BERT W UDELL RPE #2301  
 By Ralph D. Wilkinson RPE #3759



set nail in Road  
 2x4" Fd Iron set by 11/6/67  
 1/2" Fd Iron

SEC or Abbey  
 DLC #51