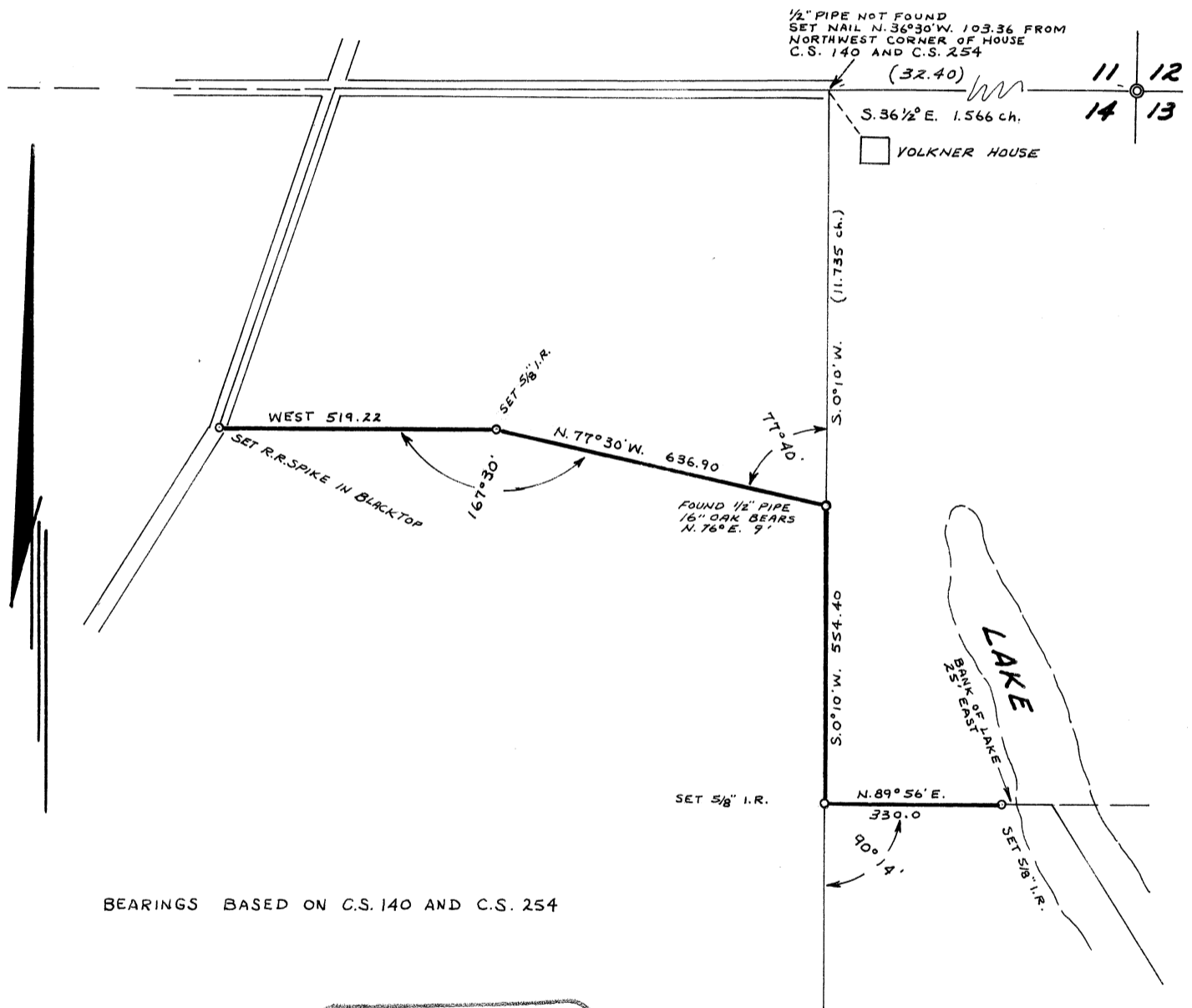


C. 5 4457

SURVEY for Minnie Volkner in
Section 14, Township 14 South, Range 5 West, Willamette
Meridian, Benton County, Oregon

Scale: 1" = 300'

October 11, 1967



REGISTERED
OREGON
LAND SURVEYOR

John F. Gannon

JULY 12, 1963
JOHN F. GANNON
607