

35

720.60 (10.913 ch = 720.26) to 0 on line N. of rod

N 89° 55' W

602.38 to points on line N. of rod and stone

701.86 to point on line N. of stone

Fd N.W. Bearing tree - measured
 S 2° E 0.87 ch = 57.4 from old blaze of
 oak 32" diameter and set 1/2" x 35" I. Pipe.
 Fd. Stone mkd 35 on E. face 25 N.W.
 Fd. 1/2" I. Rod S.E. O.S.
 Note: the oak was 24" Dia when originally
 blazed.

3

Fd. 3/4" I. Rod 0.85 South
 Fd Oak 26" (20") N 73° E 0.17 ch = 11.2
 Fd Oak 23" (14") N 76° W 0.727 ch = 48.0
 -distances measured are to the
 center of the trees.

Fd. stone 6" x 14" with x
 on top 5.90 South
 of line

Bearings from C.S. Records
 Hard Copy 11-4-2 Mkd. C.S. 333

C.S. 4521

Record of Survey
 for

E. L. JOHNSTON
 in the

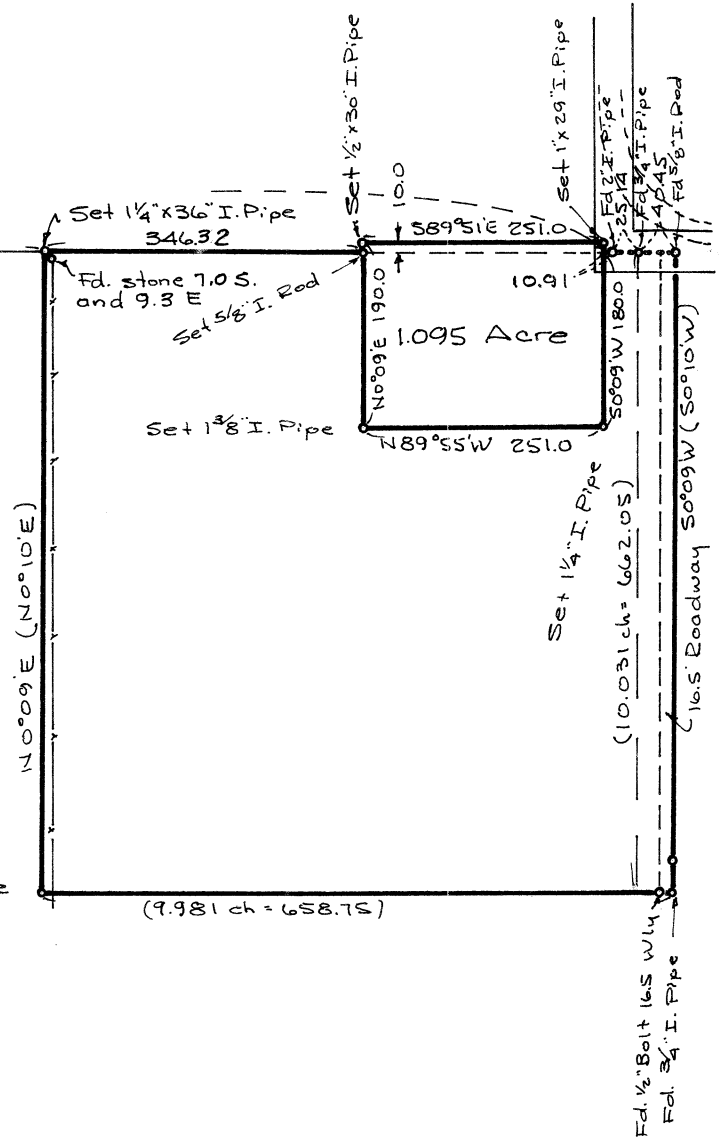
Northwest Quarter of Section 2
 T.11 S., R. 4 W. W.B.&M.

Benton County, Oregon

Scale: 1" = 200'

July 2, 1968

Parentheses indicate information
 from C.S. Records or deeds.



REGISTERED
OREGON
 LAND SURVEYOR
Verle C. Moore
 MAY 13, 1960
VERLE C. MOORE
 501