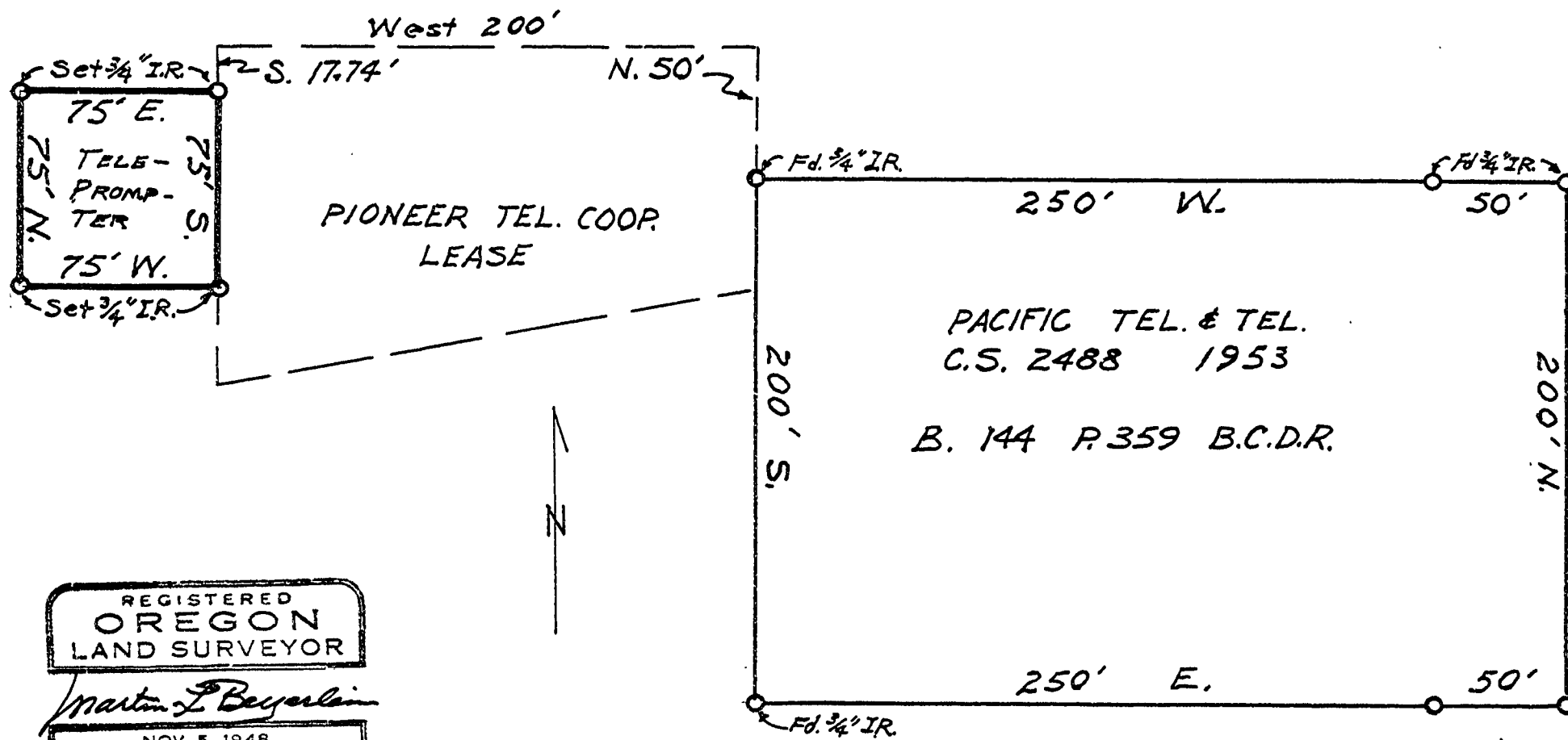


C.S. 4529

TELE PROMPTER CORPORATION

SEC. 20 T. 12S., R. 7W., W.M.
SCALE: 1" = 60' MAY 31, 1968



REGISTERED
OREGON
LAND SURVEYOR
Martin L. Beyerlein
NOV. 5, 1948
MARTIN L. BEYERLEIN
247

101.404 ch. (6692.66 ft)
N. 34° 06' 40" W.
C. & G.S. BEARING BASE

T. 12S., R. 7W.	29	28
W.M.	32	33