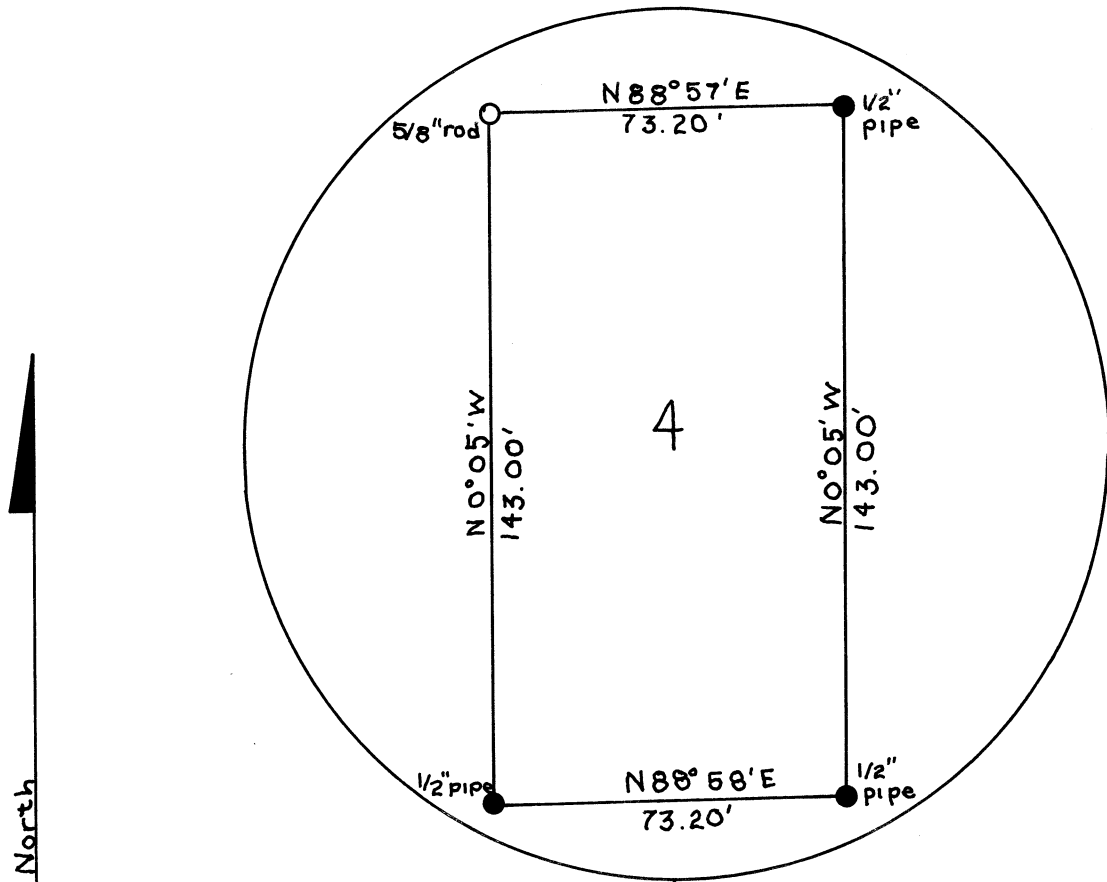


C.S. 4547

SURVEY: For Orville E. Parker

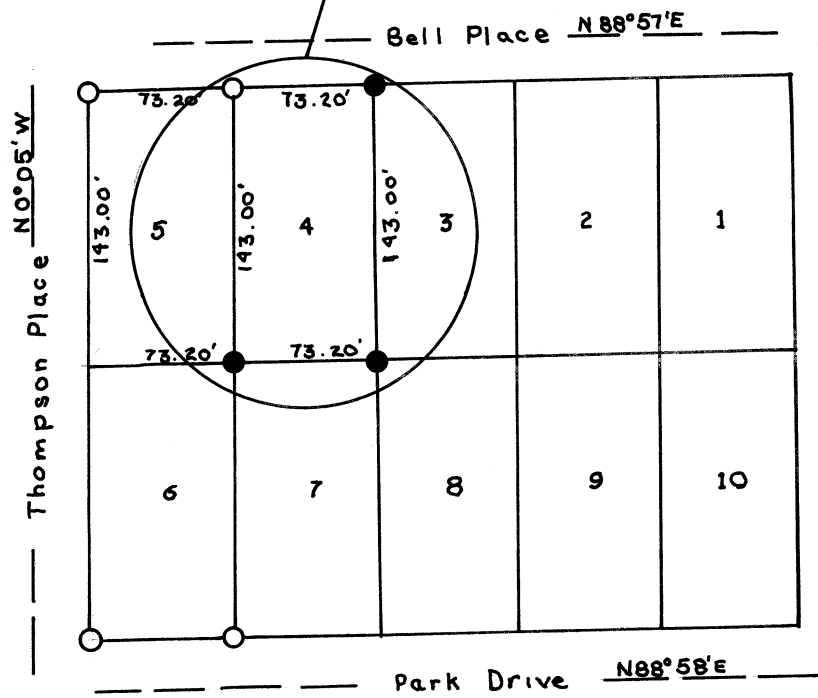
Lot 4 of Block 4, Pigsley Tract,
Section 11, T12S, R5W, W.M.
Benton County, Oregon

June 20, 1968



North

Scale: 1" = 40'
○ Found Corner
● Set Corner



REGISTERED
OREGON
LAND SURVEYOR

Tom O. McCullough

JULY 10, 1964
TOM O. McCULLOUGH
650

Scale: 1" = 100'

From evidence found on lots 4, 5, 6, 6, the NE, SE, and SW lots corner were reestablished.

Bearings based on survey by Donald R. Short dated August 12, 1968.