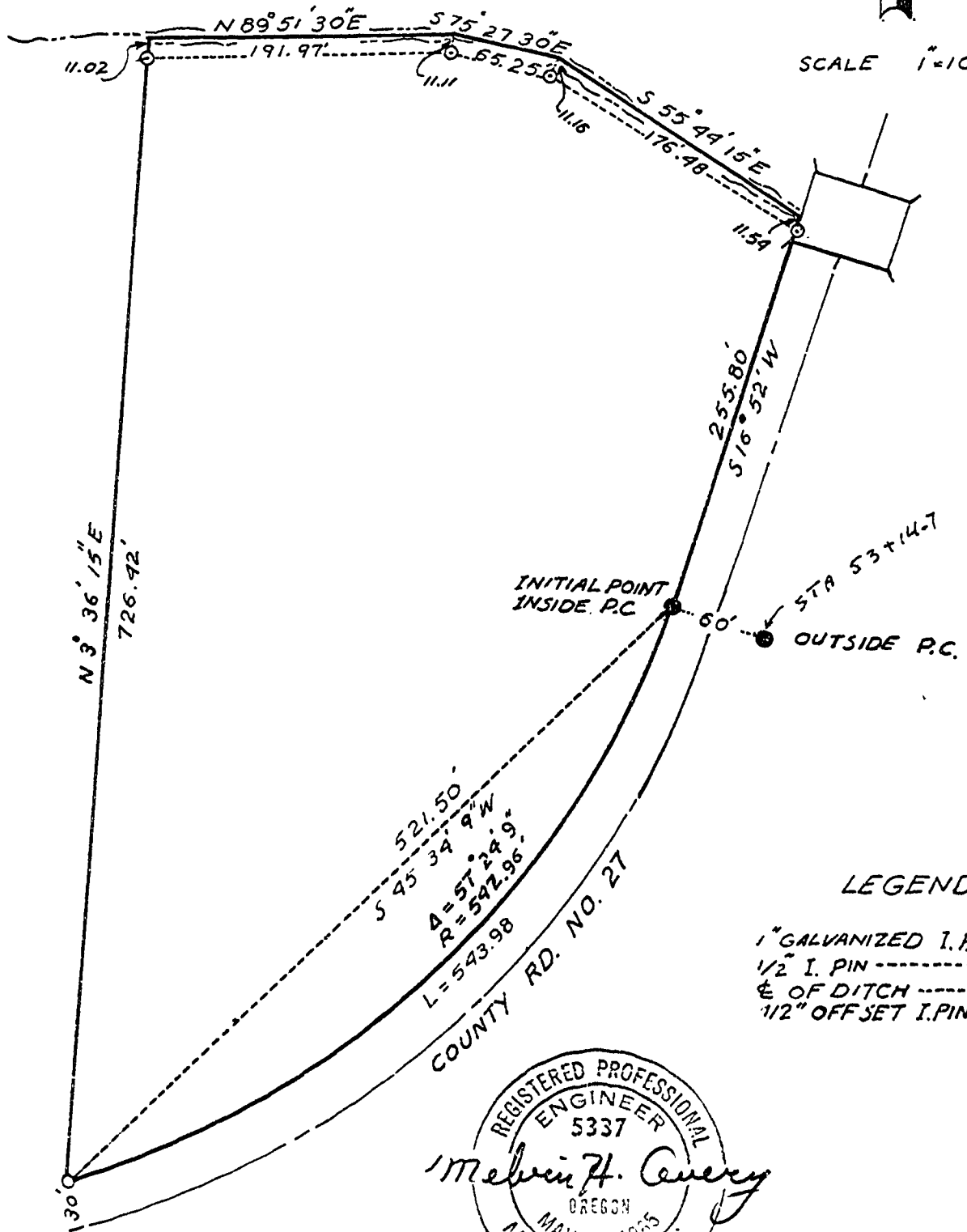


4626

S.K. BROWN D.L.C. #54,
T. 12 S., 1 R. 5 W., W.M.
BENTON COUNTY, OREGON
SURVEYED FOR: ROBERT J. LARSEN
OCTOBER 31, 1968



SCALE 1"=100'



LEGEND

- 1" GALVANIZED I.P. FD. ---●
- 1/2" I. PIN ---○
- 1/2" OFF SET I. PIN ---◉

REGISTERED PROFESSIONAL
ENGINEER
5337
Melvin H. Avery
OREGON
MAY 14, 1955
MELVIN H. AV. R.

NICHOLAS OWNBY D.L.C. 62