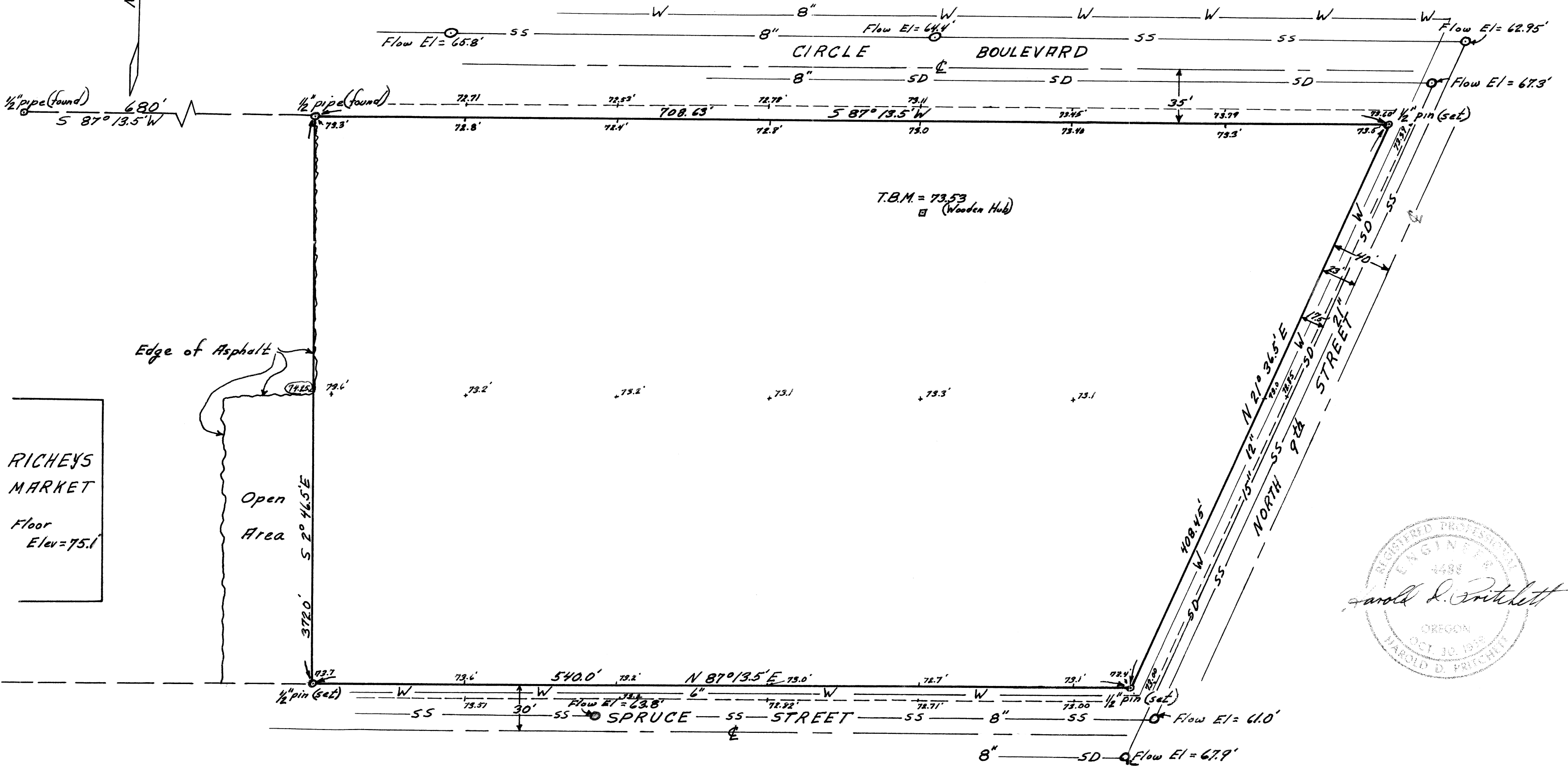
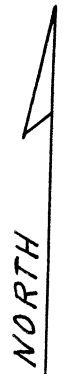


4650

Robert C. Wilson

Lots 1, 2, 3, 4, 5, 6, 7, 8, 9, 23 and 24, except the North 10 feet of said lots 6, 7, 8 and 9, all in Block 1, Highland Lawn Acres, Benton County Oregon

Note: Pipe sizes, location and flow elevations furnished by Corvallis City Engineering staff 10-6-68



Scale 1" = 60'

Sanitary Sewer — SS — SS —

Storm Sewer — SD — SD —

Water — W — W —

Curb — - - - - -