

4850

Record of Survey
for
WILLARD BODTKER & FRANCIS KAISER

in the
Northeast Quarter of Section 28 and the Northwest Quarter of Section 27
T. 10S., R. 4W. W.B.&M.
Benton County, Oregon

Scale: 1" = 200'

October 28, 1969

o INDICATES SET 5/8" x 30' I. ROD
UNLESS OTHERWISE NOTED.

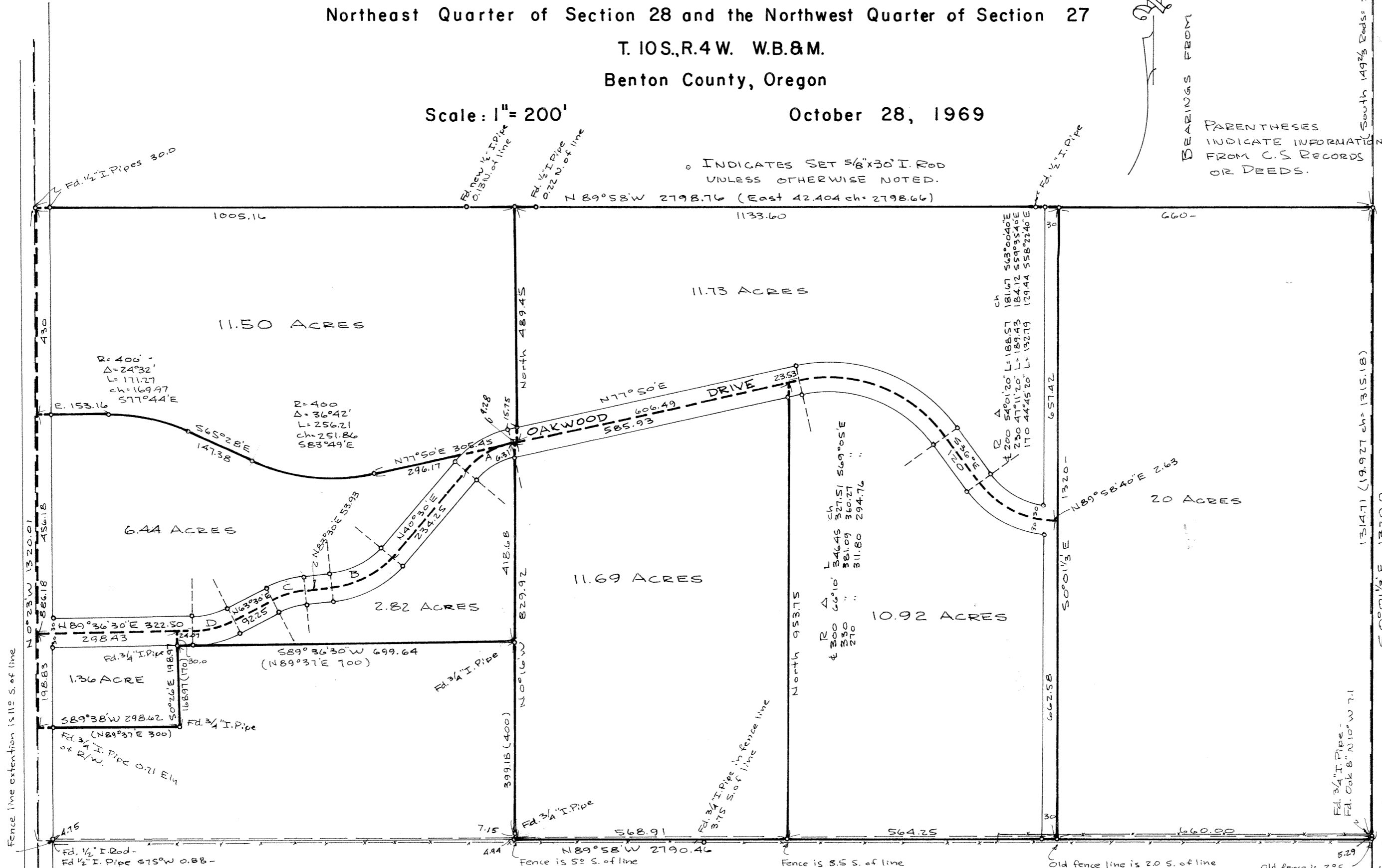
BEARINGS FROM C.S. RECORDS

PARENTHESES INDICATE INFORMATION FROM C.S. RECORDS OR DEEDS.

N.W. CORNER
JOHN J. HASKINS
D.L.C. 71

S.W. CORNER
WILLIAM HARRISON
JOHNSON D.L.C. 71

N.W. CORNER
WILLIAM HARRISON
JOHNSON D.L.C. 63



Curve	R	T	A	L	ch	Bearing
A	173.72	58.69	37° 20'	113.19	111.20	N 59° 10' E
	143.72	"	"	93.65	92.00	"
	203.72	"	"	132.74	130.41	"
B	200-	78.78	43° 00'	150.09	146.60	N 62° 00' E
	230-	"	"	172.61	168.59	"
	170-	"	"	127.58	124.61	"
C	200-	35.27	20° 00'	69.81	69.46	N 73° 30' E
	230-	"	"	80.29	79.88	"
	170-	"	"	59.34	59.04	"
D	200-	46.37	26° 06' 30"	91.11	90.35	N 76° 33' 15" E
	230-	"	"	104.77	103.90	"
	170-	"	"	77.44	76.80	"

REGISTERED
OREGON
LAND SURVEYOR
Verle C. Moore
MAY 18, 1960
VERLE C. MOORE
501

S.E. CORNER
LEWIS MORRIS
D.L.C. 70