

C.S. # 488

See notes in file

F.B. 17-77

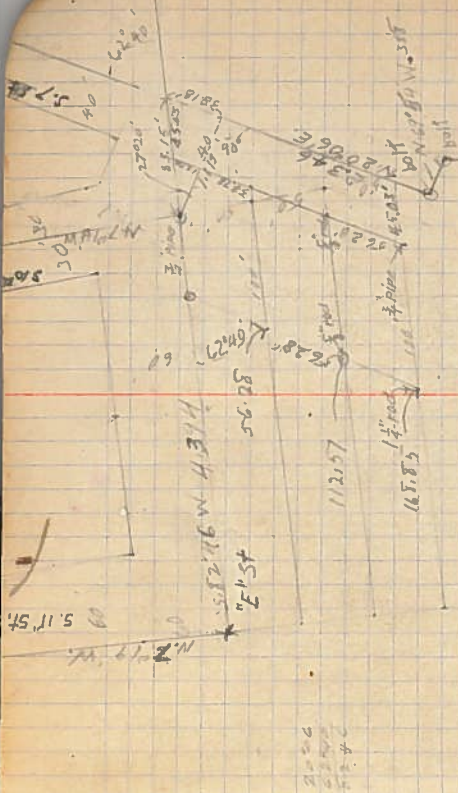
Book #17

MENING
BANSIT BOOK
363

17

Miscellaneous. G.W. Avery 12-5
1914 - 11 West 510th & 57th Sts. City.

#488



11257 4.699970 05
 11258 4.858889 06
 11259 1.750386 5625
 11260 9.111970
 11261 1.051416 11257
 11262 1.160206 40
 11263 9.928554
 11264 11.053476 4523
 11265 1.00
 11266 145.03
 11267
 11268
 11269
 11270
 11271
 11272
 11273
 11274
 11275
 11276
 11277
 11278
 11279
 11280
 11281
 11282
 11283
 11284
 11285
 11286
 11287
 11288
 11289
 11290
 11291
 11292
 11293
 11294
 11295
 11296
 11297
 11298
 11299
 11300

Description, G.W. Avery, Fein 30100
 Beginning at 1/2 pipe which is 33876 Ch. N. and
 2550 6.179 E. of the NW cor. of J.C. & M. W. 2000 lot
 446 No. 46 7123 R. 57 N. M. Block 6. N. B. Avery 2nd 1/2
 S. 12 1/2 W. 100' 1/2 N 20 06 E. 52.25' 1/2 N 72 06 E.
 100' 1/2 S 20 16 W. 56.25' 1/2 = 5000 sq. ft. 1000
 All in Benton County Oregon.

31090